

NEW TRACK AND  
FIELD CONSTRUCTION.  
SEE DWG. C102

VIT Junior Senior  
High School

VIT Elementary School

US Hwy 136

**HIGH SCHOOL LAB / SCIENCE  
OVERALL SITE PLAN**  
SCALE: 1" = 50'-0"



**ARCHITECHNICS**  
architects • engineers • interior designers  
5110 Main Street, Quincy, IL 62301 • 617-822-0554 • info@architechnics.com

CURRENT DATE: 8/25/2021



LICENSE EXPIRES: 11/30/22

NEW TRACK AND FIELD IMPROVEMENTS FOR:  
**VIT COMMUNITY UNIT  
SCHOOL DISTRICT #2**  
1502 EAST U.S. HIGHWAY 136, TABLE GROVE, ILLINOIS

CONSTRUCTION  
DOCUMENT  
PHASE

FOR  
CONSTRUCTION

ISSUE DATE: 8/25/2021

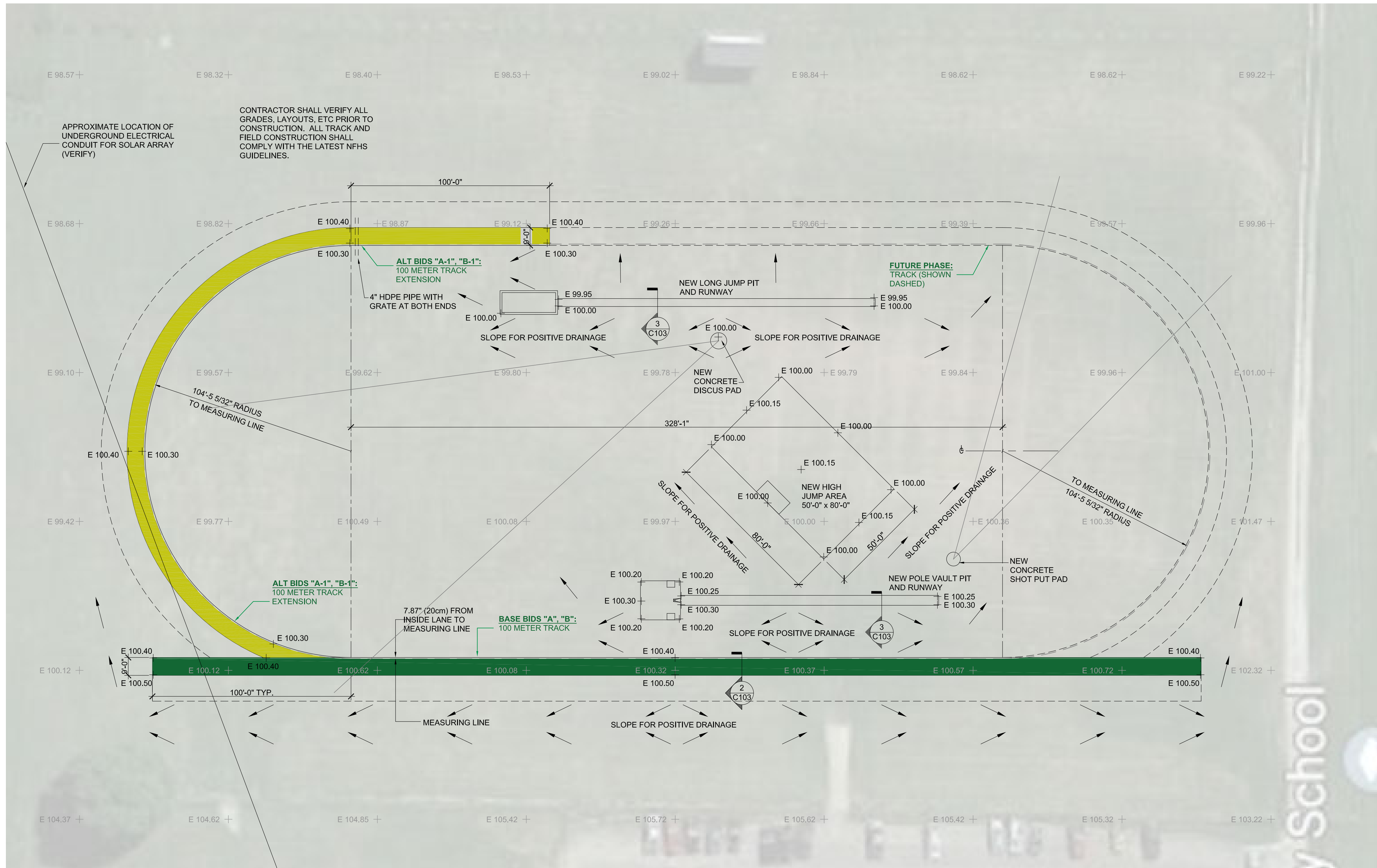
REVISIONS	

PROJECT NUMBER: 6159

**OVERALL  
SITE PLAN**

DWG. NO.  
**C101**

© ARCHITECHNICS, INC.

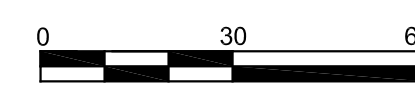


APPROXIMATE LOCATION OF UNDERGROUND ELECTRICAL CONDUIT FOR SOLAR ARRAY (VERIFY)

CONTRACTOR SHALL VERIFY ALL GRADES, LAYOUTS, ETC PRIOR TO CONSTRUCTION. ALL TRACK AND FIELD CONSTRUCTION SHALL COMPLY WITH THE LATEST NFHS GUIDELINES.

**ENLARGED SITE PLAN**

SCALE: 1" = 30'-0"



**SITE PLAN NOTES**

- 1] PROVIDE POSITIVE DRAINAGE AT ALL TIMES WITHIN THE CONSTRUCTION AREA. DO NOT ALLOW WATER TO POND ON PROPERTY.
- 2] RE-SEED ALL DISTURBED AREAS
- 3] ALL OTHER FIELD EVENT CONSTRUCTION TO BE INCLUDED IN BASE BIDS 'A', 'B'

CURRENT DATE: 8/25/2021



LICENSE EXPIRES: 11/30/22

NEW TRACK AND FIELD IMPROVEMENTS FOR:  
**VIT COMMUNITY UNIT**  
**SCHOOL DISTRICT #2**  
 1502 EAST U.S. HIGHWAY 136, TABLE GROVE, ILLINOIS

CONSTRUCTION DOCUMENT PHASE

FOR CONSTRUCTION

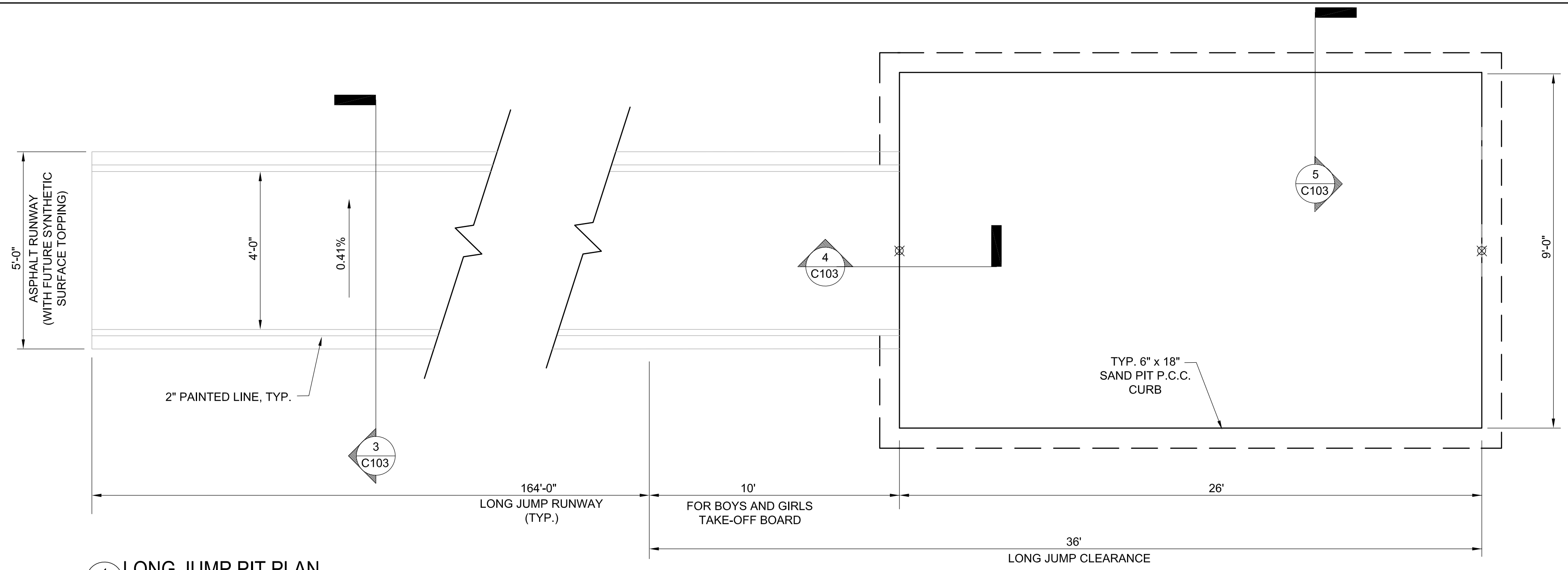
ISSUE DATE: 8/25/2021

REVISIONS	

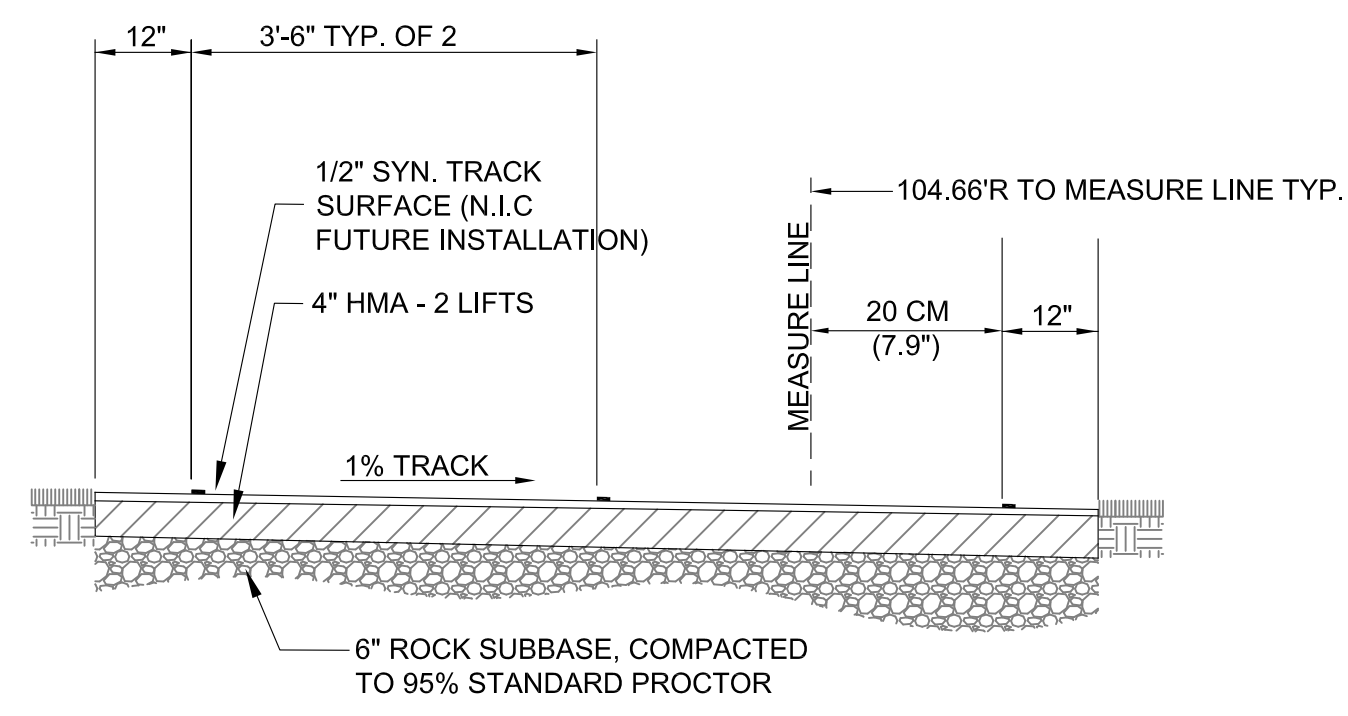
PROJECT NUMBER: 6159

**ENLARGED SITE PLAN**

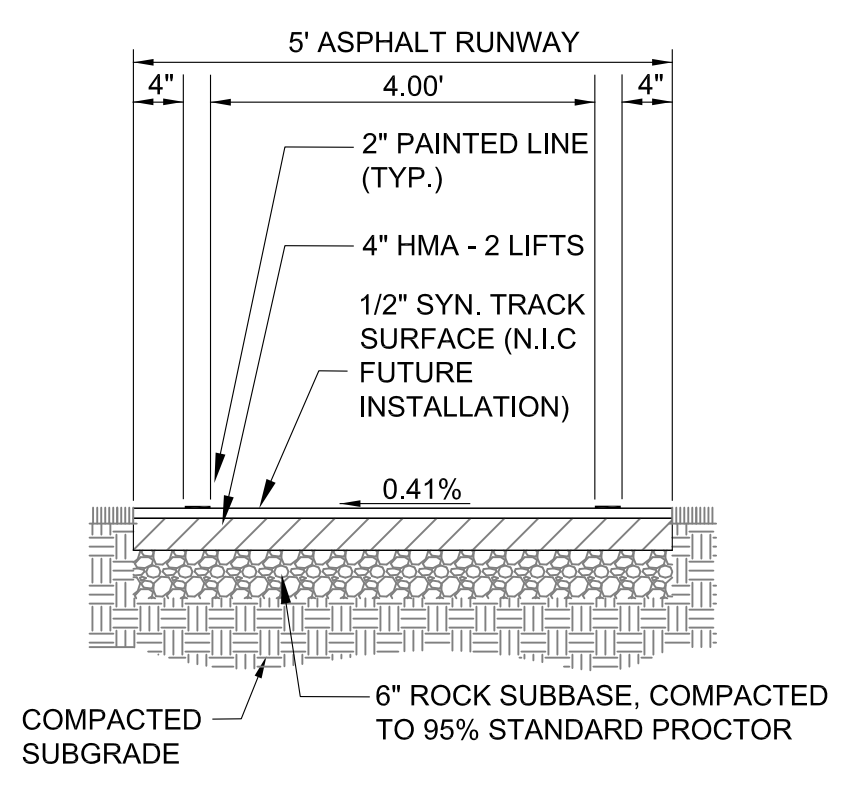
DWG. NO. **C102**



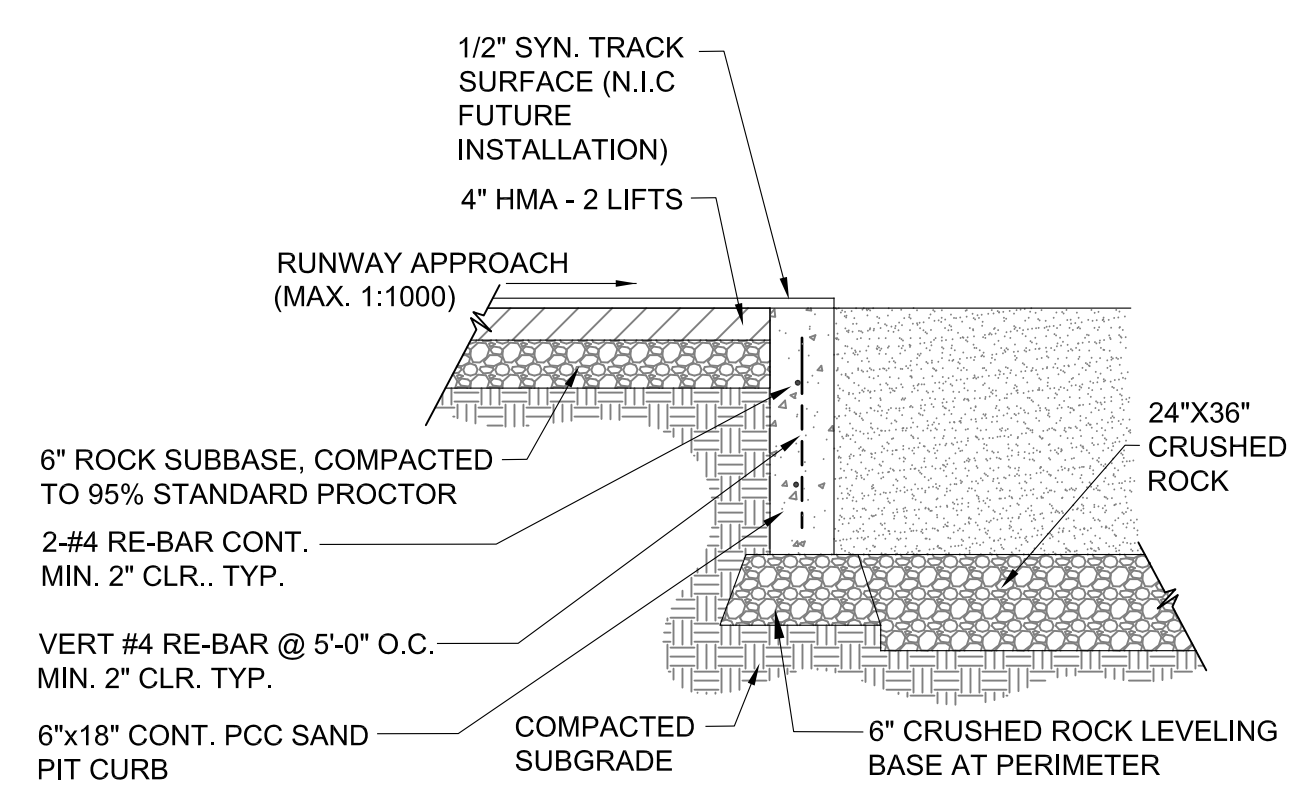
1 LONG JUMP PIT PLAN  
C103 SCALE: N.T.S.



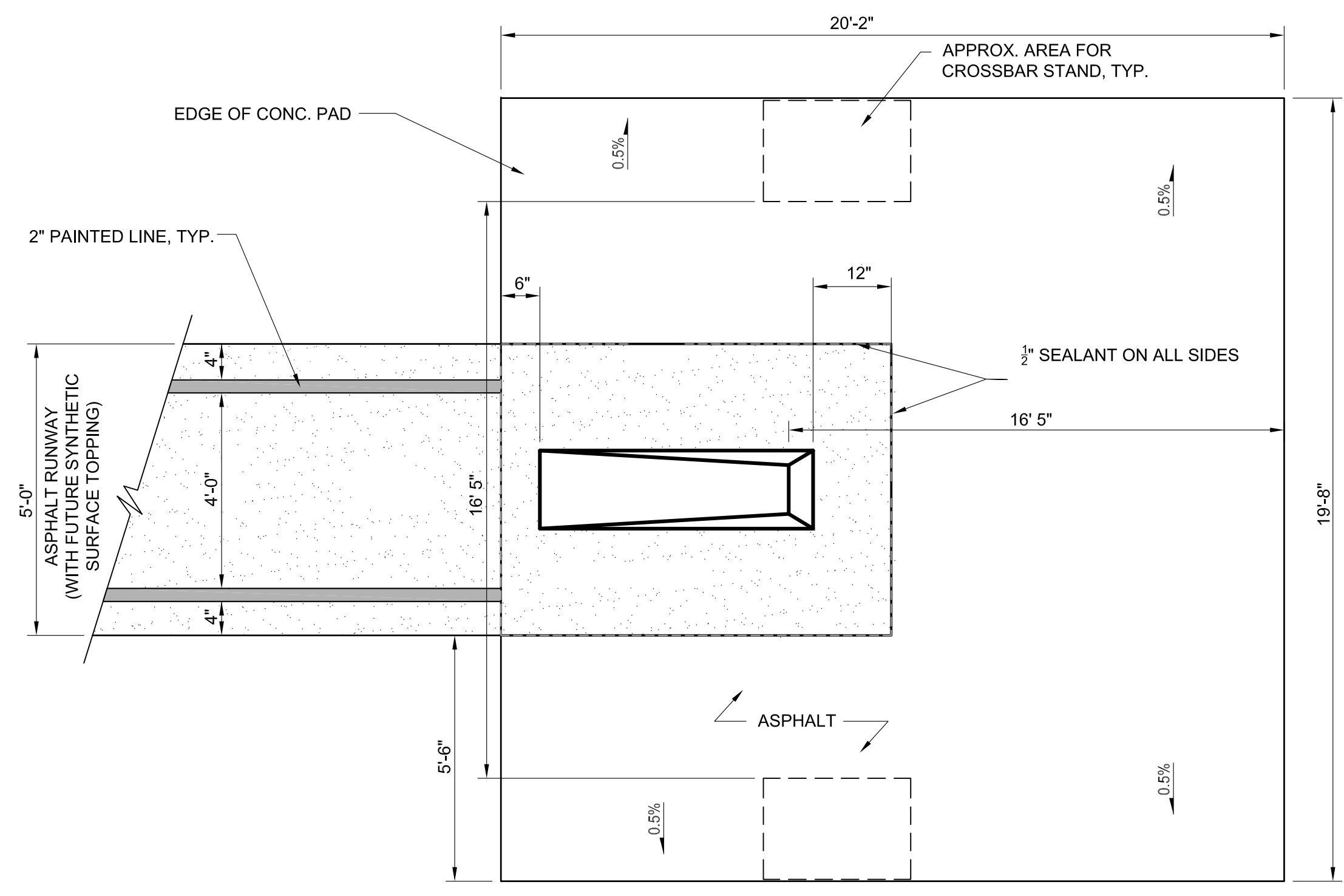
2 CROSS SECTION OF TRACK  
C103 SCALE: N.T.S.



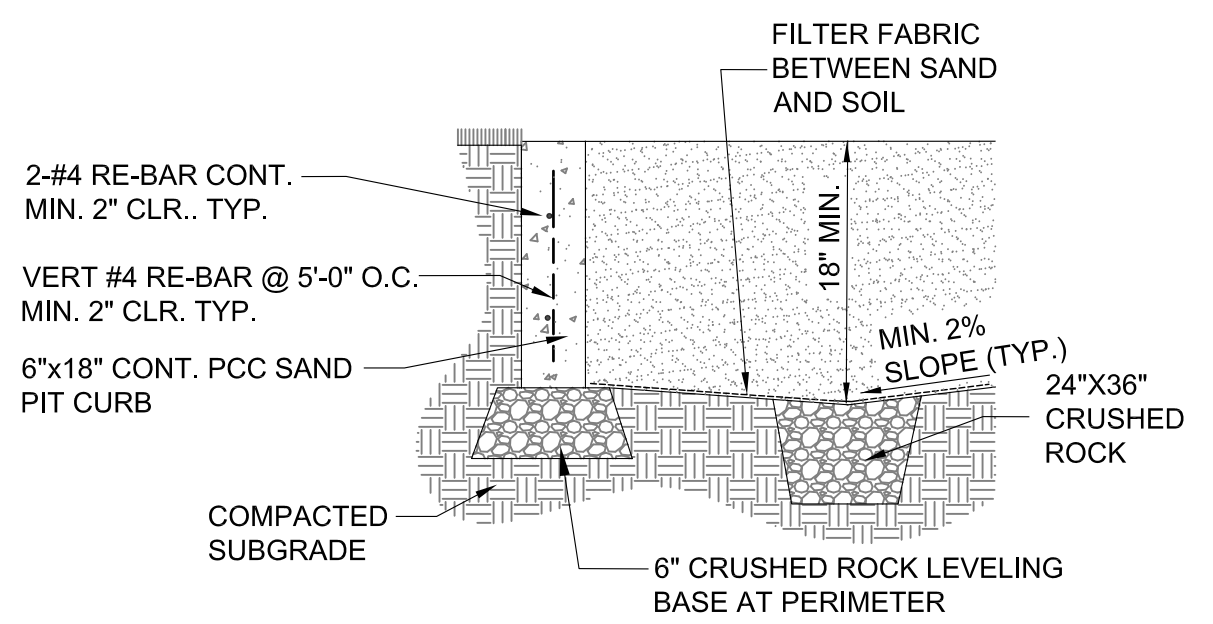
3 LONG/TRIPLE JUMP / POLE VAULT RUNWAY SECTION  
C103 SCALE: N.T.S.



4 RUNWAY APPROACH AT JUMP PIT SECTION  
C103 SCALE: N.T.S.



6 POLE VAULT PAD  
C103 SCALE: N.T.S.



5 JUMP PIT PERIMETER SECTION  
C103 SCALE: N.T.S.



NEW TRACK AND FIELD IMPROVEMENTS FOR:  
**VIT COMMUNITY UNIT**  
**SCHOOL DISTRICT #2**  
1502 EAST U.S. HIGHWAY 136, TABLE GROVE, ILLINOIS

CONSTRUCTION DOCUMENT PHASE

FOR CONSTRUCTION

ISSUE DATE: 8/25/2021

NO.	REVISIONS

PROJECT NUMBER: 6159

SITE DETAILS

DWG. NO. **C103**