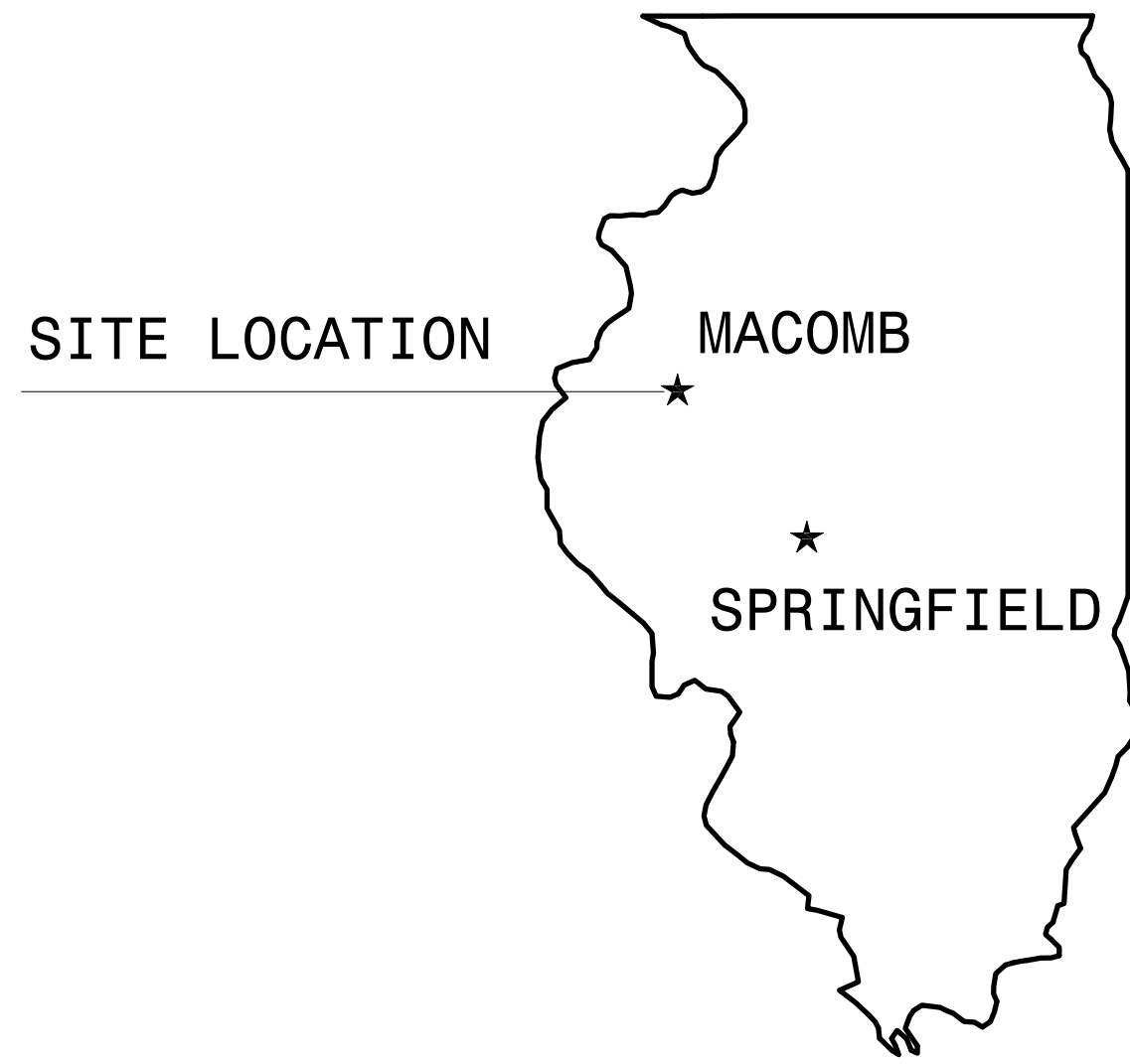


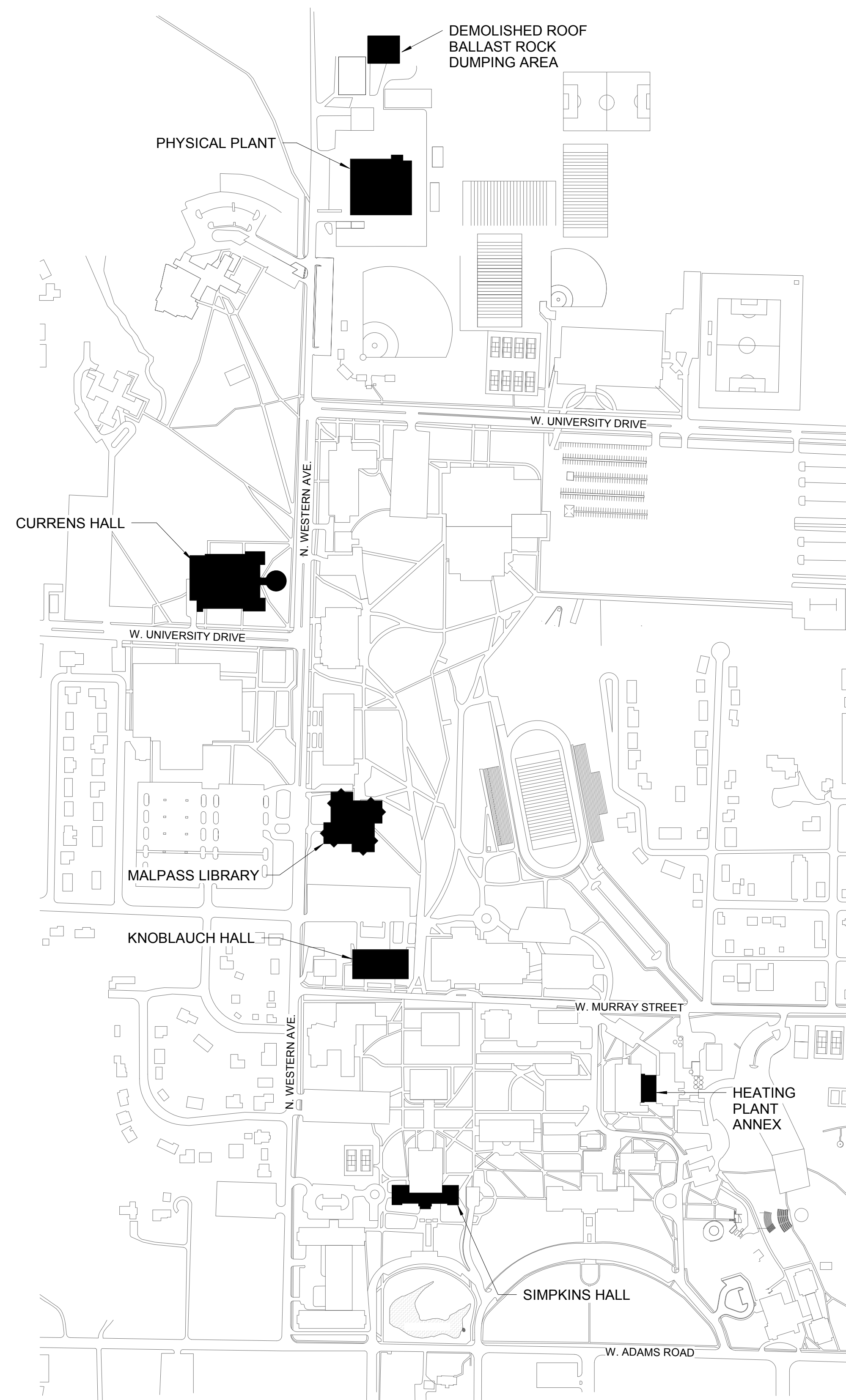
REPAIR AND REPLACE ROOFS
ILLINOIS BOARD OF HIGHER EDUCATION
WESTERN ILLINOIS UNIVERSITY
MACOMB, McDONOUGH COUNTY ILLINOIS
CDB BUILDING INVENTORY NO.
CURRENS HALL #T4005
HEATING PLANT ANNEX #4019

USING AGENCY:
WESTERN ILLINOIS UNIVERSITY - MACOMB

FUHRMANN ENGINEERING
2852 SOUTH 11TH STREET
SPRINGFIELD, IL 62703
(217) 529-5577



STATE LOCATION PLAN



CAMPUS MAP

DEMOLITION


D101	LOW ROOF DEMOLITION PLAN - CURRENS HALL
D102	UPPER ROOF DEMOLITION PLAN - CURRENS HALL
D103	ROOF DEMOLITION PLAN - HEATING PLANT ANNEX

A101 LOW ROOF PLAN - CURRENS HALL
A102 UPPER ROOF PLAN - CURRENS HALL
A103 ROOF PLAN - HEATING PLANT ANNEX
A501 ROOFING DETAILS
A502 ROOFING DETAILS

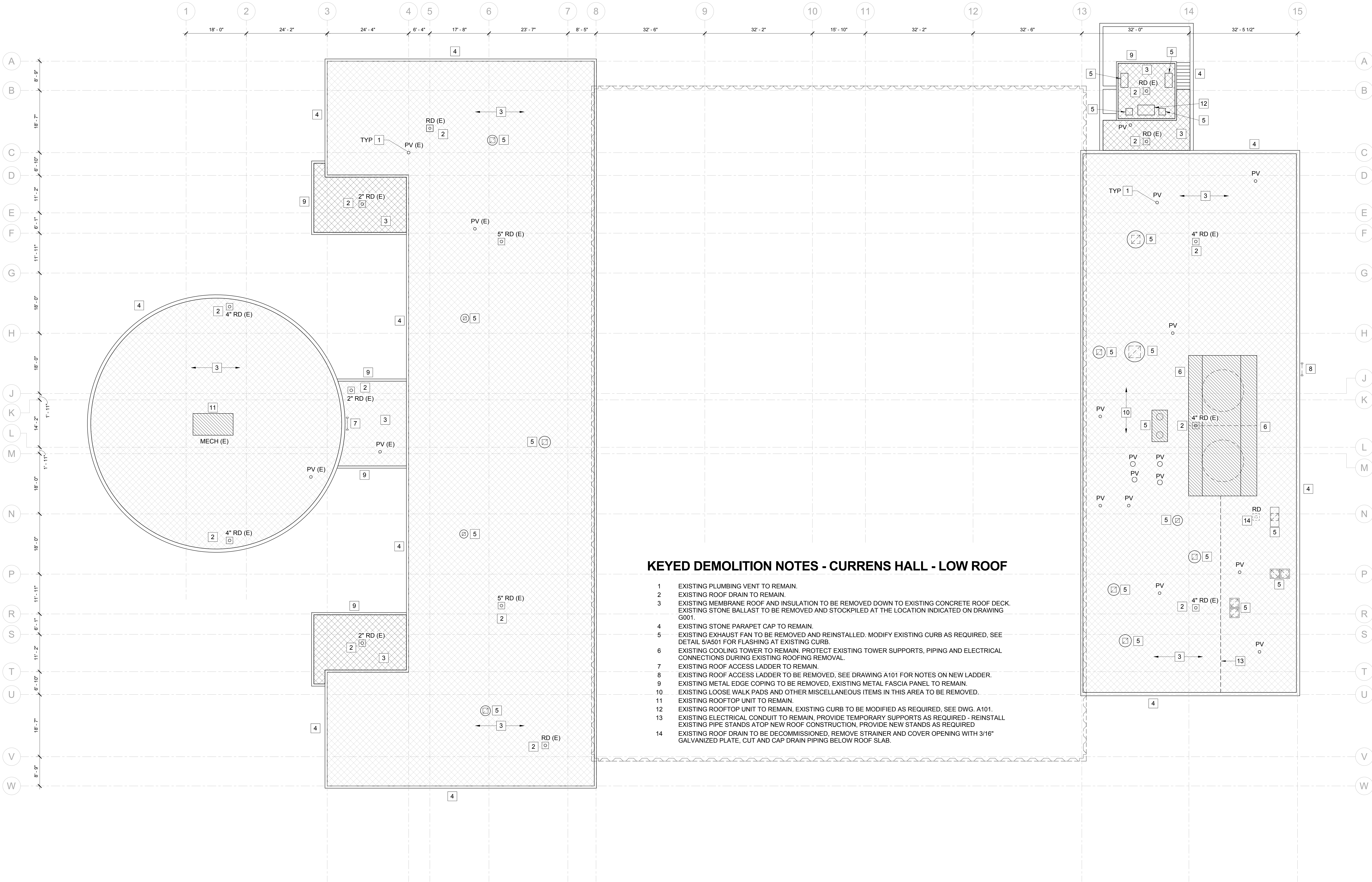
1 CONTRACTOR TO VERIFY ALL DIMENSIONS.
2 ANY DISCREPANCIES BETWEEN STATED AND EXISTING CONDITIONS SHALL BE REPORTED
3 IMMEDIATELY TO THE ARCHITECT.
4 DISCREPANCIES OR CONFLICTS BETWEEN SPECIFICATIONS AND DRAWINGS SHALL BE MADE
5 KNOWN TO THE ARCHITECT FOR CLARIFICATION.
6 THE CONTRACTOR SHALL BE RESPONSIBLE FOR PROTECTING THOSE AREAS TO REMAIN
7 UNOBTAINED DURING CONSTRUCTION.
8 THE CONTRACTOR SHALL TAKE NECESSARY PRECAUTIONS, AS PER THE WRITTEN
9 SPECIFICATIONS, TO MAINTAIN SAFETY AT THE CONSTRUCTION SITE, AND HE IS SOLELY
10 RESPONSIBLE FOR SAFETY MEASURES. THE CONTRACTOR IS ALSO SOLELY RESPONSIBLE FOR
11 THE CONSTRUCTION MEANS, METHODS, AND TECHNIQUES REGARDING EXECUTION OF THE
12 WORK.
13 THE CONTRACTOR SHALL CONFORM TO ALL LOCAL AND STATE CODES AND RECEIVE LOCAL
14 STATE APPROVAL FOR ALL WORK.
15 THE CONTRACTOR SHALL GIVE ALL NECESSARY NOTICES AND OBTAIN ALL PERMITS AND
16 PAY ALL LEGAL FEES. HE SHALL ALSO COMPLY WITH ALL CITY, COUNTY, AND STATE BUILDING
17 AND ORDINANCES REGARDING ALL WORK.
18 THE CONTRACTOR SHALL BE RESPONSIBLE FOR ANY DAMAGE DONE TO THE PREMISES OR
19 ADJACENT PREMISES, OR INJURIES TO THE PUBLIC DURING THE CONSTRUCTION OF THE
20 WORK, CAUSED BY HIMSELF, HIS SUBCONTRACTORS, OR THE CARELESSNESS OF ANY OF HIS
21 EMPLOYEES.
22 THE CONTRACTOR MUST UNDERSTAND THAT THE WORK IS ENTIRELY AT HIS RISK UNTIL SAME
23 IS ACCEPTED, AND HE WILL BE HELD RESPONSIBLE FOR ITS SAFETY.
24 THE CONTRACTOR SHALL MAINTAIN ALL NECESSARY TEMPORARY MEASURES
25 FOR THE PROTECTION OF THE WORK, INCLUDING BARRICADES, WARNING SIGNS, LIGHTS, ETC.

TITLE	PROJECT NO. 818-010-103
REPAIR AND REPLACE ROOFS - PHASE I ILLINOIS BOARD OF HIGHER EDUCATION WESTERN ILLINOIS UNIVERSITY MACOMB, McDONOUGH COUNTY	DATE 07/05/19 SHEET NO. G001 OF (9) SHEETS

NOTE: CONTRACTOR SHALL OBTAIN AND VERIFY ALL DIMENSIONS AND CONDITIONS AT JOB SITE AND BE FULLY RESPONSIBLE FOR SAME.

REVISIONS			DRAWN	PREPARED		ARCHITECT OF RECORD: ARCHITECTNICS 510 MAINE STREET, 10TH FLOOR QUINCY, IL 62301	CONSULTING ARCHITECT: EVANS CONSULTING SERVICES 10891 CONESTOGA DRIVE GLENARM, IL 62536	 <div style="text-align: center;"> <p>State of Illinois</p> <p>JB PRITZKER, GOVERNOR</p> <p>Illinois Capital Development Board</p> </div>	TITLE	PROJECT NO. 818-010-103
NO.	DATE	REMARKS	PTW							DATE 07/05/19
			TRACED	APPROVED						SHEET NO.
										G001
			CHECKED PTW	APPROVED		CONSULTING ENGINEER: FUHRMANN ENGINEERING 2852 SOUTH 11TH STREET SPRINGFIELD, IL 62703				OF (9) SHEETS

Wednesday, January 16, 2019 3:17:53 PM
P:\15797 - WIU Roofing Projects\00 - Documents\05 - CDB Documents\CDB Drawing Cover\00B Drawing Cover Sheet - WIU Roof.dwg

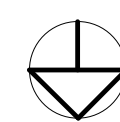


KEYED DEMOLITION NOTES - CURRENS HALL - LOW ROOF

- EXISTING PLUMBING VENT TO REMAIN.
- EXISTING ROOF DRAIN TO REMAIN.
- EXISTING MEMBRANE ROOF AND INSULATION TO BE REMOVED DOWN TO EXISTING CONCRETE ROOF DECK. EXISTING STONE BALLAST TO BE REMOVED AND STOCKPILED AT THE LOCATION INDICATED ON DRAWING G001.
- EXISTING STONE PARAPET CAP TO REMAIN.
- EXISTING EXHAUST FAN TO BE REMOVED AND REINSTALLED. MODIFY EXISTING CURB AS REQUIRED, SEE DETAIL 5/A501 FOR FLASHING AT EXISTING CURB.
- EXISTING COOLING TOWER TO REMAIN. PROTECT EXISTING TOWER SUPPORTS, PIPING AND ELECTRICAL CONNECTIONS DURING EXISTING ROOFING REMOVAL.
- EXISTING ROOF ACCESS LADDER TO REMAIN.
- EXISTING ROOF ACCESS LADDER TO BE REMOVED, SEE DRAWING A101 FOR NOTES ON NEW LADDER.
- EXISTING METAL EDGE COPING TO BE REMOVED, EXISTING METAL FASCIA PANEL TO REMAIN.
- EXISTING LOOSE WALK PADS AND OTHER MISCELLANEOUS ITEMS IN THIS AREA TO BE REMOVED.
- EXISTING ROOFTOP UNIT TO REMAIN.
- EXISTING ROOFTOP UNIT TO REMAIN, EXISTING CURB TO BE MODIFIED AS REQUIRED, SEE DWG. A101.
- EXISTING ELECTRICAL CONDUIT TO REMAIN, PROVIDE TEMPORARY SUPPORTS AS REQUIRED - REINSTALL EXISTING PIPE STANDS ATOP NEW ROOF CONSTRUCTION, PROVIDE NEW STANDS AS REQUIRED
- EXISTING ROOF DRAIN TO BE DECOMMISSIONED. REMOVE STRAINER AND COVER OPENING WITH 3/16" GALVANIZED PLATE, CUT AND CAP DRAIN PIPING BELOW ROOF SLAB.

1 LOW ROOF PLAN - DEMOLITION - CURRENS HALL

SCALE: 3/32" = 1'-0"



NOTE: CONTRACTOR SHALL OBTAIN AND VERIFY ALL DIMENSIONS AND CONDITIONS AT JOB SITE AND BE FULLY RESPONSIBLE FOR SAME.

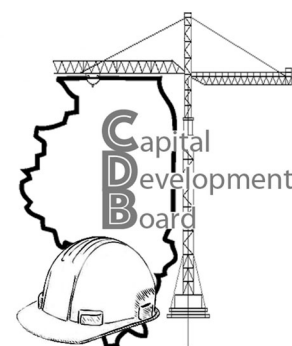
REVISIONS		
NO.	DATE	REMARKS

DRAWN	PTW
PREPARED	
TRACED	APPROVED
CHECKED	APPROVED
PTW	

ARCHITECT OF RECORD:
ARCHITECHNICS
510 MAINE STREET, 10TH FLOOR
QUINCY, IL 62301

CONSULTING ENGINEER:
FUHRMANN ENGINEERING
2852 SOUTH 11TH STREET
SPRINGFIELD, IL 62703

CONSULTING ARCHITECT:
EVANS CONSULTING SERVICES
10891 CONESTOGA DRIVE
GLENARM, IL 62536



State of Illinois
JB PRITZKER, GOVERNOR
Illinois Capital Development Board

LOW ROOF DEMOLITION PLAN - CURRENS HALL

REPAIR AND REPLACE ROOFS - PHASE I
ILLINOIS BOARD OF HIGHER EDUCATION
WESTERN ILLINOIS UNIVERSITY
MACOMB, McDONOUGH COUNTY

PROJECT NO.
818-010-103

DATE
07/05/19
SHEET NO.

D101
OF (9) SHEETS

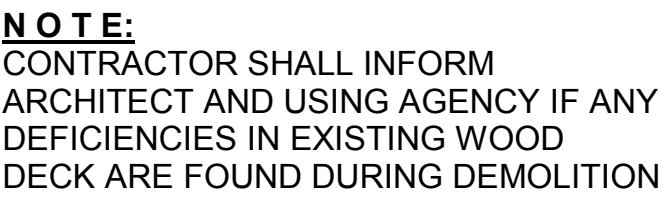
ISSUED FOR BIDDING

- 1 EXISTING ROOF DRAIN TO BE DECOMMISSIONED, REMOVE STRAINER AND COVER OPENING WITH 3/16 GALVANIZED
- 2 PLATE, CUT AND CAP DRAIN PIPING BELOW ROOF SLAB.
- 3 EXISTING ROOF DRAIN TO REMAIN.
- 4 EXISTING ROOF ACCESS SCUTTLE TO REMAIN.
- 5 EXISTING MECHANICAL EQUIPMENT TO BE REMOVED, SEE DRAWING A101 FOR DECK INFILL.
- 6 EXISTING MECHANICAL EQUIPMENT TO REMAIN. SEE DETAILS FOR NEW ELEVATED CURBS.
- 7 EXISTING STONE PARAPET CAP TO REMAIN.
- 8 EXISTING PLUMBING VENT TO REMAIN.
- 9 EXISTING EXHAUST FAN TO BE REMOVED AND REINSTALLED. MODIFY EXISTING CURB AS REQUIRED, SEE DETAIL
- 10 5/A501 FOR FLASHING AT EXISTING CURB
- 11 EXISTING WOOD DECK TO BE REMOVED IN ITS ENTIRETY.
- 12 EXISTING RAISED CURB TO REMAIN.
- 13 EXISTING MEMBRANE ROOF AND INSULATION TO BE REMOVED DOWN TO EXISTING CONCRETE ROOF DECK.
- 14 EXISTING STONE BALLAST TO BE REMOVED AND STOCKPILED AT THE LOCATION INDICATED ON DRAWING G001.
- 15 EXISTING ELECTRICAL SERVICE AND CONDUIT TO REMAIN, REMOVE AND REINSTALL AS REQUIRED
- 16 EXISTING ELECTRICAL CONDUIT TO REMAIN, PROVIDE TEMPORARY SUPPORTS AS REQUIRED - REINSTALL
- 17 EXISTING PIPE STANDS ATOP NEW ROOF CONSTRUCTION, PROVIDE NEW STANDS AS REQUIRED



NOTE: CONTRACTOR SHALL OBTAIN AND VERIFY ALL DIMENSIONS AND CONDITIONS AT JOB SITE AND BE FULLY RESPONSIBLE FOR SAME.

Wednesday, January 16, 2019 3:17:53 PM
P:\5797 - WTU Roofing Projects\00 - Documents\05 - CDB Documents\CDB Drawing Cover Sheet - WTU Roof.dwg



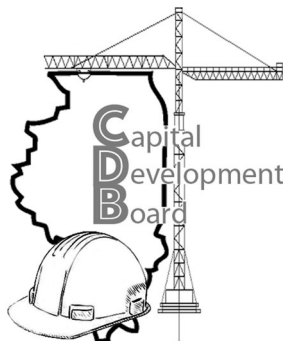
1. DEMOLITION AND REMOVAL OF ORIGINAL ROOF MEMBRANE, ROOF DECK INSULATION, AND ANY EXISTING UNDERLAYMENT IN-PLACE.
2. **THE PHASE OF SELECTIVE DEMOLITION SHALL BE CLOSELY COORDINATED WITH REQUIRED ASBESTOS ABATEMENT ACTIVITIES. SEE SPECIFICATION SECTION 02 26 25.**
3. PROVIDE PROTECTION OF CERTAIN ROOF MOUNTED ITEMS THAT ARE TO REMAIN IN PLACE, I.E., EXISTING ROOF HATCHES, MECHANICAL EQUIPMENT, ITEMS MOUNTED TO THE EXISTING BUILDING, CERTAIN GAS VENT PIPES, ETC.
4. CERTAIN ITEMS ARE TO BE REMOVED, REUSED AND REINSTALLED, I.E., ROOF LADDERS, PLUMBING VENTS, PLUMBING PIPING, EXHAUST FANS, EXHAUST HOODS, AIR-INTAKE HOODS, RELATED DUCT WORK, MECHANICAL DEVICES, AND ELECTRICAL POWER DEVICES, AS NOTED ON THE PROJECT DRAWINGS.
 - A) VERIFY WITH OWNER IF OTHER ITEMS TO BE DEMOLISHED AND REMOVED ARE TO BE SALVAGED AND / OR REUSED.
5. DEMOLITION ACTIVITIES SHALL BE PERFORMED TO MAINTAIN CONTINUOUS OPERATIONS OF THE EXISTING FACILITY. MINIMAL SHUT-DOWN TIME FOR EQUIPMENT IS REQUIRED.
6. DEMOLITION OF THE EXISTING ROOF SYSTEM NOT PROCEED UNTIL ALL TEMPORARY ROOFING AND THE INS ARE IN PLACE. THE QUANTITY OF ROOFING DEMOLITION SHALL BE COORDINATED BY THE ROOFING CONTRACTOR . AT NO TIME SHALL ANY PORTION OF THE EXISTING CONCRETE DECKING BE EXPOSED FOR MORE THAN ONE WORK DAY.

OF (9) SHEETS

- 1 EXISTING 12" SCUPPER OPENING THROUGH MASONRY WALL.
- 2 EXISTING ROOF DRAIN TO REMAIN.
- 3 EXISTING ROOF ACCESS SCUTTLE TO REMAIN.
- 4 EXISTING ROOF ACCESS LADDER TO REMAIN.
- 5 EXISTING MECHANICAL EQUIPMENT TO REMAIN. REMOVE AND REINSTALL EXISTING EQUIPMENT,
6 MODIFY DUCTWORK, ELECTRICAL CIRCUIT, ETC AND INSTALL ON NEW INSULATED CURB. SEE
7 PLAN FOR APPROXIMATE SIZE OF CURB AND DETAILS FOR ADDITIONAL INFORMATION.
- 8 EXISTING CHAINLINK FENCE, BRACKETS, VERTICALS ETC. TO BE REMOVED.
- 9 EXISTING MECHANICAL OPENINGS TO BE DEMOLISHED. REFER TO DETAILS FOR DECKING INFILL
10 REQUIREMENTS
- 11 EXISTING MEMBRANE, BUILT-UP ROOF LAYER, AND INSULATION TO BE REMOVED DOWN TO
12 EXISTING WOOD ROOF DECK
- 13 EXISTING PLUMBING VENT TO REMAIN.
- 14 EXISTING STONE PARAPET CAP TO REMAIN.
- 15 EXISTING LOOSE MASONRY ATOP ROOF MEMBRANE IN THIS AREA TO BE REMOVED.
- 16 EXISTING CABLE AND CONNECTIONS TO BE REMOVED.
- 17 EXISTING WIRE AND CONDUIT TO BE REMOVED.

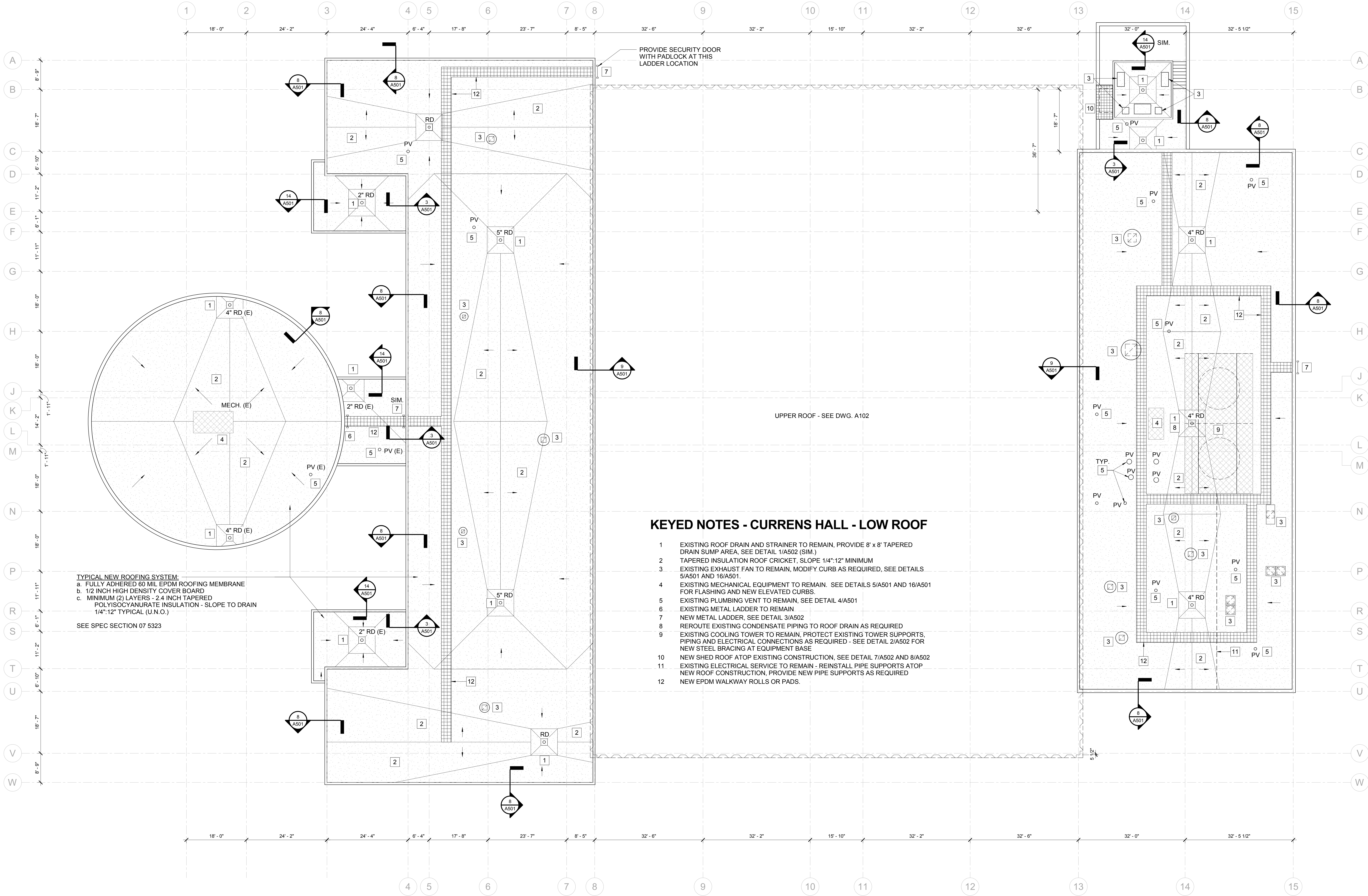
NOTE: CONTRACTOR SHALL OBTAIN AND VERIFY ALL DIMENSIONS AND CONDITIONS AT JOB SITE AND BE FULLY RESPONSIBLE FOR SAME.

REVISONS			DRAWN	PREPARED			
NO.	DATE	REMARKS	PTW			ARCHITECT OF RECORD: ARCHITECHNICS 510 MAINE STREET, 10TH FLOOR QUINCY, IL 62301	CONSULTING ARCHITECT: EVANS CONSULTING SERVICES 10891 CONESTOGA DRIVE GLENARM, IL 62536
			TRACED	APPROVED			
			CHECKED	APPROVED		CONSULTING ENGINEER: FUHRMANN ENGINEERING 2852 SOUTH 11TH STREET SPRINGFIELD, IL 62703	
			PTW				



State of Illinois
JB PRITZKER, GOVERNOR
Illinois Capital Development Board

Wednesday, January 16, 2019 3:17:53 PM
P:\15797 - WLU Roofing Projects\00 - Documents\05 - CDB Documents\CDB Drawing Cover\00B Drawing Cover Sheet - WLU Roof.dwg



KEYED NOTES - CURRENS HALL - LOW ROOF

- EXISTING ROOF DRAIN AND STRAINER TO REMAIN, PROVIDE 8' x 8' TAPERED DRAIN SUMP AREA, SEE DETAIL 1/A502 (SIM.)
- TAPERED INSULATION ROOF CRICKET, SLOPE 1/4":12" MINIMUM
- EXISTING EXHAUST FAN TO REMAIN, MODIFY CURB AS REQUIRED, SEE DETAILS 5/A501 AND 16/A501.
- EXISTING MECHANICAL EQUIPMENT TO REMAIN. SEE DETAILS 5/A501 AND 16/A501 FOR FLASHING AND NEW ELEVATED CURBS.
- EXISTING PLUMBING VENT TO REMAIN, SEE DETAIL 4/A501
- EXISTING METAL LADDER TO REMAIN
- NEW METAL LADDER, SEE DETAIL 3/A502
- REROUTE EXISTING CONDENSATE PIPING TO ROOF DRAIN AS REQUIRED
- EXISTING COOLING TOWER TO REMAIN, PROTECT EXISTING TOWER SUPPORTS, PIPING AND ELECTRICAL CONNECTIONS AS REQUIRED - SEE DETAIL 2/A502 FOR NEW STEEL BRACING AT EQUIPMENT BASE
- NEW SHED ROOF ATOP EXISTING CONSTRUCTION, SEE DETAIL 7/A502 AND 8/A502
- EXISTING ELECTRICAL SERVICE TO REMAIN - REINSTALL PIPE SUPPORTS ATOP NEW ROOF CONSTRUCTION, PROVIDE NEW PIPE SUPPORTS AS REQUIRED
- NEW EPDM WALKWAY ROLLS OR PADS.

TYPICAL NEW ROOFING SYSTEM:
a. FULLY ADHERED 60 MIL EPDM ROOFING MEMBRANE
b. 1/2 INCH HIGH DENSITY COVER BOARD
c. MINIMUM (2) LAYERS - 2.4 INCH TAPERED POLYISOCYANURATE INSULATION - SLOPE TO DRAIN 1/4":12" TYPICAL (U.N.O.)

SEE SPEC SECTION 07 5323

1 LOWER ROOF PLAN - CURRENS HALL

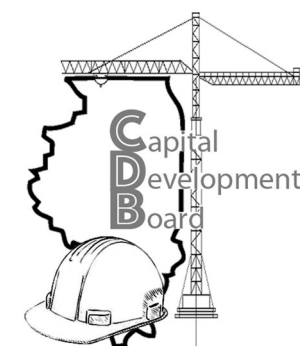
SCALE: 3/32" = 1'-0"

0 8' 16' 24'



NOTE: CONTRACTOR SHALL OBTAIN AND VERIFY ALL DIMENSIONS AND CONDITIONS AT JOB SITE AND BE FULLY RESPONSIBLE FOR SAME.

REVISIONS			DRAWN	PREPARED		ARCHITECT OF RECORD:	CONSULTING ARCHITECT:
NO.	DATE	REMARKS					
			PTW			ARCHITECTONICS 510 MAINE STREET, 10TH FLOOR QUINCY, IL 62301	EVANS CONSULTING SERVICES 10891 CONESTOGA DRIVE GLENARM, IL 62536
			TRACED	APPROVED			
			CHECKED	APPROVED		CONSULTING ENGINEER: FUHRMANN ENGINEERING 2852 SOUTH 11TH STREET SPRINGFIELD, IL 62703	
			PTW				



State of Illinois
JB PRITZKER, GOVERNOR
Illinois Capital Development Board

LOW ROOF PLAN - CURRENS HALL

REPAIR AND REPLACE ROOFS - PHASE I
ILLINOIS BOARD OF HIGHER EDUCATION
WESTERN ILLINOIS UNIVERSITY
MACOMB, McDONOUGH COUNTY

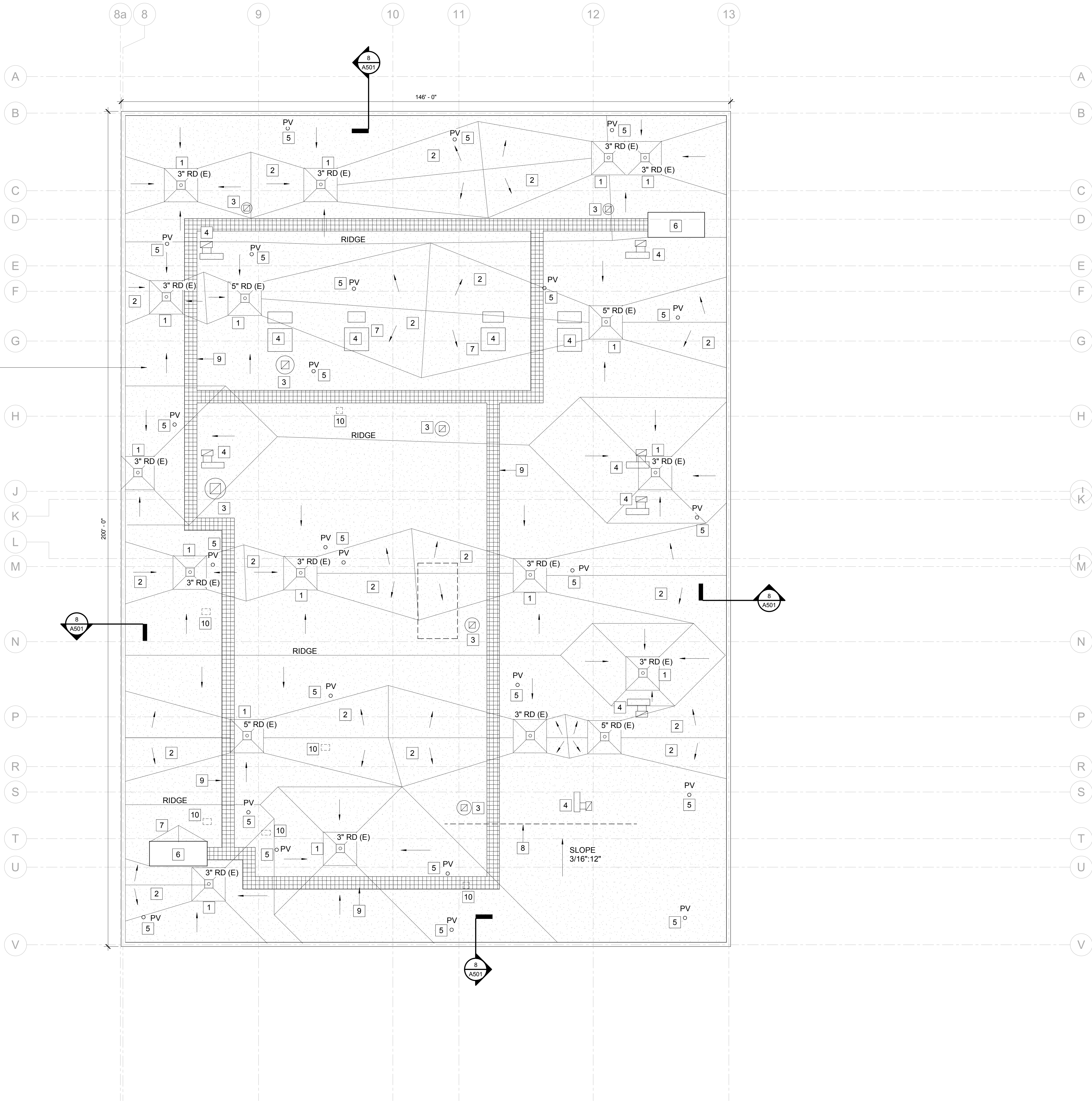
PROJECT NO.
818-010-103

DATE
07/05/19
SHEET NO.

A101
OF (9) SHEETS

ISSUED FOR BIDDING

Wednesday, January 16, 2019 3:17:53 PM
P:\15797 - WLU Roofing Projects\00 - Documents\05 - CDB Documents\CDB Drawing Cover\008 Drawing Cover Sheet - WLU Roof.dwg



TYPICAL NEW ROOFING SYSTEM:
a. FULLY ADHERED 60 MIL EPDM ROOFING MEMBRANE
b. 1/2 INCH HIGH DENSITY COVER BOARD
c. MINIMUM (2) LAYERS - 2.4 INCH TAPERED POLYISOCYANURATE INSULATION - SLOPE TO DRAIN 1/4":12" TYPICAL (U.N.O.)

SEE SPEC SECTION 07 5323

KEYED NOTES - CURRENS HALL - HIGH ROOF

- 1 EXISTING ROOF DRAIN AND STRAINER TO REMAIN, PROVIDE 8" x 8" TAPERED DRAIN SUMP AREA, SEE DETAIL 1/A502 (SIM.)
- 2 TAPERED INSULATION ROOF CRICKET, SLOPE 1/4":12" MINIMUM.
- 3 EXISTING EXHAUST FAN TO REMAIN, MODIFY CURB AS REQUIRED, SEE DETAILS 5/A501 AND 16/A501.
- 4 EXISTING MECHANICAL EQUIPMENT TO REMAIN. SEE DETAILS FOR NEW ELEVATED CURBS.
- 5 EXISTING PLUMBING VENT TO REMAIN, SEE DETAIL 4/A501.
- 6 EXISTING ROOF SCUTTLE TO REMAIN.
- 7 PROVIDE ADDITIONAL TAPERED INSULATION CRICKET AS REQUIRED AT ROOF SCUTTLES AND MECHANICAL EQUIPMENT.
- 8 EXISTING ELECTRICAL SERVICE TO REMAIN, REINSTALL PIPE SUPPORTS ATOP NEW ROOF CONSTRUCTION, PROVIDE NEW PIPE SUPPORTS AS REQUIRED.
- 9 NEW EPDM WALKWAY ROLLS OR PADS.
- 10 NEW CONCRETE DECK INFILL AT REMOVED EQUIPMENT, SEE DETAIL 15/A501.

1 UPPER ROOF PLAN - CURRENS HALL

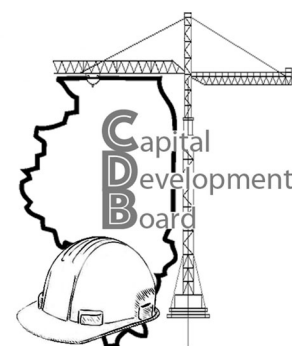
SCALE: 3/32" = 1'-0"

0 8' 16' 24'



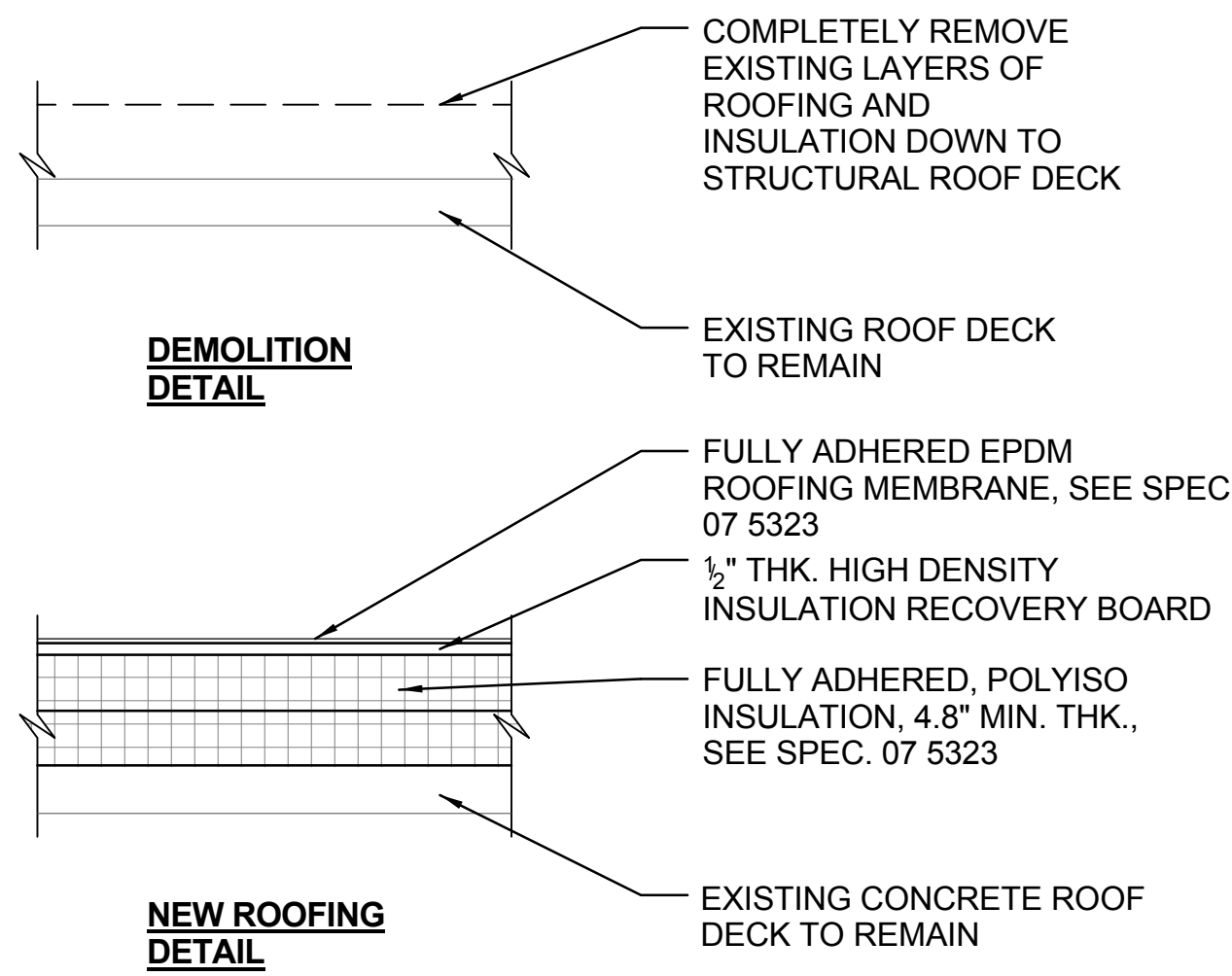
NOTE: CONTRACTOR SHALL OBTAIN AND VERIFY ALL DIMENSIONS AND CONDITIONS AT JOB SITE AND BE FULLY RESPONSIBLE FOR SAME.

REVISIONS			DRAWN	PREPARED		ARCHITECT OF RECORD:	CONSULTING ARCHITECT:				UPPER ROOF PLAN - CURRENS HALL	PROJECT NO. 818-010-103
NO.	DATE	REMARKS										
			PTW			ARCHITECHNICS 510 MAINE STREET, 10TH FLOOR QUINCY, IL 62301	EVANS CONSULTING SERVICES 10891 CONESTOGA DRIVE GLENARM, IL 62536				REPAIR AND REPLACE ROOFS - PHASE I ILLINOIS BOARD OF HIGHER EDUCATION WESTERN ILLINOIS UNIVERSITY MACOMB, McDONOUGH COUNTY	DATE 07/05/19 SHEET NO. A102 OF (9) SHEETS
			TRACED	APPROVED								
			CHECKED	APPROVED		CONSULTING ENGINEER: FUHRMANN ENGINEERING 2852 SOUTH 11TH STREET SPRINGFIELD, IL 62703						
			PTW									

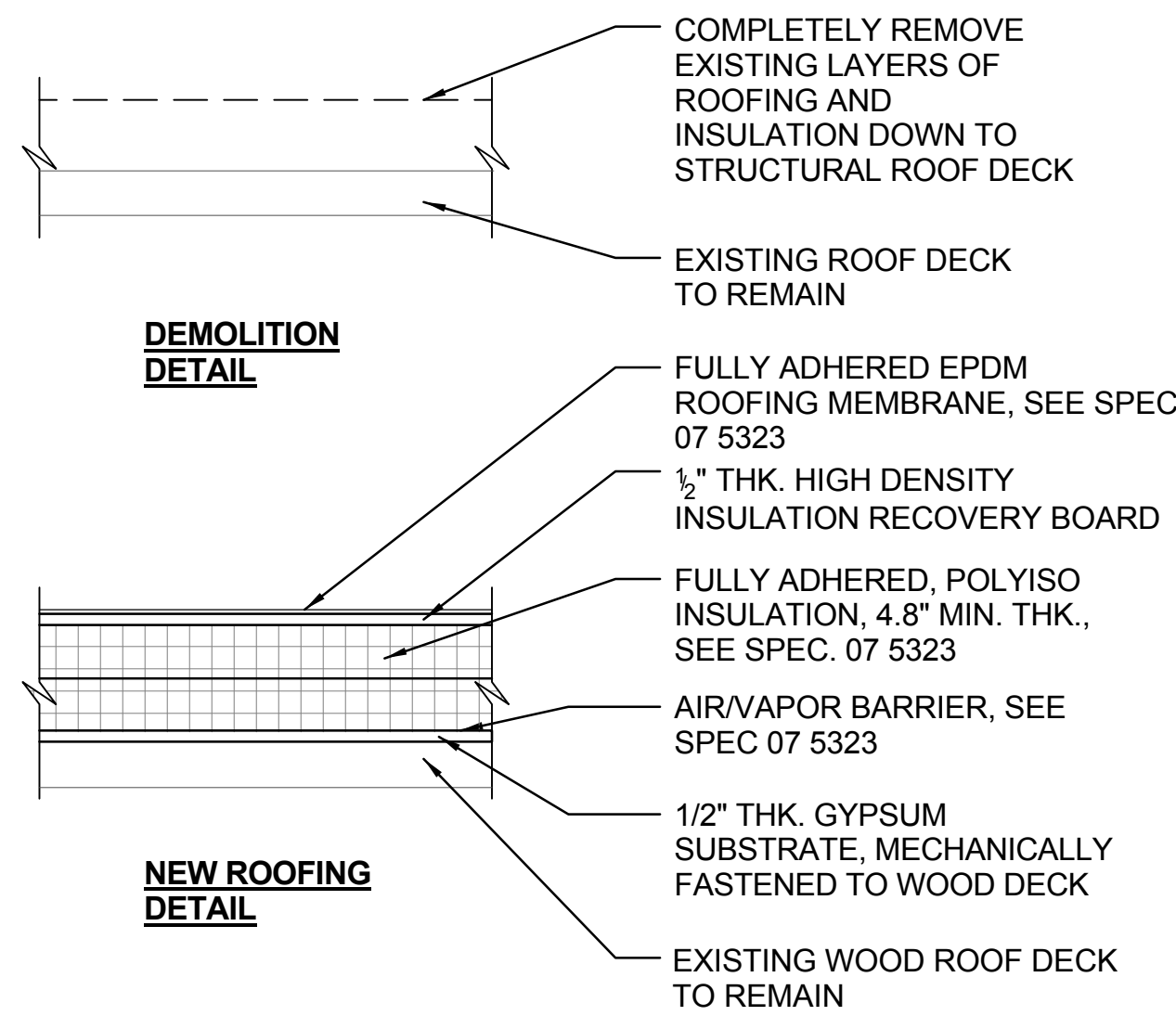


State of Illinois
JB PRITZKER, GOVERNOR
Illinois Capital Development Board

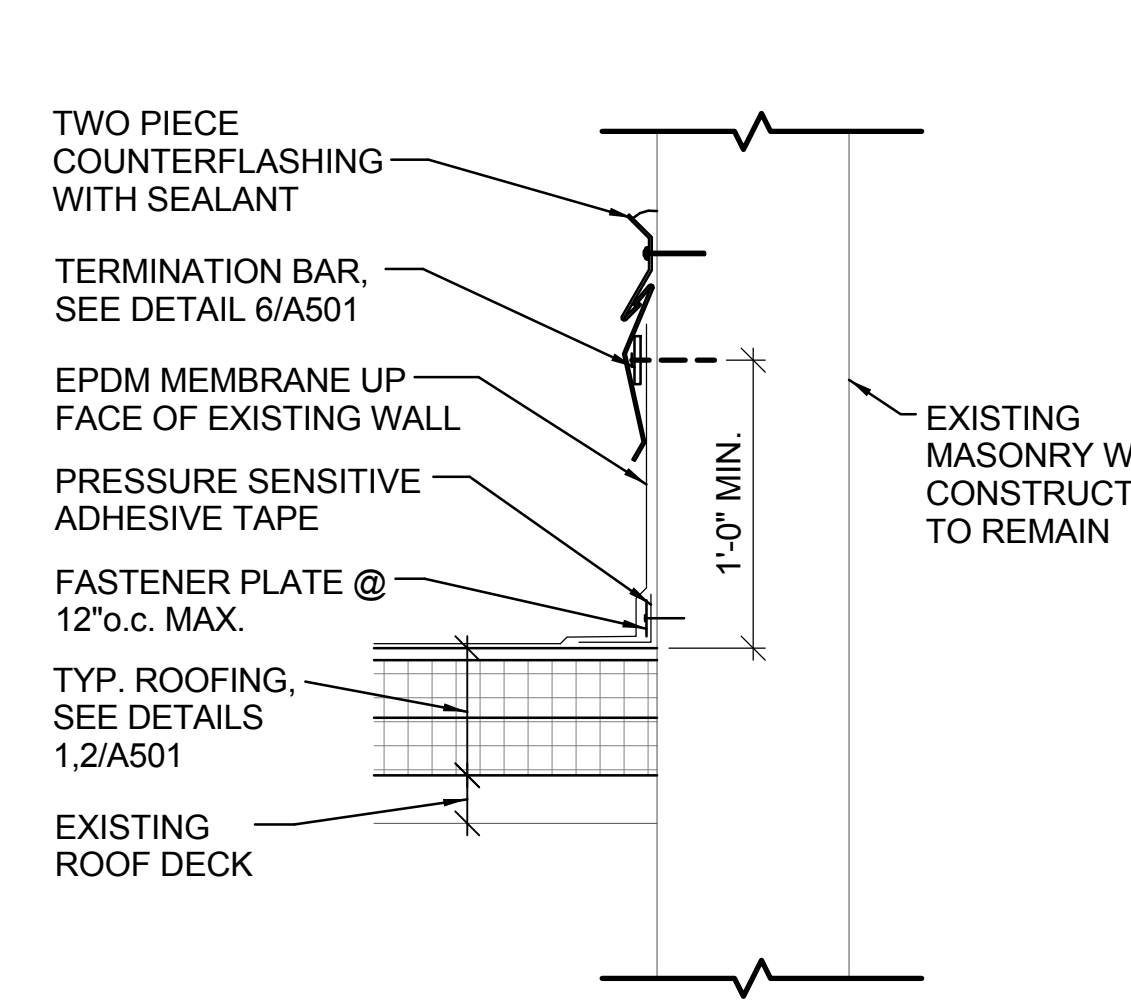
ISSUED FOR BIDDING



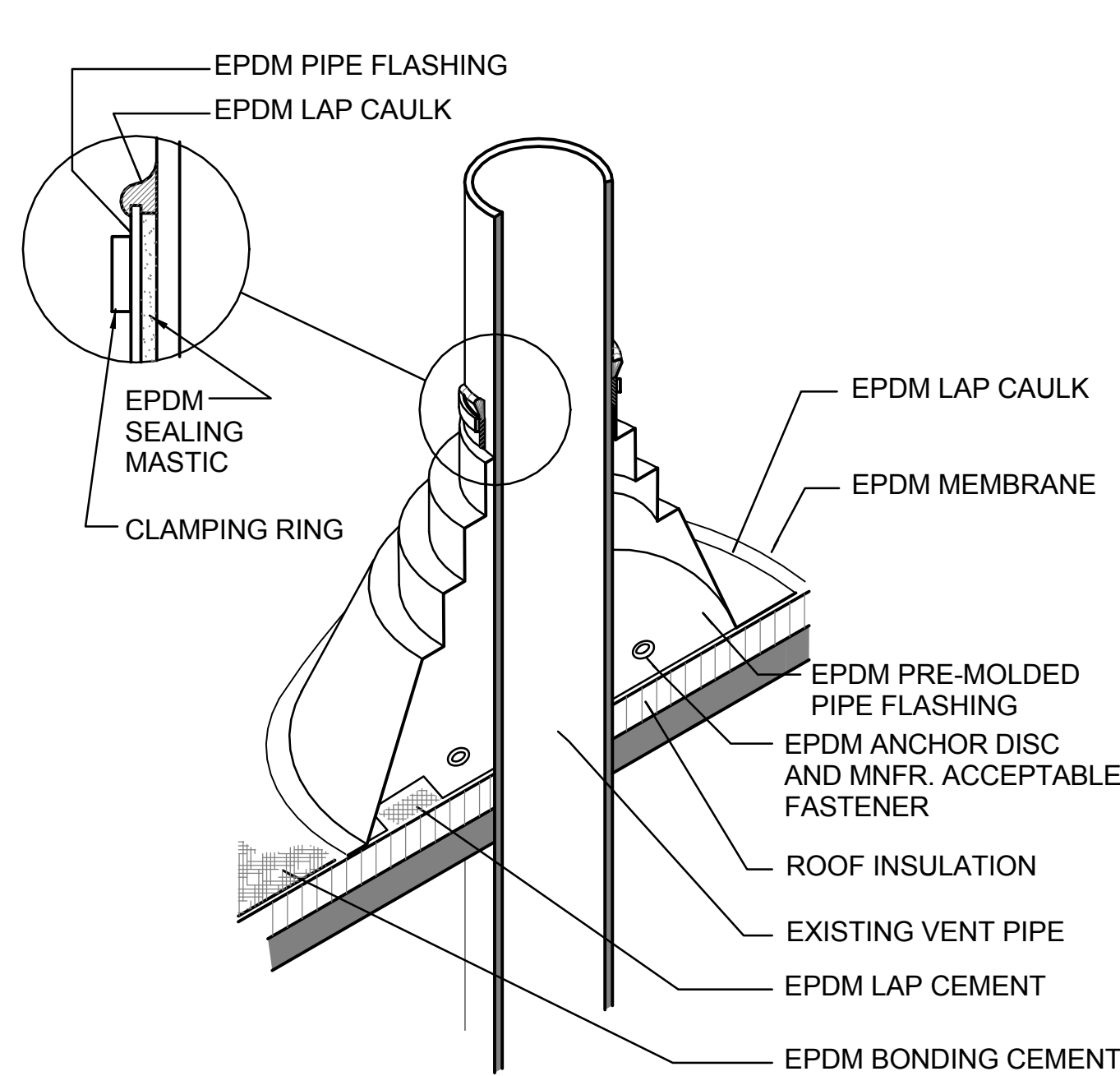
1 TYPICAL ROOFING DETAIL
SCALE: 1 1/2" = 1'-0"



2 TYPICAL ROOFING DETAIL
SCALE: 1 1/2" = 1'-0"



3 EDGE FLASHING DETAIL
SCALE: 1 1/2" = 1'-0"



NOTES:

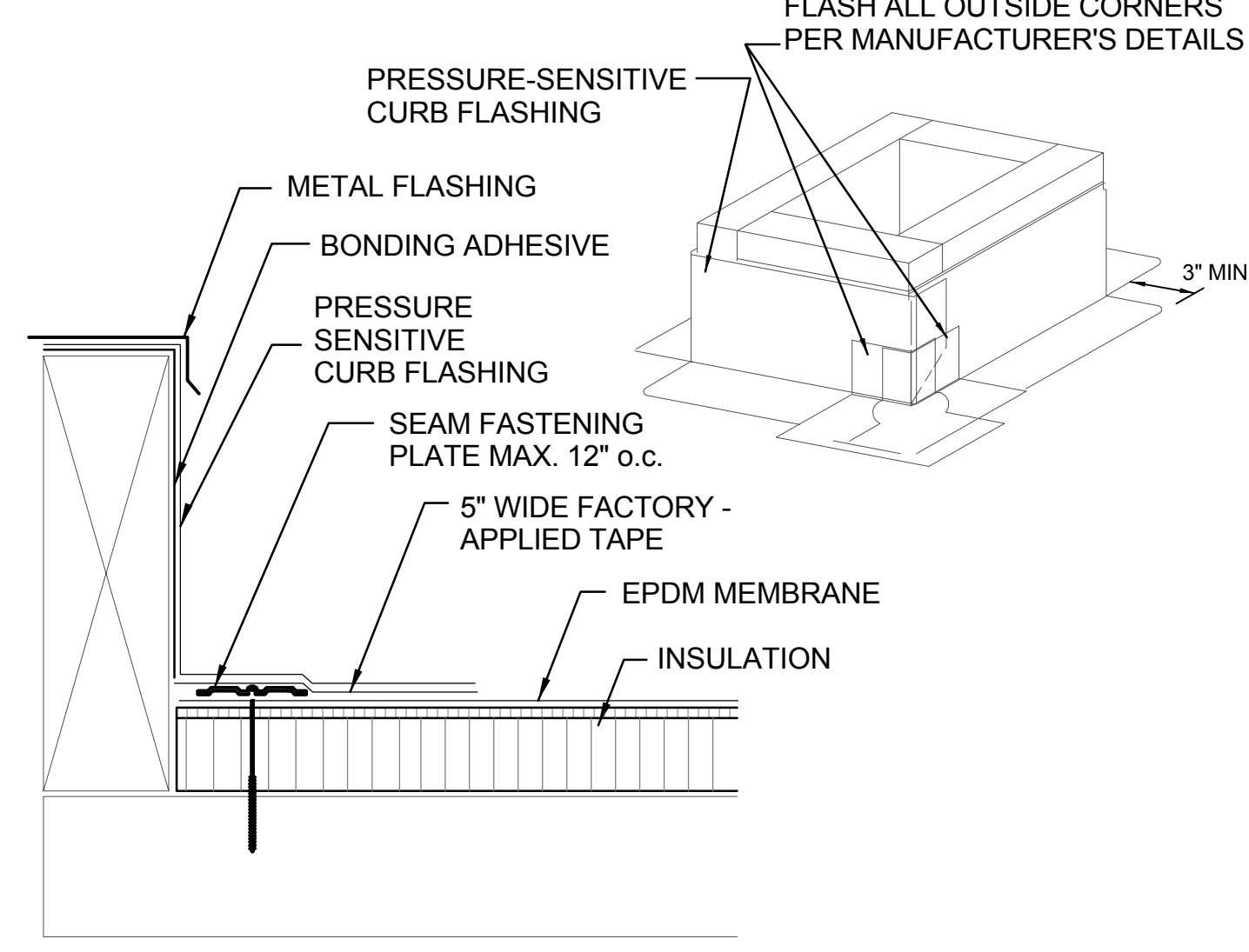
- DO NOT OVERLAP THE FLANGES FROM ADJACENT PIPE FLASHINGS.
- ANY SEAM UNDER BOOT FLANGE TO BE TREATED AS T-JOINT.

4 PIPE FLASHING DETAIL
SCALE: N.T.S

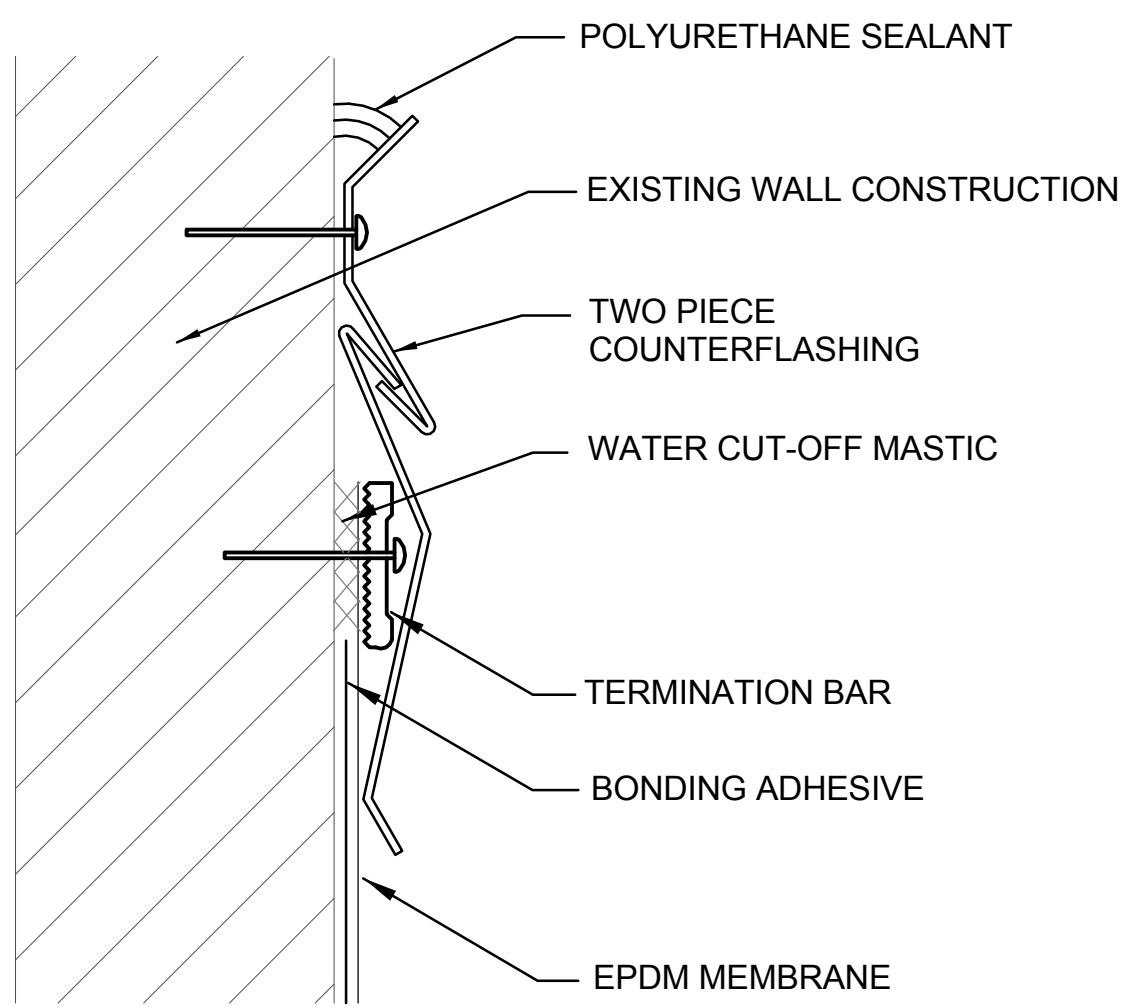
GENERAL NOTES:

TOUCH-UP PAINT ON EXISTING SURFACES NEXT TO NEW WORK AS REQ'D.

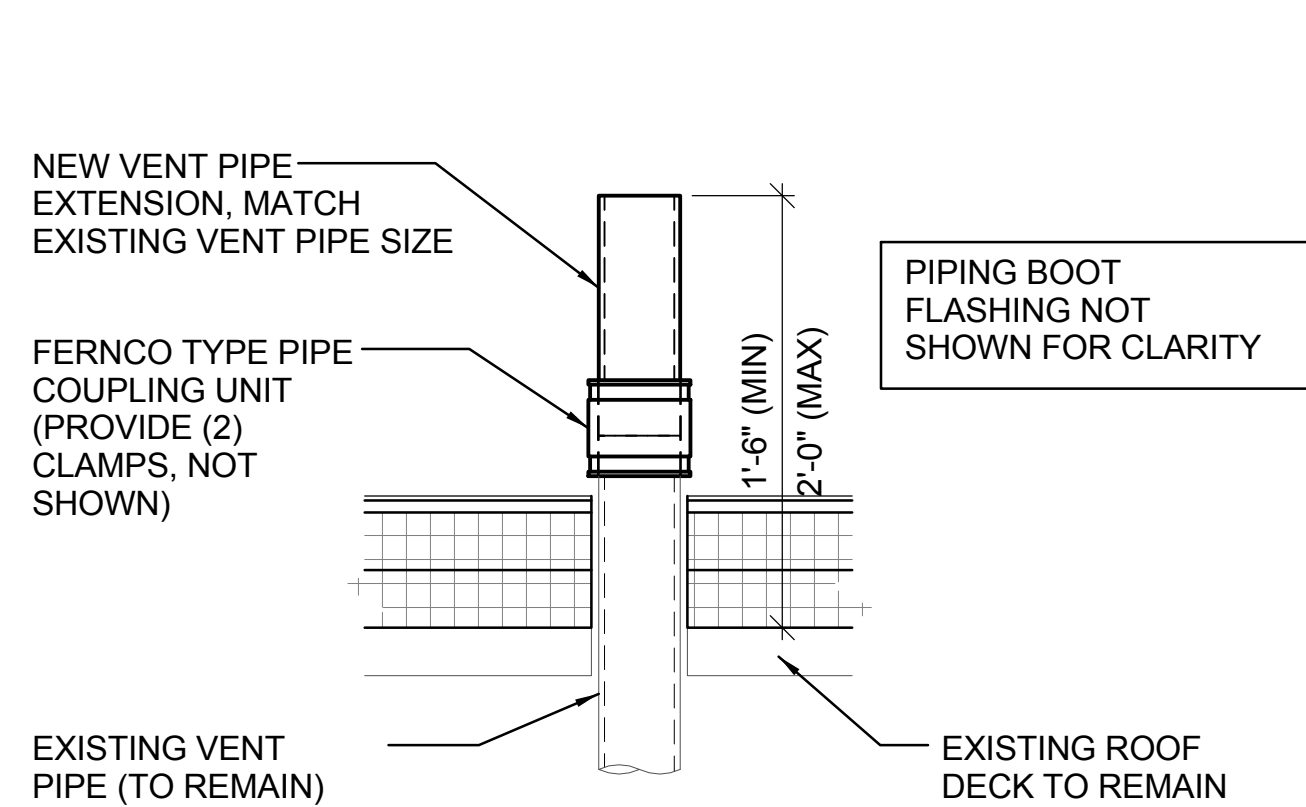
DETAILS SHOWN ARE FOR CONTRACTORS INFORMATION AND TO COMMUNICATE DESIGN INTENT. DETAILS SHOWN ARE BASED UPON BEST INFORMATION AVAILABLE AT TIME. CONTRACTOR SHALL FIELD VERIFY ALL EXISTING CONDITIONS. IN ORDER TO ACHIEVE MANUFACTURER'S WARRANTY, DETAILS MAY ALSO VARY BASED UPON MANUFACTURER'S SYSTEM AND DESIGN RECOMMENDATIONS. SHOP DRAWING SUBMITTALS REQUIRED.



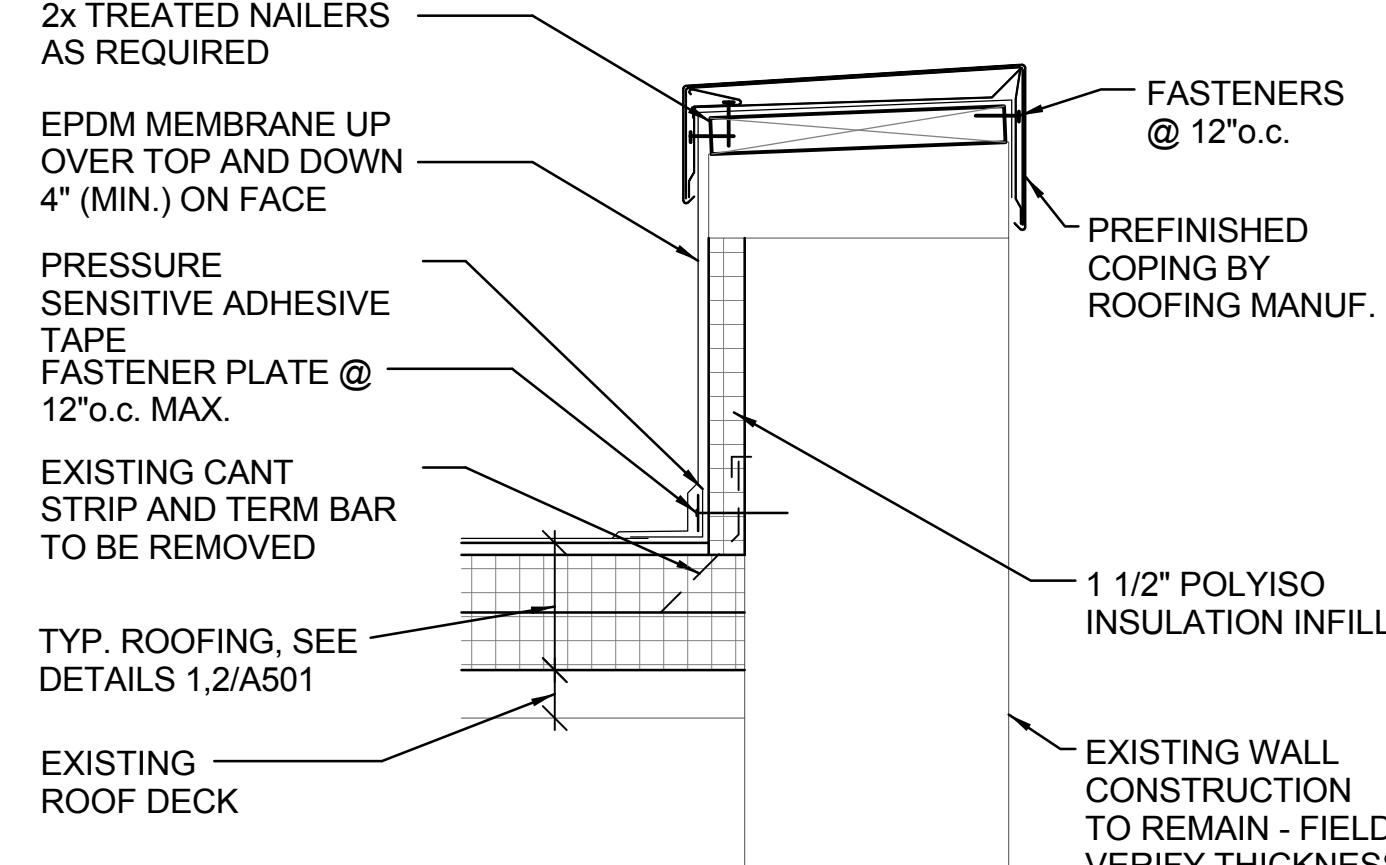
5 ROOF CURB DETAIL
SCALE: N.T.S.



6 TERMINATION BAR DETAIL
SCALE: N.T.S.

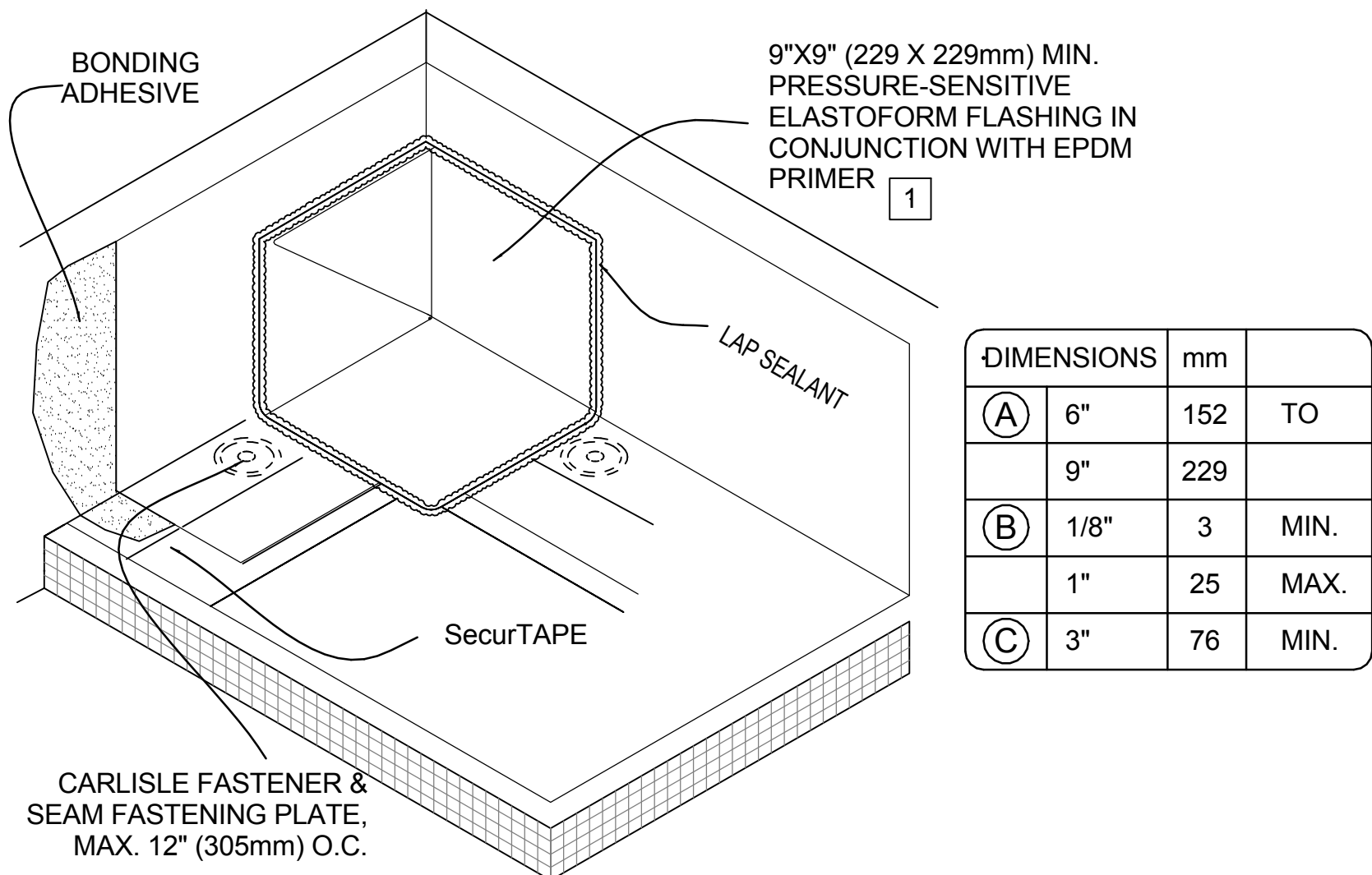


7 PLUMBING VENT EXTENSION
SCALE: 1 1/2" = 1'-0"

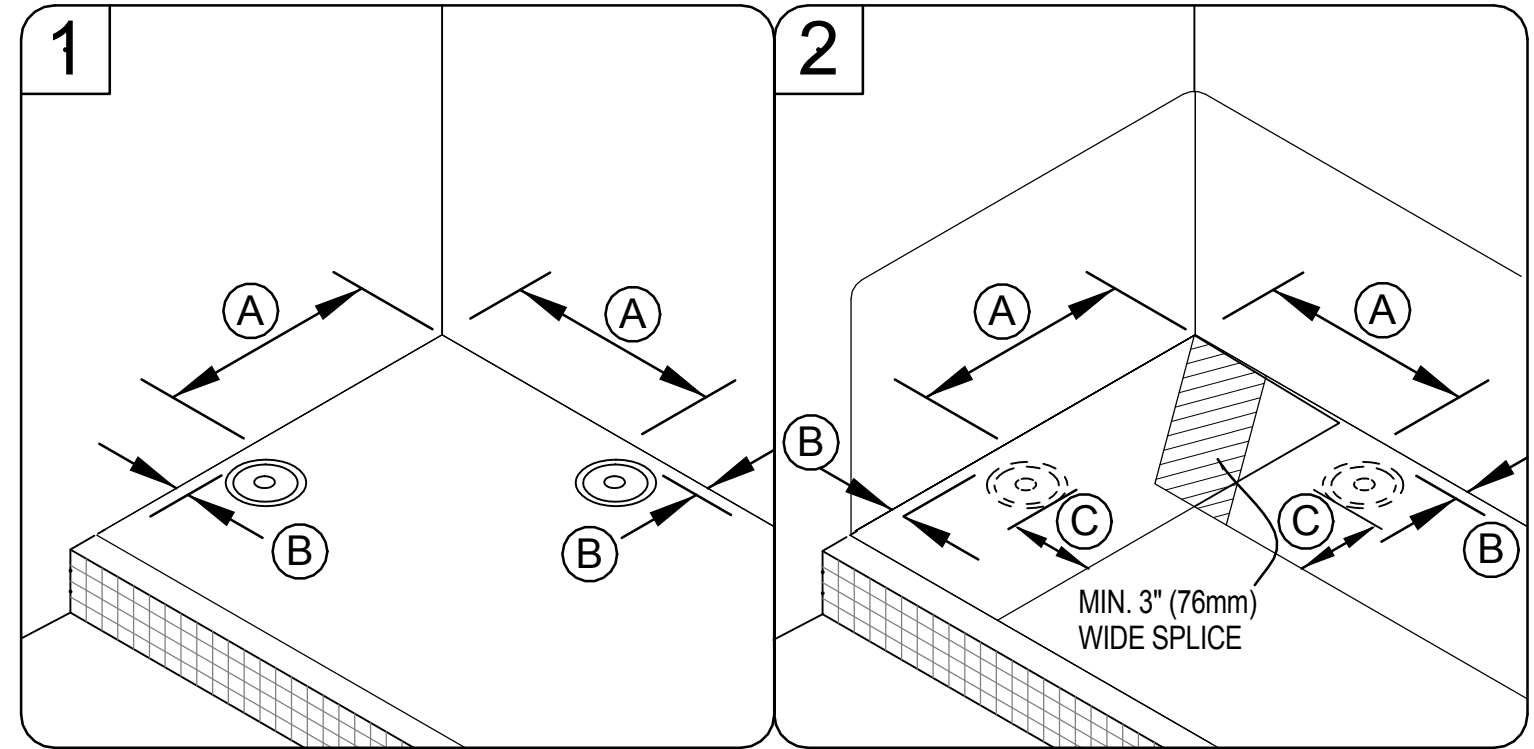


NOTE: COPING EQ. TO METAL-ERA "PERMA-TITE" OR APPROVED EQUAL, COLOR TO MATCH EXISTING, VERIFY AT PROJECT SITE

8 EDGE FLASHING DETAIL
SCALE: 1 1/2" = 1'-0"

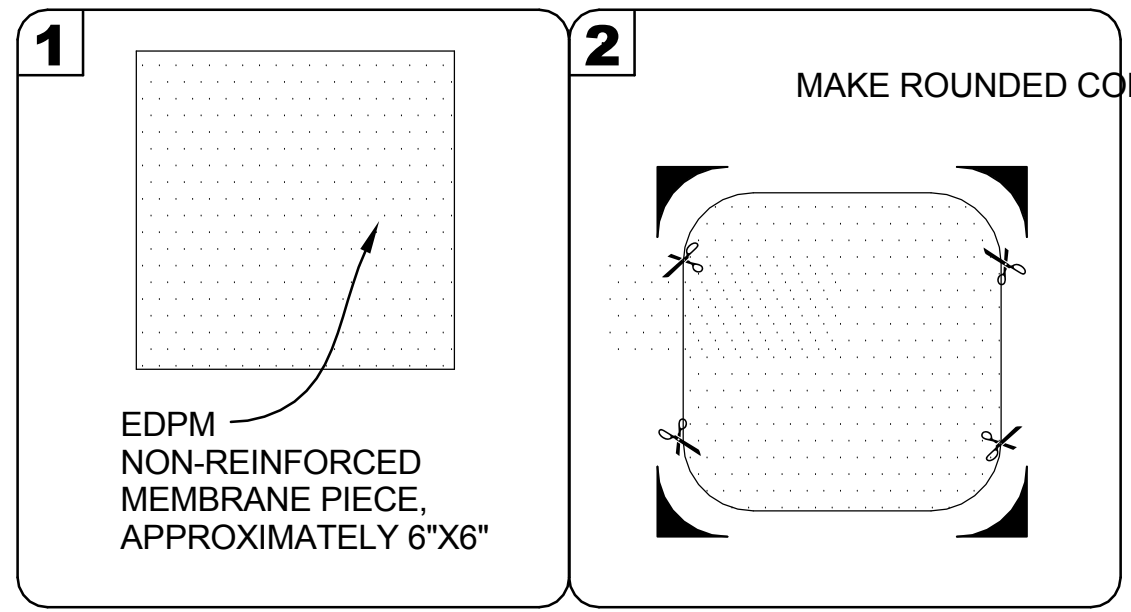


DIMENSIONS	mm	
(A) 6"	152	TO
9"	229	
(B) 1/8"	3	MIN.
1"	25	MAX.
(C) 3"	76	MIN.

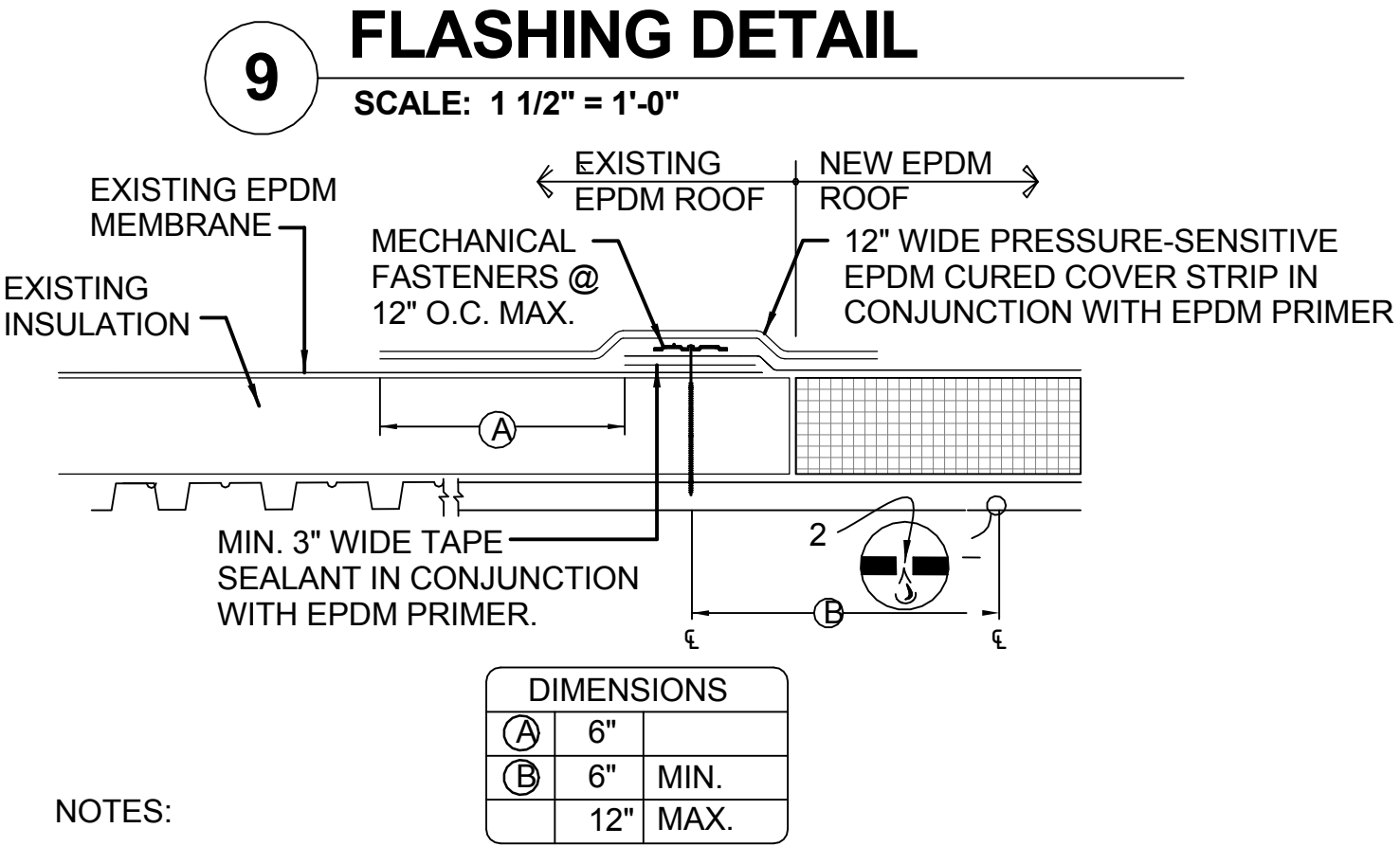
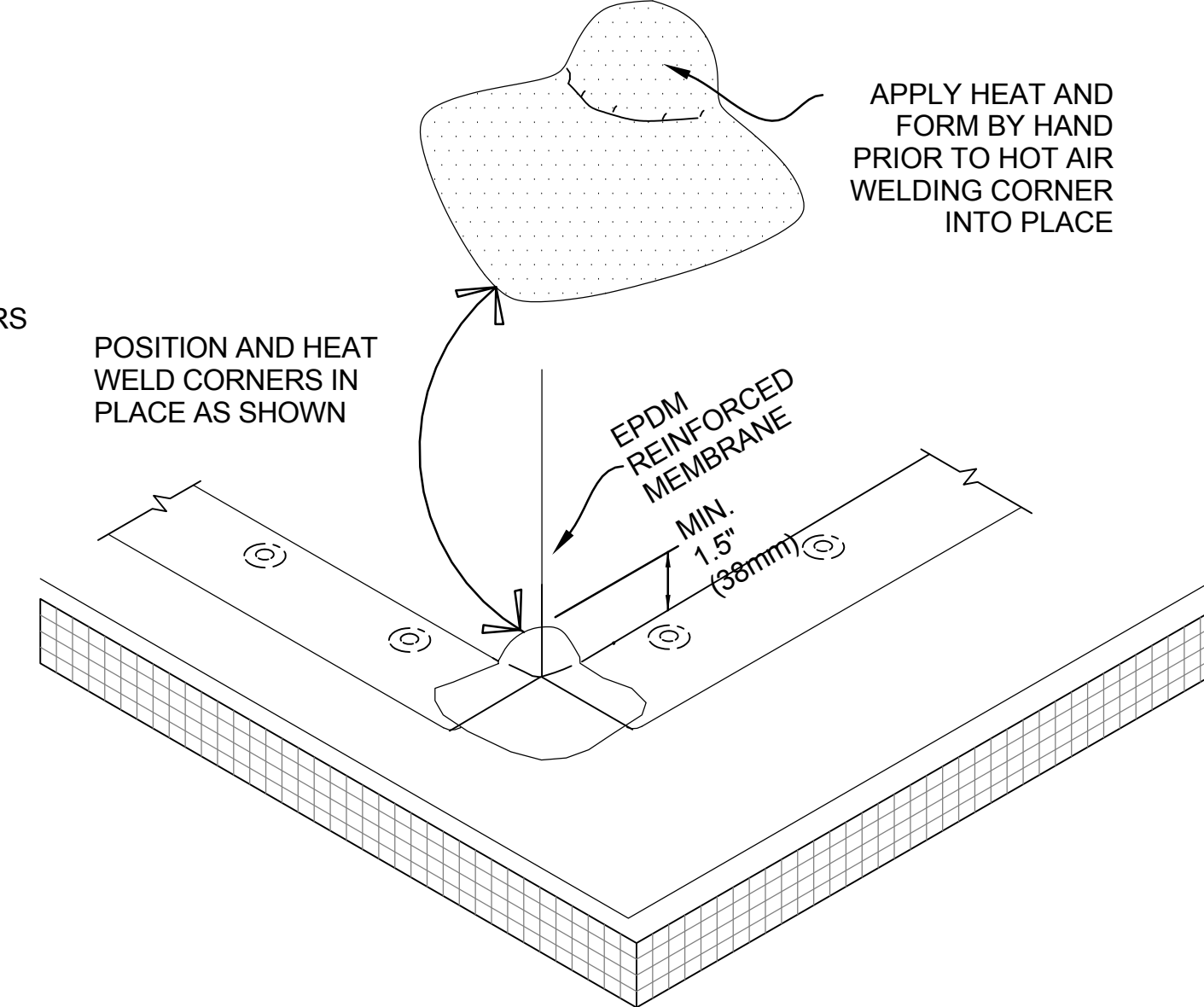


NOTES:

- APPLY EPDM PRIMER TO THE MEMBRANE SURFACES PRIOR TO INSTALLING PRESSURE-SENSITIVE FLASHING.
- IN COLDER TEMPERATURES, A HEAT GUN MUST BE USED WHEN FORMING PRESSURE-SENSITIVE ELASTOFORM FLASHING.



11 FIELD FABRICATED OUTSIDE CORNER FLASHING
SCALE: 3" = 1'-0"

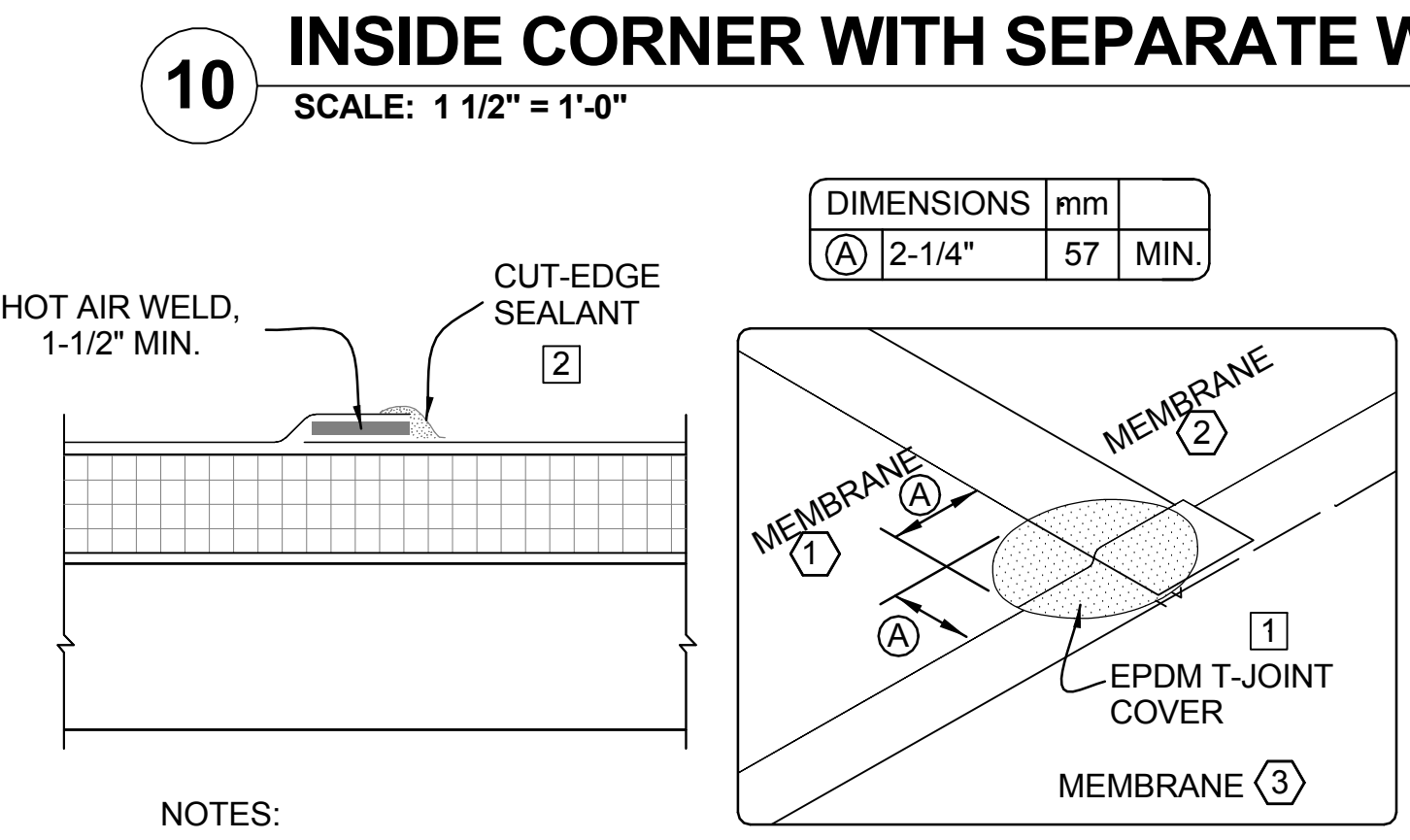


NOTES:

- PRIOR TO SPLICING, CLEAN EXISTING EPDM MEMBRANE BY SCRUBBING THE SPLICE AREA WITH WEATHERED MEMBRANE CLEANER AND ALLOW TO DRY.
- DRILL A 3/8" DIAMETER WEEP HOLE INTO THE BOTTOM FLUTES OF THE STEEL DECK ALONG THE PERIMETER OF THE TIE-IN 6" MINIMUM TO 12" MAXIMUM FROM THE SEAM FASTENING PLATE.
- ALL SPLICE INTERSECTIONS MUST BE OVERLAID WITH PRESSURE-SENSITIVE T-JOINT COVERS.

DIMENSIONS	
(A) 6"	
(B) 6"	MIN.
12"	MAX.

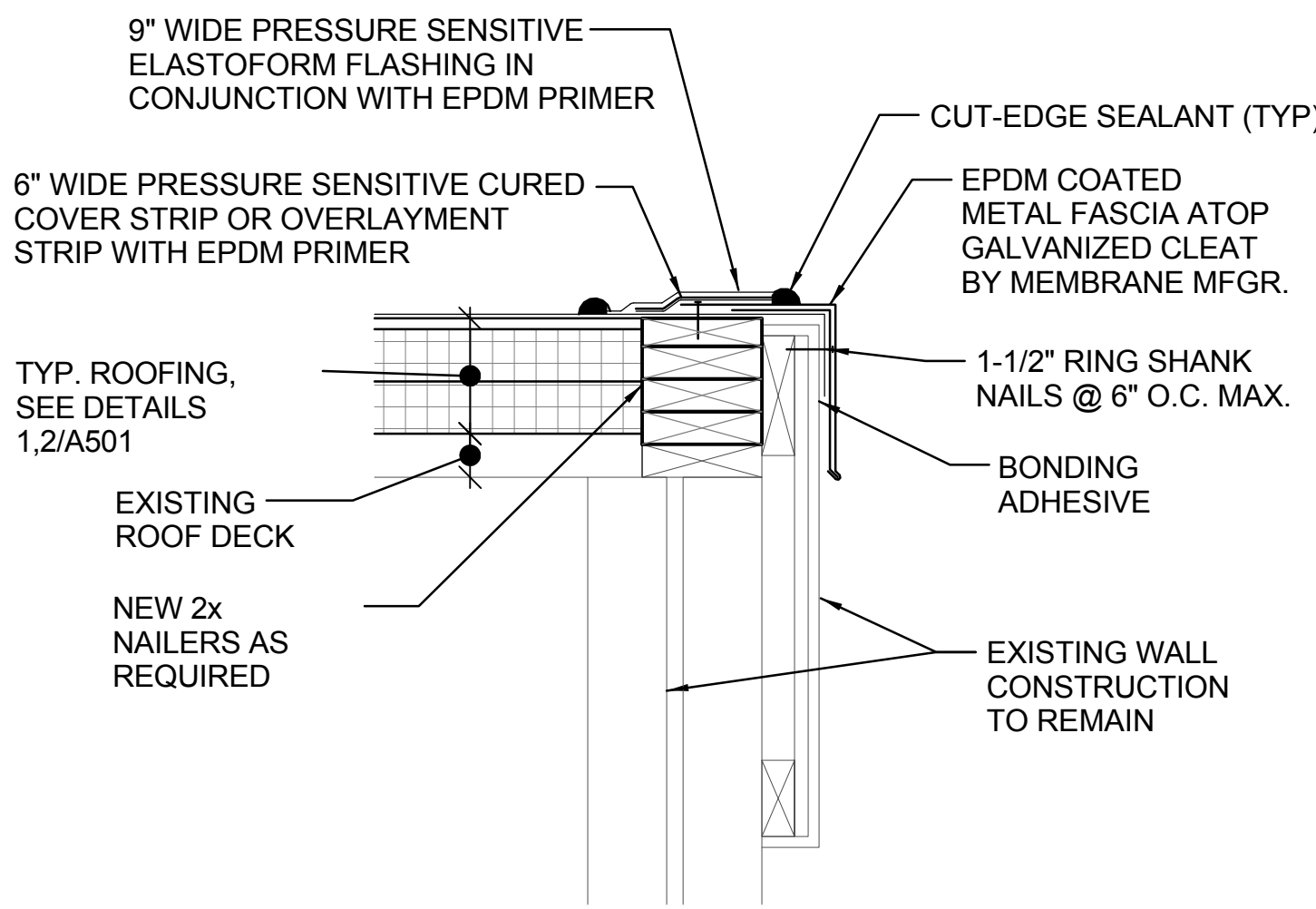
12 MEMBRANE TIE-IN DETAIL
SCALE: 3" = 1'-0"



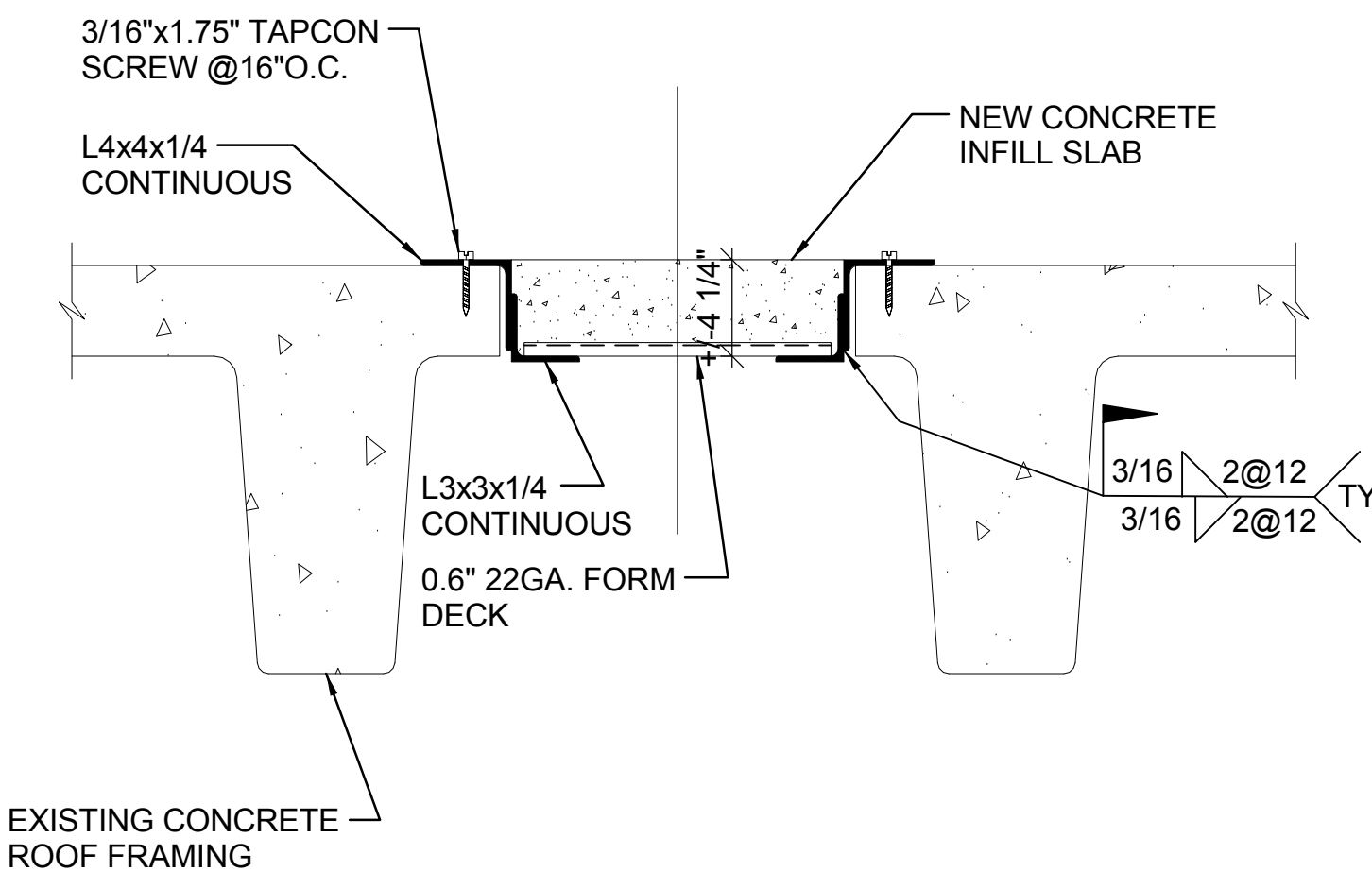
NOTES:

- WHEN USING 60 OR 80-MIL MEMBRANE, APPLY A 4-1/2" (114mm) DIAMETER "T-JOINT" COVER AT ALL FIELD SPLICE INTERSECTIONS.
- APPROXIMATELY 1/8" (3mm) BEAD OF CUT-EDGE SEALANT IS REQUIRED ON CUT EDGES OF EPDM MEMBRANE AND RECOMMENDED ON CUT EDGES OF SURE-FLEX PVC MEMBRANE.

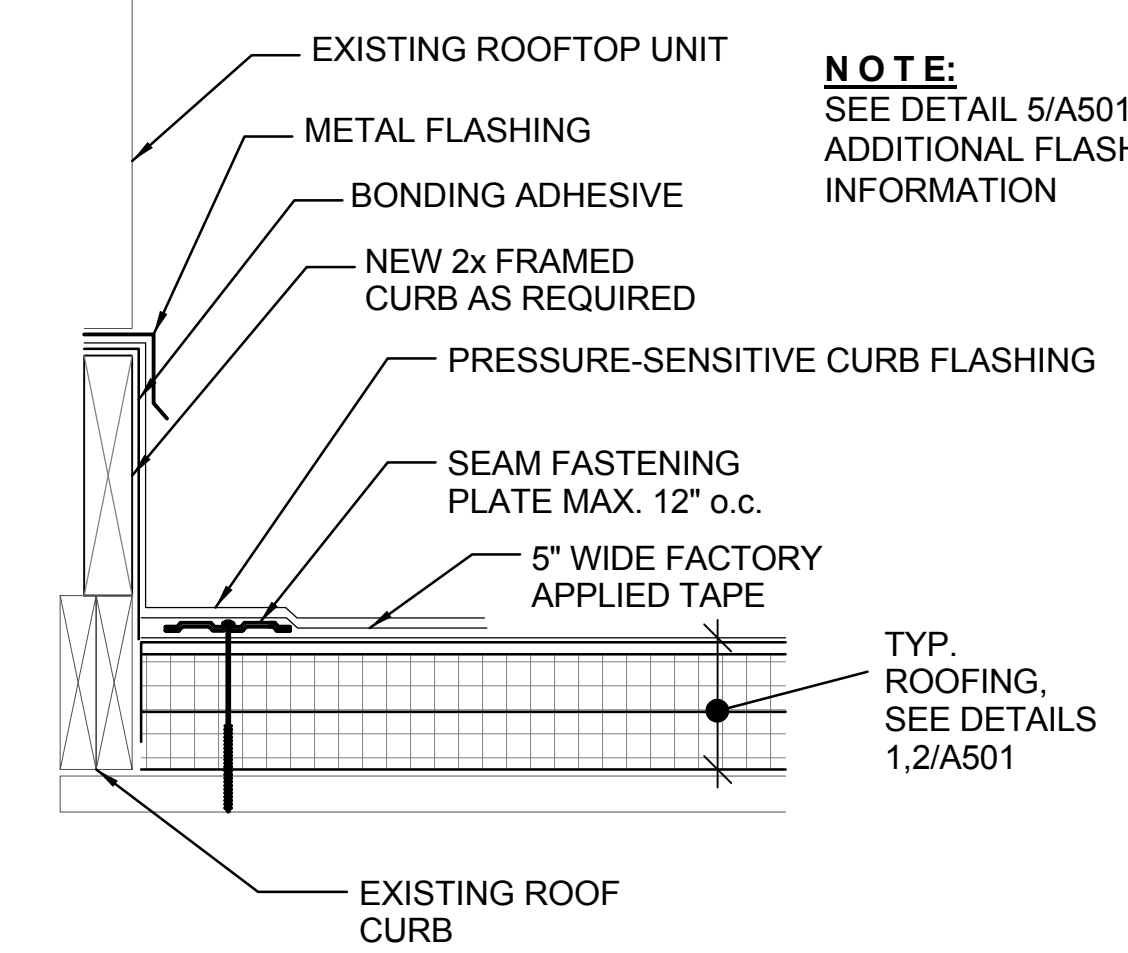
13 EPDM MEMBRANE SPLICE DETAIL
SCALE: 1 1/2" = 1'-0"



14 EDGE FLASHING DETAIL
SCALE: 1 1/2" = 1'-0"

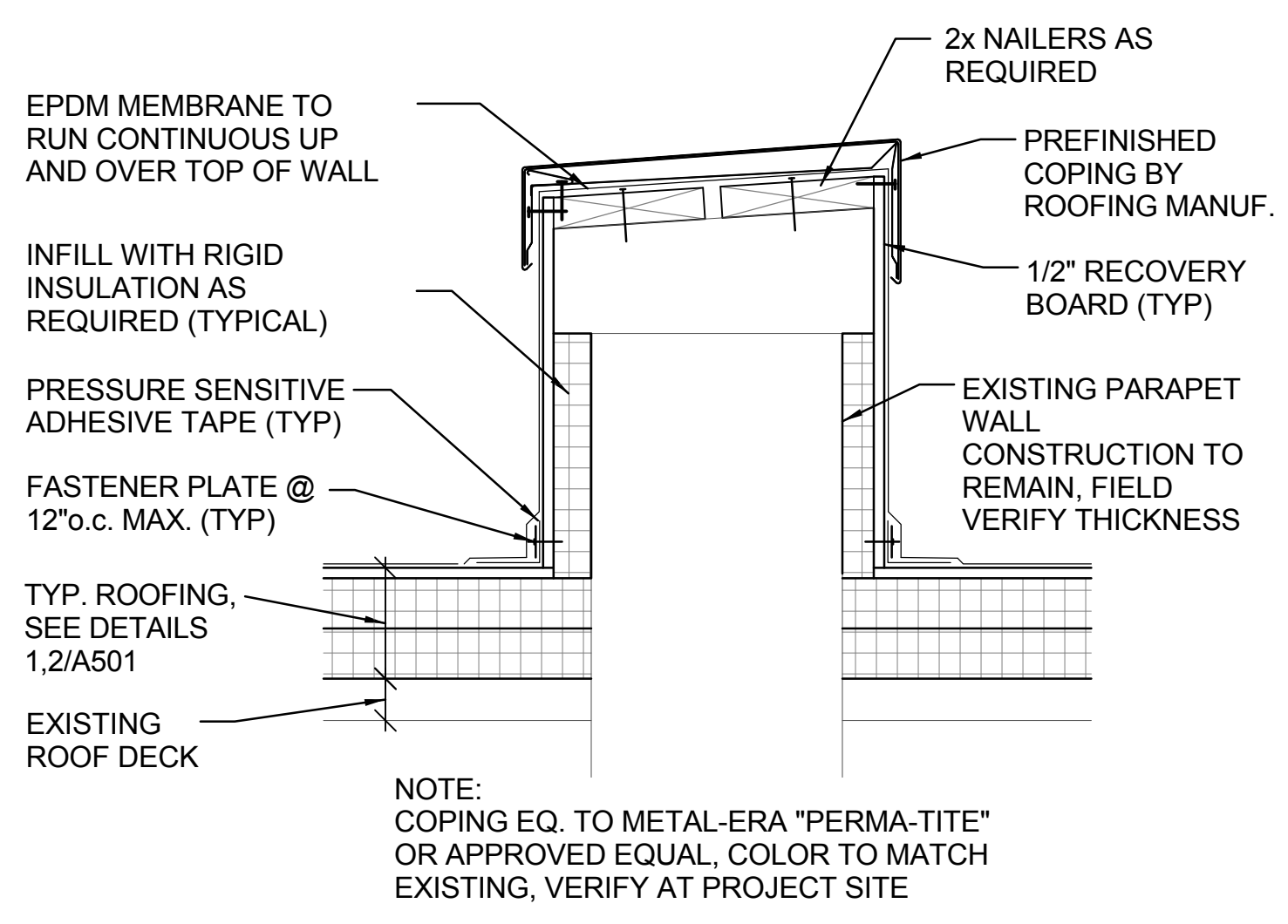


15 EXISTING ROOF PENETRATION INFILL DETAIL
SCALE: 1 1/2" = 1'-0"



NOTE: SEE DETAIL 5/A501 FOR ADDITIONAL FLASHING INFORMATION

16 ROOF CURB DETAIL
SCALE: 1 1/2" = 1'-0"



17 PARAPET FLASHING DETAIL
SCALE: 1 1/2" = 1'-0"

ISSUED FOR BIDDING

NOTE: CONTRACTOR SHALL OBTAIN AND VERIFY ALL DIMENSIONS AND CONDITIONS AT JOB SITE AND BE FULLY RESPONSIBLE FOR SAME.

REVISIONS

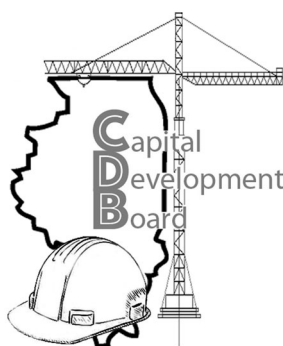
NO.	DATE	REMARKS

DRAWN	PREPARED
BMS	
TRACED	APPROVED
CHECKED	APPROVED
BMS	

ARCHITECT OF RECORD:
ARCHITECTONICS
510 MAINE STREET, 10TH FLOOR
QUINCY, IL 62301

CONSULTING ENGINEER:
FUHRMANN ENGINEERING
2852 SOUTH 11TH STREET
SPRINGFIELD, IL 62703

CONSULTING ARCHITECT:
EVANS CONSULTING SERVICES
10891 CONESTOGA DRIVE
GLENARM, IL 62536



State of Illinois
JB PRITZKER, GOVERNOR
Illinois Capital Development Board

ROOFING DETAILS

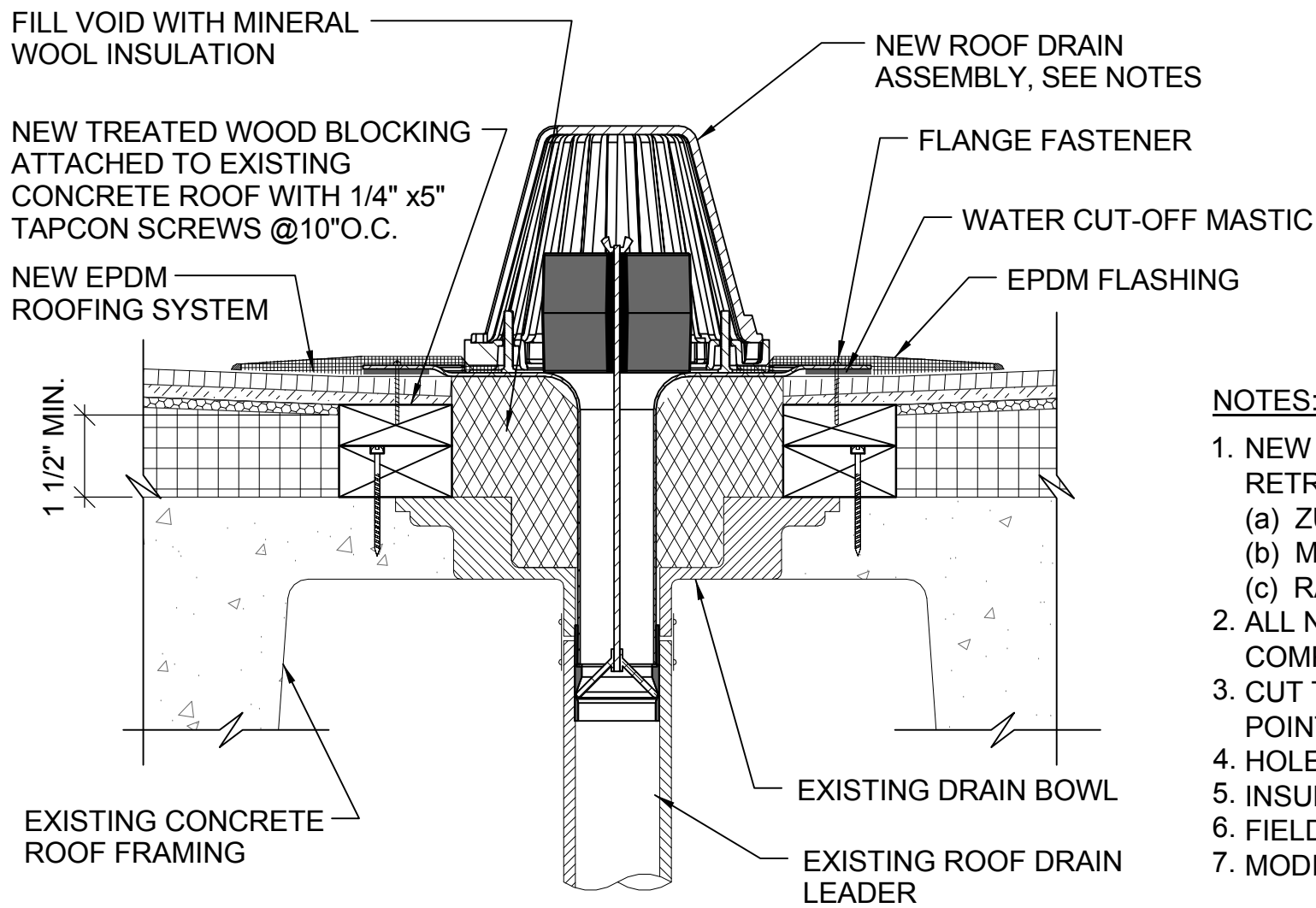
REPAIR AND REPLACE ROOFS - PHASE I
ILLINOIS BOARD OF HIGHER EDUCATION
WESTERN ILLINOIS UNIVERSITY
MACOMB, McDONOUGH COUNTY

PROJECT NO.
818-010-103

DATE
07/05/19

SHEET NO.
A501

OF (9) SHEETS

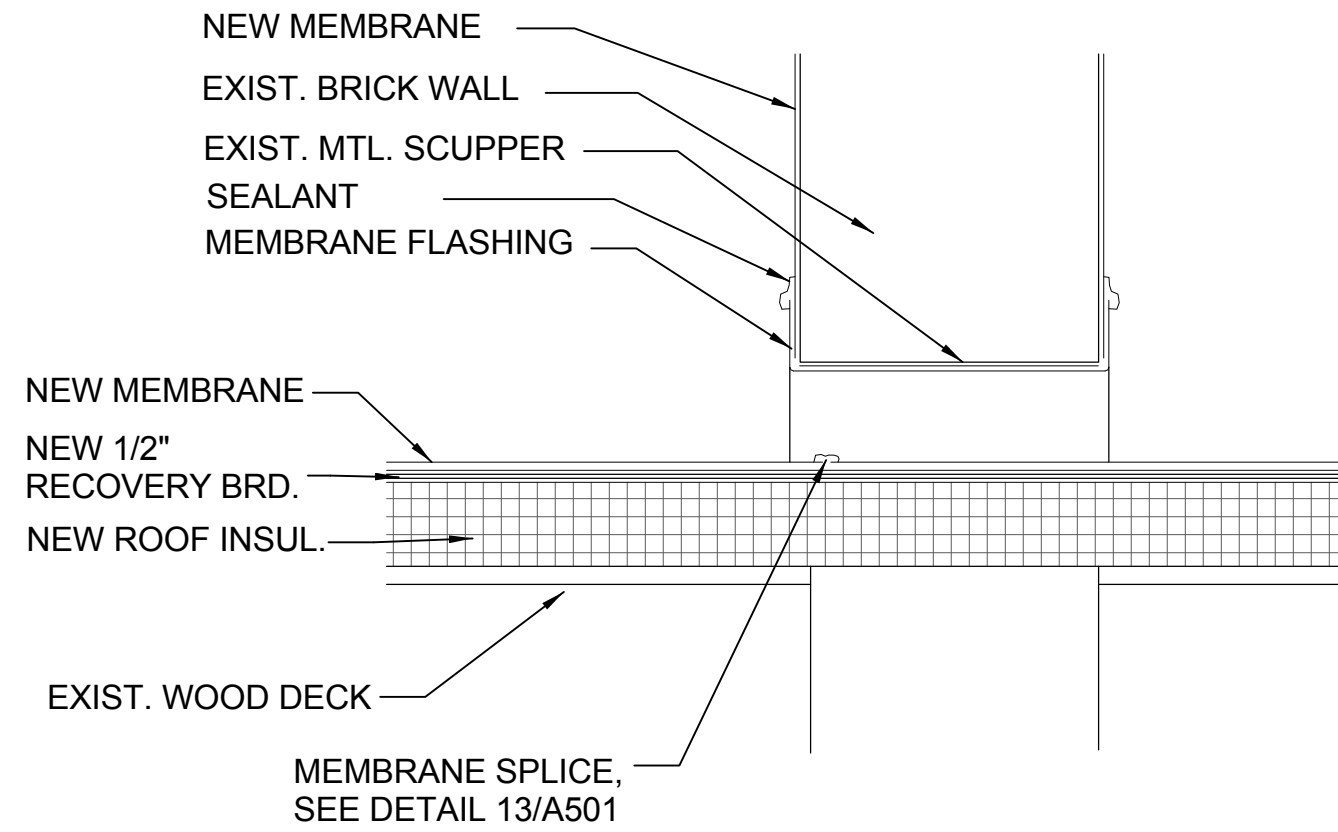


NOTES:

1. NEW ROOF DRAIN BASIS OF DESIGN - O.M.G ROOFING PRODUCTS "HERCULES RETRO-DRAIN". ACCEPTABLE MANUFACTURERS:
(a) ZURN
(b) MARATHON
(c) RAC
2. ALL NUTS AND CLAMPING RING MUST BE IN PLACE TO PROVIDE CONSTANT COMPRESSION ON WATER CUT-OFF MASTIC.
3. CUT THE MEMBRANE SO IT EXTENDS A MIN. OF 1/2" FROM THE ATTACHMENT POINTS OF THE DRAIN CLAMPING RING.
4. HOLE IN MEMBRANE MUST EXCEED SIZE OF DRAIN PIPE.
5. INSULATION TAPER SHALL NOT BE MORE THAN 6 IN 12.
6. FIELD SPLICES MUST BE LOCATED AT LEAST 6" OUTSIDE THE DRAIN SUMP
7. MODIFY INSERT DRAIN AS REQUIRED TO FIT EXISTING PIPE.

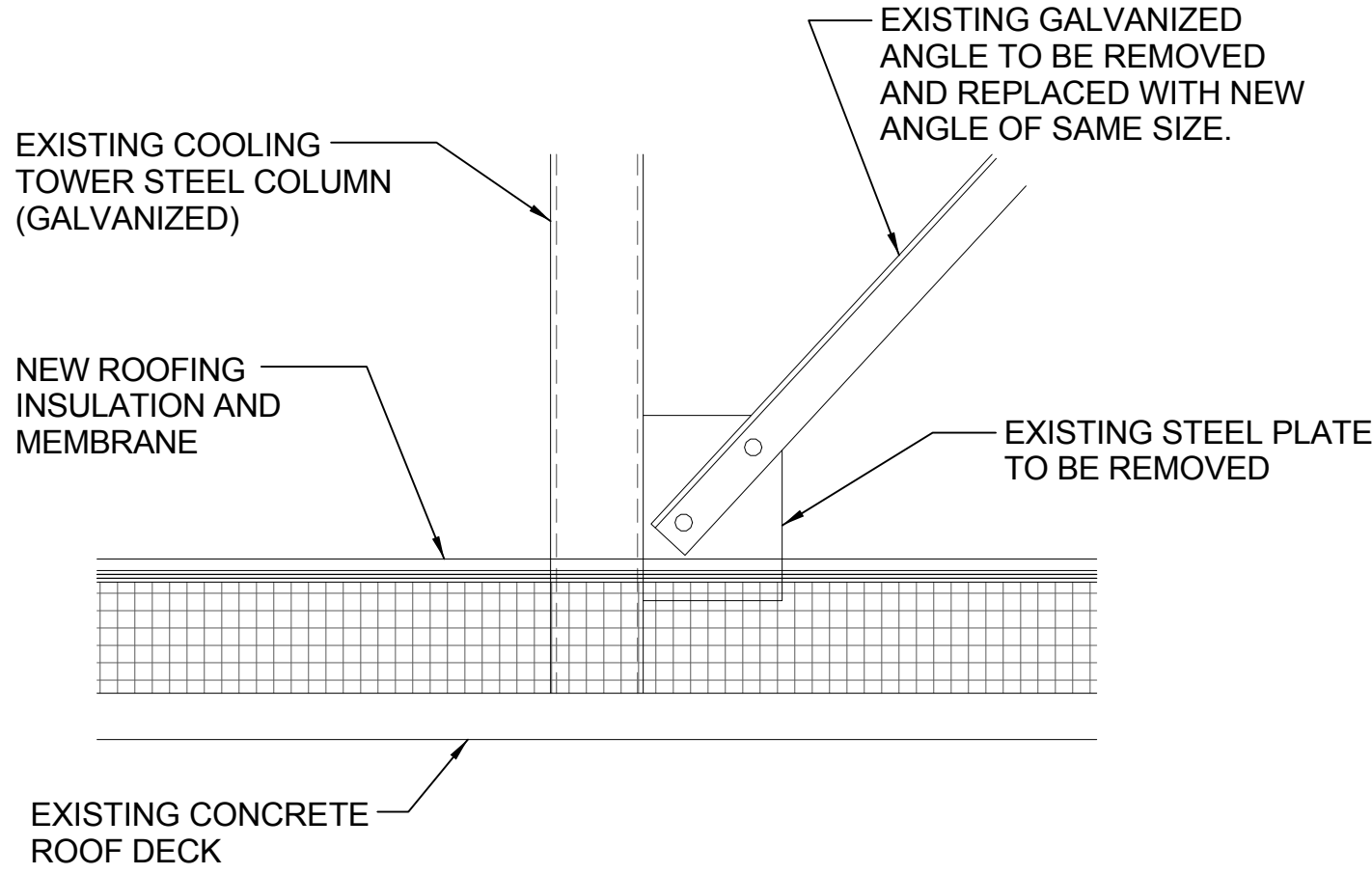
1 ROOF DRAIN DETAIL

SCALE: 1 1/2" = 1'-0"



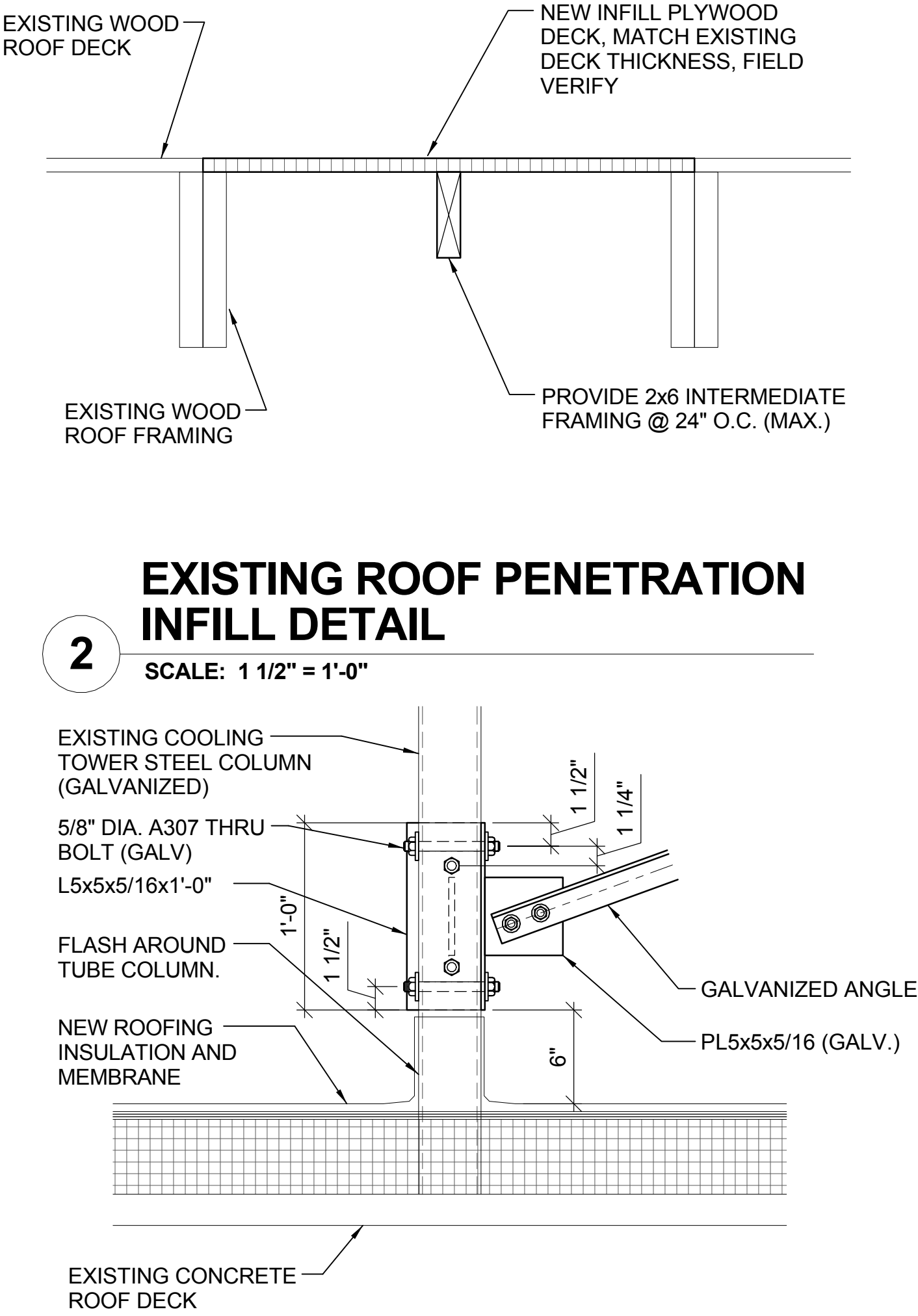
4 SCUPPER DETAIL

SCALE: 1 1/2" = 1'-0"



5 FRAMING DETAIL

SCALE: 1 1/2" = 1'-0"

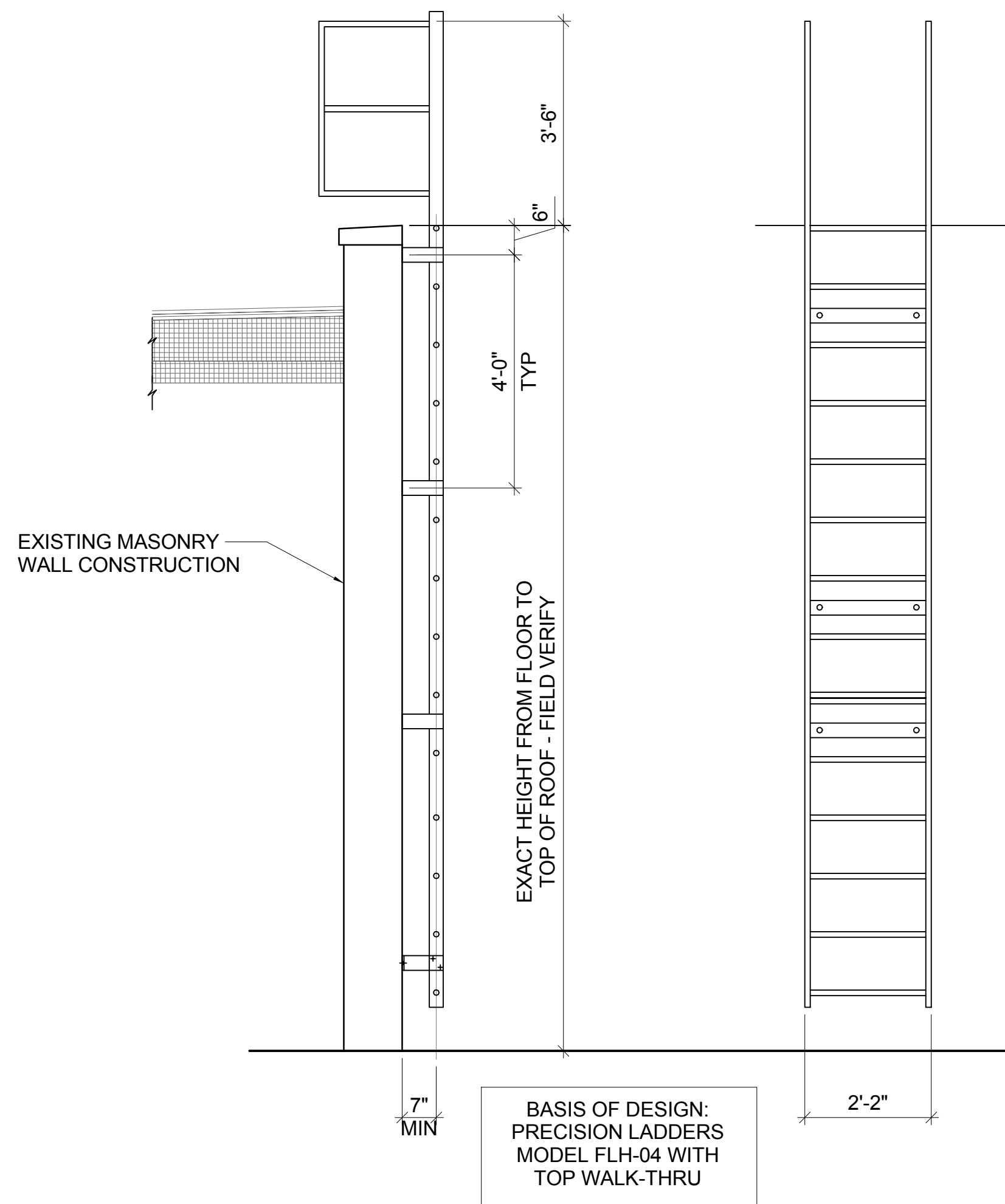


2 EXISTING ROOF PENETRATION INFILL DETAIL

SCALE: 1 1/2" = 1'-0"

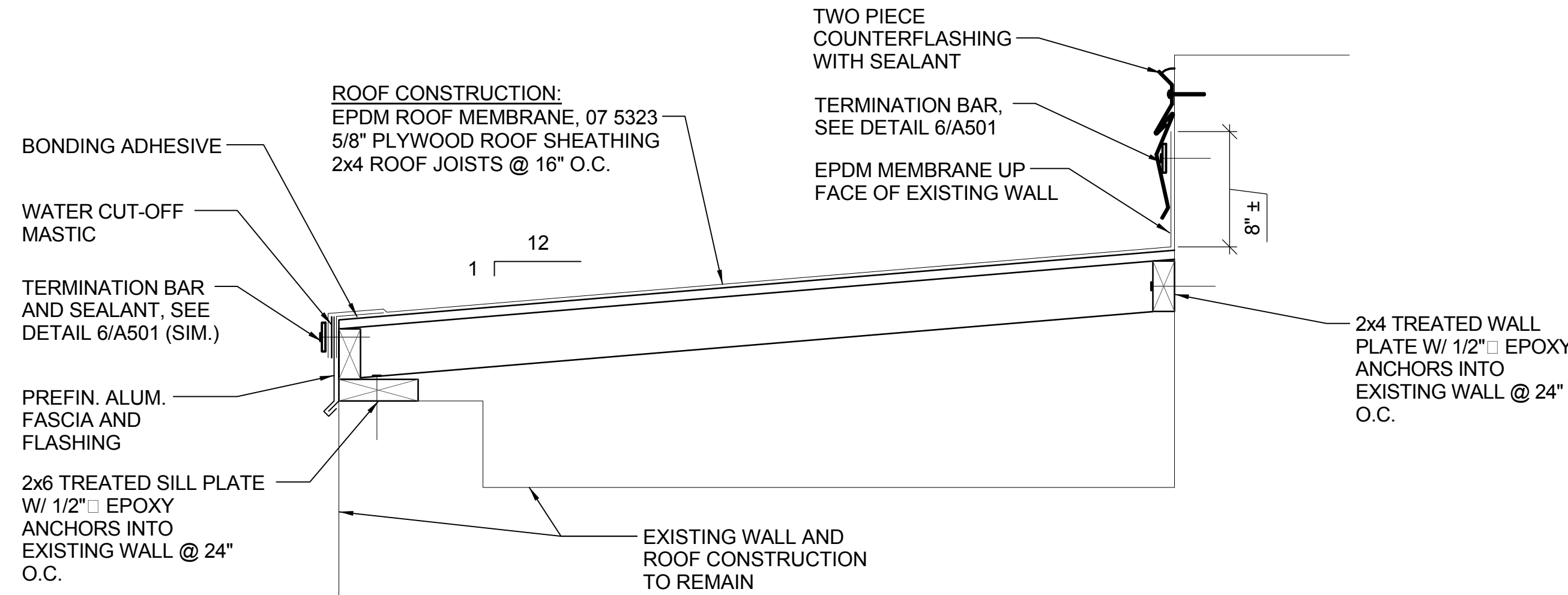
6 FRAMING DETAIL

SCALE: 1 1/2" = 1'-0"



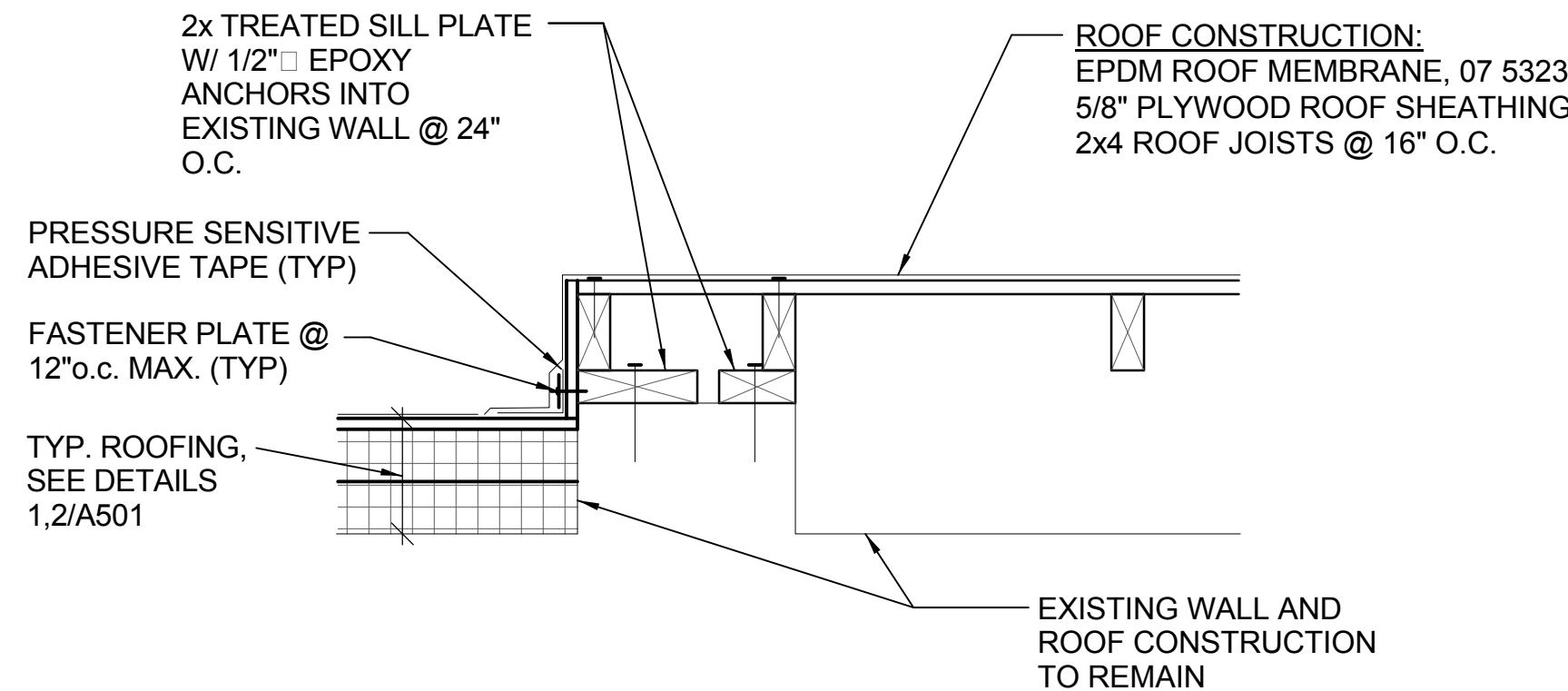
3 FIXED LADDER DETAILS

SCALE: 1/2" = 1'-0"



7 ROOF OVERBUILD DETAIL

SCALE: 1 1/2" = 1'-0"



8 FRAMING DETAIL

SCALE: 1 1/2" = 1'-0"

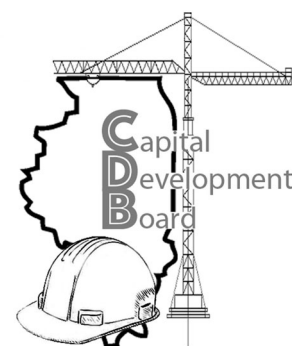
NOTE: CONTRACTOR SHALL OBTAIN AND VERIFY ALL DIMENSIONS AND CONDITIONS AT JOB SITE AND BE FULLY RESPONSIBLE FOR SAME.

REVISIONS			DRAWN	PREPARED		ARCHITECT OF RECORD:	CONSULTING ARCHITECT:
NO.	DATE	REMARKS					
			PTW			ARCHITECHNICS	EVANS CONSULTING SERVICES
			TRACED	APPROVED		510 MAINE STREET, 10TH FLOOR	10891 CONESTOGA DRIVE
						QUINCY, IL 62301	GLENARM, IL 62536
			CHECKED	APPROVED		CONSULTING ENGINEER:	
			PTW			FUHRMANN ENGINEERING	
						2852 SOUTH 11TH STREET	
						SPRINGFIELD, IL 62703	

			PTW			ARCHITECT OF RECORD:	CONSULTING ARCHITECT:
			TRACED	APPROVED		ARCHITECHNICS	EVANS CONSULTING SERVICES
						510 MAINE STREET, 10TH FLOOR	10891 CONESTOGA DRIVE
						QUINCY, IL 62301	GLENARM, IL 62536
			CHECKED	APPROVED		CONSULTING ENGINEER:	
			PTW			FUHRMANN ENGINEERING	
						2852 SOUTH 11TH STREET	
						SPRINGFIELD, IL 62703	

			PTW			ARCHITECT OF RECORD:	CONSULTING ARCHITECT:
			TRACED	APPROVED		ARCHITECHNICS	EVANS CONSULTING SERVICES
						510 MAINE STREET, 10TH FLOOR	10891 CONESTOGA DRIVE
						QUINCY, IL 62301	GLENARM, IL 62536
			CHECKED	APPROVED		CONSULTING ENGINEER:	
			PTW			FUHRMANN ENGINEERING	
						2852 SOUTH 11TH STREET	
						SPRINGFIELD, IL 62703	

			PTW			ARCHITECT OF RECORD:	CONSULTING ARCHITECT:
			TRACED	APPROVED		ARCHITECHNICS	EVANS CONSULTING SERVICES
						510 MAINE STREET, 10TH FLOOR	10891 CONESTOGA DRIVE
						QUINCY, IL 62301	GLENARM, IL 62536
			CHECKED	APPROVED		CONSULTING ENGINEER:	
			PTW			FUHRMANN ENGINEERING	
						2852 SOUTH 11TH STREET	
						SPRINGFIELD, IL 62703	



State of Illinois
JB PRITZKER, GOVERNOR
Illinois Capital Development Board

ROOFING DETAILS

REPAIR AND REPLACE ROOFS - PHASE I
ILLINOIS BOARD OF HIGHER EDUCATION
WESTERN ILLINOIS UNIVERSITY
MACOMB, McDONOUGH COUNTY

PROJECT NO.	818-010-103
DATE	07/05/19
SHEET NO.	A502
OF (9) SHEETS	