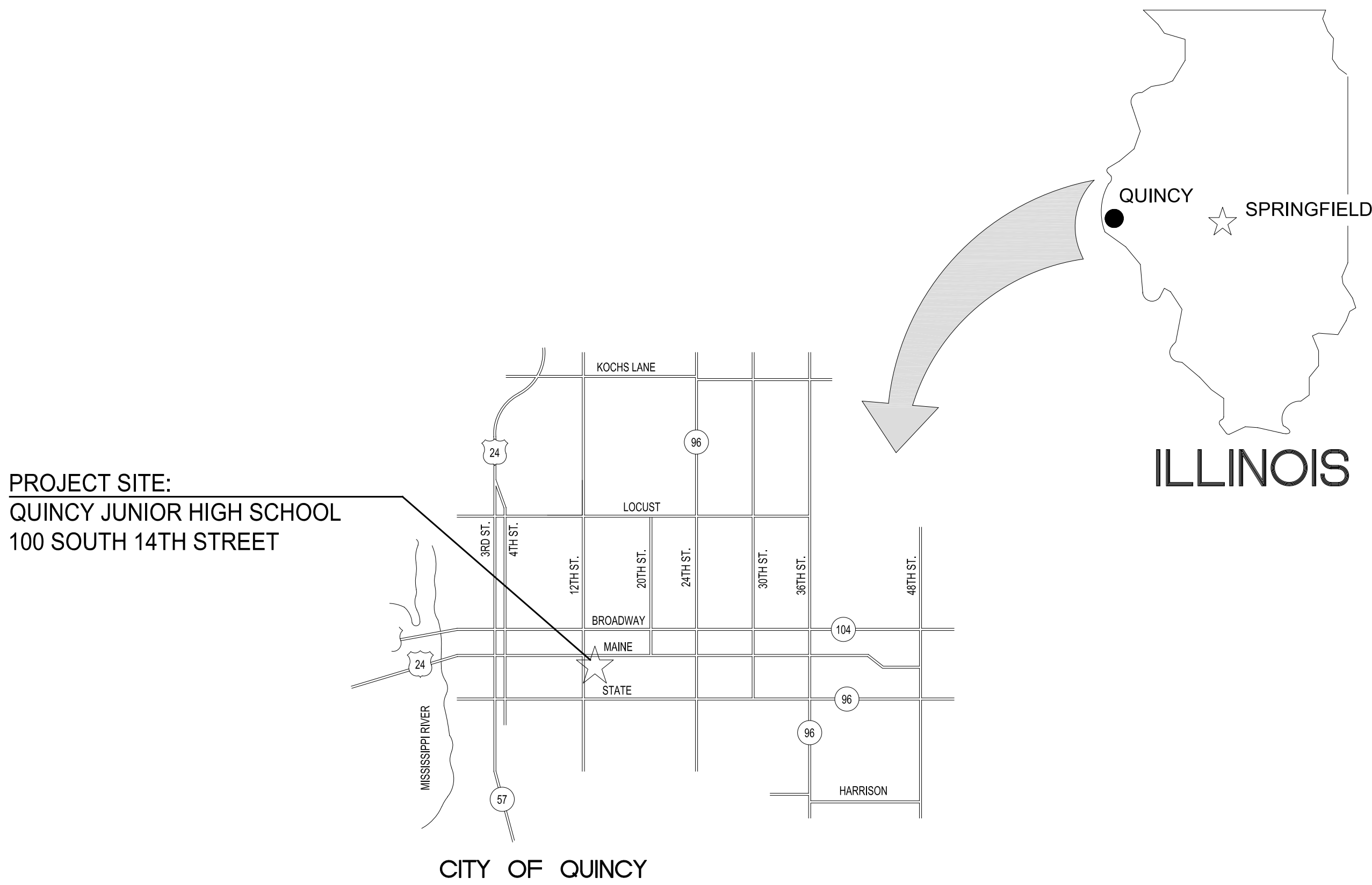


HEALTH LIFE SAFETY WORK:
PIPING REPLACEMENT AT: QUINCY JUNIOR HIGH SCHOOL
QUINCY PUBLIC SCHOOL DISTRICT #172

100 SOUTH 14TH STREET, QUINCY, ILLINOIS



AREA LOCATION - MAP



GENERAL NOTES

- CONTRACTOR TO VERIFY ALL DIMENSIONS.
- ANY DISCREPANCIES BETWEEN STATED AND EXISTING CONDITIONS SHALL BE REPORTED IMMEDIATELY TO THE ARCHITECT.
- DISCREPANCIES OR CONFLICTS BETWEEN SPECIFICATIONS AND DRAWINGS SHALL BE MADE KNOWN TO THE ARCHITECT FOR CLARIFICATION.
- THE CONTRACTOR SHALL BE RESPONSIBLE FOR PROTECTING THOSE AREAS TO REMAIN UNDISTURBED DURING CONSTRUCTION.
- THE CONTRACTOR SHALL TAKE NECESSARY PRECAUTIONS, TO MAINTAIN SAFETY AT THE CONSTRUCTION SITE, AND HE IS SOLELY RESPONSIBLE FOR SAFETY MEASURES. THE CONTRACTOR IS ALSO SOLELY RESPONSIBLE FOR CONSTRUCTION MEANS, METHODS, AND TECHNIQUES REGARDING EXECUTION OF THE WORK.
- THE CONTRACTOR SHALL CONFORM TO ALL LOCAL AND STATE CODES AND RECEIVE LOCAL AND STATE APPROVAL WHERE NECESSARY PRIOR TO CONSTRUCTION.
- THE CONTRACTOR SHALL GIVE ALL NECESSARY NOTICES AND OBTAIN ALL PERMITS AND PAY ALL LEGAL FEES. HE SHALL ALSO COMPLY WITH ALL CITY, COUNTY, AND STATE BUILDING LAWS, ORDINANCES, OR REGULATIONS.
- THE CONTRACTOR SHALL BE RESPONSIBLE FOR ANY DAMAGE DONE TO THE PREMISES OR ADJACENT PREMISES, OR INJURIES TO THE PUBLIC DURING THE CONSTRUCTION OF THE WORK, CAUSED BY HIMSELF, HIS SUBCONTRACTOR, OR THE CARELESSNESS OF ANY OF HIS EMPLOYEES.
- THE CONTRACTOR MUST UNDERSTAND THAT THE WORK IS ENTIRELY AT HIS RISK UNTIL SAME IS ACCEPTED, AND HE WILL BE HELD RESPONSIBLE FOR ITS SAFETY.
- THE CONTRACTOR SHALL FURNISH AND INSTALL ALL NECESSARY TEMPORARY WORKS FOR THE PROTECTION OF THE WORK, INCLUDING BARRICADES, WARNING SIGNS, LIGHTS, ETC.
- THE CONTRACTOR SHALL PROVIDE THE ARCHITECT WITH ONE SET OF PRINTS MARKED WITH ANY CHANGES FROM ORIGINAL CONTRACT DOCUMENTS.

MATERIALS

	PROPERTY CORNER
	EXISTING CONTOUR
	NEW CONTOUR
	EARTH
	CRUSHED ROCK
	CONCRETE
	FACE BRICK
	CONCRETE BLOCK
	PARTITION, SEE CODE
	DIMENSION LUMBER
	FINISH LUMBER
	GYPSON WALLBOARD
	PLYWOOD
	BATT INSULATION
	METALS

ABBREVIATIONS

ABV	ABOVE	DWG	DRAWING	M.A.U.	MAKEUP AIR UNIT	SECT.	SECTION
A.F.F.	ABOVE FINISHED FLOOR	D.F.	DRINKING FOUNTAIN	M.H.	MANHOLE	SHT.	SHEET
ADDN.	ADDITION	EA.	EACH	MFGR.	MANUFACTURER	SIM.	SIMILAR
A.C.	AIR CONDITIONING	E.W.	EACH WAY	M.T.	MARBLE TILE	S.C.	SOLID CORE
A.H.U.	AIR HANDLING UNIT	E.M.R.	ELASTOMERIC MEMBRANE	M.K.	MARK	SPEC.	SPECIFICATION
ALT	ALTERNATE		ROOFING	M.O.	MASONRY OPENING	S.& V.	STAIN AND VARNISH
ALUM	ALUMINUM	ELEC.	ELECTRIC	MATL.	MATERIAL	S.S.	STAINLESS STEEL
A.D.A.	AMERICANS WITH DISABILITIES ACT	E.P.	ELECTRIC PANELBOARD	MECH.	MECHANICAL	STD.	STANDARD
		ELEV.	ELEVATOR	MET.	METAL	STL.	STEEL
ANCS.	ANCHORS	ELEV.	ELEVATOR	MIN.	MINIMUM	STOR.	STORAGE
AUTO.	AUTOMATIC	EXH.	EXHAUST	MISC.	MISCELLANEOUS	ST. S.	STORM SEWER
BM.	BEAM	E.F.	EXHAUST FAN	M.R.	MOISTURE RESISTANT	S.G.T.	STRUCTURAL GLAZED TILE
BRG.	BEARING	EXIST	EXISTING	MTD.	MOUNTED		
BTUM.	BITUMINOUS	E. J.	EXPANSION JOINT	N.D.	NAPKIN DISPENSER	S.A.P.	SUSPENDED ACOUSTICAL PANELS
BLK'G.	BLOCKING	EXT	EXTERIOR	N.I.C.	NOT IN CONTRACT		
BLDG	BUILDING	E.I.F.S.	EXTERIOR INSULATION FINISH SYSTEM	N.O.	NOMINAL	T. & S.	TAPE AND SAND
BD.	BOARD	F.W.C.	FABRIC WALL COVERING	NOM.	NUMBER	T.D.D.	TELECOMMUNICATIONS
BTM.	BOTTOM	F.V.	FIELD VERIFY	OFF.	OFFICE		
B.P.	BRICK PAVERS	FIN.	FINISH	O.C.	ON CENTER		DEVICE FOR DEAF
BLDG.	BUILDING	F.V.	FINISH	OPG.	OPENING	T.G.	TEMPERED GLASS
BUR	BUILT-UP ROOF	F.E.C.	FIRE EXTINGUISHER	OPP. HND.	OPPOSITE HAND	T.R.G.	TEMPERED REFLECTIVE GLASS
CA	CARPET	FIX.	CABINET	OH.	OVERHEAD		
C.I.	CAST IRON	FL.	FLOOR	PT.	POINT	TZ.	TERRAZZO
CAT	CATALOG	F.D.	FLOOR DRAIN	PR.	PAIR	T.T.	TERRAZZO TILE
CLG.	CEILING	F.F.	FLUORESCENT	PARTN.	PARTITION	TH.	THICK/THICKNESS
C.T.	CERAMIC TILE	FLOOR.	FLOOR	PERF.	PERFORATED	THOLD	THRESHOLD
C.W.B.	CERAMIC WALL BASE	FTG.	FOOTING	P.D.	PRESSURE DROP	T.P.	TOILET PAPER
C.B.	CHALK BOARD	FND.	FOUNDATION	PLAS.	PLASTIC	T. & G.	TONGUE AND GROOVE
CLOS.	CLOSET	G.P.M.	GALLONS PER MINUTE	P.S.	PLUMBING STACK	T. & B.	TOP AND BOTTOM
C.O.	CLEAN OUT	GALV.	GALVANIZED	P.V.	PLUMBING VENT	TRANS.	TRANSITION
CO.	COMPANY	GA.	GAUGE	PLYWD.	PLYWOOD	T.	TREADS
COMP.	COMPOSITION	G.W.T.	GLAZED WALL TILE	P.W.C.	POLYVINYL CHLORIDE	TYP.	TYPICAL
CONC.	CONCRETE	G.B.	GRAB BAR	P.S.F.	POUNDS PER SQUARE FOOT	U.L.	UNDERWRITERS
C.M.U.	CONCRETE MASONRY UNIT	G.F.B.	GROUND FACE BRICK			UND.	UNDERLABORATORIES
		GYP. BD.	GYPSPUM WALLBOARD	PREFIN.	REFINISHED	U.N.O.	UNLESS NOTED
COND	CONDENSATION	H.D.	HARD HAND DRYER	PROJ. MAN.	PROJECT MANUAL		OTHERWISE
CONN.	CONNECTION	HC	HANDICAPPED	QTY.	QUANTITY	U.P.	UTILITY POLE
CONSTR.	CONSTRUCTION	HR.	HANDRAIL	Q.T.	QUARRY TILE	V.P.	VAPOR BARRIER
C.J.	CONSTRUCTION JOINT	HDWE.	HARDWARE	RAD.	RADIUS	VERT.	VERTICAL
CONT	CONTINUOUS	H.V.A.C.	HEATING, VENTILATING, & AIR CONDITIONING	RECEP.	RECEPTACLE	VEST.	VESTIBULE
CONTR.	CONTRACTOR	HT.	HEIGHT	REF.	REFERENCE	V.C.T.	VINYL COMPOSITION TILE
CORR.	CORRIDOR	H.C.	HOLLOW CORE	R.A.	RETURN AIR		
CNTR.	COUNTER	H.M.	HOLLOW METAL	R.H.	RIGHT HAND	V.W.C.	VINYL WALL COVERING
C.R.	CRUSHED ROCK	H.O.	HORIZONTAL	R.	RISERS	V.C.P.	VITRIFIED CLAY PIPE
C.F.M.	CUBIC FEET PER MINUTE	INC.	INCORPORATED	R.D.	ROOF DRAIN	W.C.	WATER CLOSET
		INSUL.	INSULATION	R.B.	RUBBER BASE	W.W.F.	WELDED WIRE FABRIC
		INSUL.G.	INSULATED GLASS	R.C.B.	RUBBER COVE BASE		
DEMO	DEMOLITION	JAN.	JANITOR	REQD.	REQUIRED	W.	WIDTH
DET	DETAIL	JNT.	JOINT	R.O.W.	RIGHT OF WAY	WDW.	WINDOW
DI.	DIAMETER	JM.	JOINT FILLER	R.	ROOM	W.G.	WIRE GLASS
DIM.	DIMENSION	J.F.	JOINT FILLER	R.I.	ROUGH IN	W/	WITH
DISP.	DISPENSER	JST.	JOIST	R.O.	ROUGH OPENING	W/O	WITH OUT
DIV.	DIVISION	J.B.	JUNCTION BOX	R.S.T.	RUBBER STAR TREAD	WD.	WOOD
DOOR	DOOR	LAM.	LAMINATE	R.T.	RUBBER TILE	T.	TREADS
DBL	DOUBLE	LAV.	LAVATORY	SAN.	SANITARY (SEWER)	TYP.	TYPICAL
D.S.	DOWNSPOUT	L.H.	LEFT HAND	SCHED.	SCHEDULE	U.L.	UNDERWRITERS
		L.G.	LONG				

G1 COVER SHEET

P001 TUNNEL / BOILER ROOM PLUMBING PLAN
P101 FIRST FLOOR PLUMBING PLAN
P201 2ND, 3RD, 4TH FLOOR PLUMBING PLANS

A.D.A. COMPLIANCE

THIS PROJECT SHALL BE IN COMPLIANCE WITH GUIDELINES OF THE AMERICANS WITH DISABILITIES ACT (A.D.A.)

AMERICANS WITH DISABILITIES ACT (A.D.A.)

ARCHITECTNICS, TO THE BEST OF ITS ABILITY, HAS EXERCISED PROFESSIONAL EFFORTS TO INTERPRET THE INTENT OF THE "AMERICANS WITH DISABILITIES ACT", AND OTHER APPLICABLE FEDERAL, STATE AND LOCAL CODES AND REQUIREMENTS. ARCHITECTNICS CANNOT GUARANTEE TOTAL COMPLIANCE WITH ANY WORK DIRECTLY RELATED TO THE A.D.A. WHEN THE OWNER PERFORMS AND/OR AUTHORIZES WORK USING THESE DOCUMENTS AND/OR DRAWINGS.

CURRENT DATE: XIX/2020



LICENSE EXPIRES: 11/30/21

HEALTH LIFE SAFETY WORK:
PIPING REPLACEMENT AT: QUINCY JUNIOR HIGH SCHOOL
QUINCY PUBLIC SCHOOL DISTRICT #172
100 SOUTH 14TH STREET, QUINCY, ILLINOIS

CONSTRUCTION
DOCUMENT
PHASE

NOT FOR
CONSTRUCTION

ISSUE DATE: 3/20/2020

REVISIONS

PROJECT NUMBER: 5880

COVER SHEET

DWG. NO.

G101

1	EXTEND PIPING WITH ISOLATION VALVES AND CONNECT TO EXISTING PIPING THRU WALL. SEE PLAN FOR SIZES.	6	EXTEND 1" CW PIPING WITH ISOLATION VALVE TO NEW WS-1 AND BYPASS VALVES AND PIPING TO MATCH EXISTING. CONNECT TO EXISTING POWER CIRCUIT. CONNECT TO EXISTING 1" PIPING TO BOILERS.	10	EXTEND NEW 1-1/2" CW, 1" HW, 3/4" HWR PIPING TO SERVE EXISTING WATER CLOSET AND SINK.
2	DEMO EXISTING PIPING SHOWN DASHED. NO NEW PIPING	7	EXTEND 3/4" CW PIPING WITH ISOLATION VALVE TO EXISTING RPZ VALVE.	11	EXTEND NEW 3/4" CW, HW WITH ISOLATION VALVES TO NEW F-2 ON COLUMN.
3	DEMO ALL EXISTING ABANDONED OVERHEAD PNEUMATIC PIPING IN PUMP ROOM AND UP TO TRANSFORMER ROOM	8	EXTEND 3/4" CW PIPING WITH ISOLATION VALVE TO EXISTING HYDRONIC LOOP TREATMENT SYSTEM.	12	COMPLETELY REMOVE EXISTING HOT WATER STORAGE TANKS AND ASSOCIATED PIPING SHOWN DASHED.
4	DEMO EXISTING HOSE BIB. NO NEW PIPING	9	EXTEND 1" PIPING WITH ANTISIPHON VALVE DOWN ON COLUMN AND CONNECT TO EXISTING HOSE QUICK CONNECTION FITTING.	13	COMPLETELY REMOVE EXISTING HOT WATER BOILERS AND ASSOCIATED PIPING SHOWN DASHED.
5	DEMO EXISTING 4" CW, 3" HW, 3/4" HWR PIPING TO BOILER ROOM. INSTALL NEW 2" CW, 1-1/2" HW, 3/4" HWR TO BOILER ROOM AS SHOWN.			14	COMPLETELY REMOVE EXISTING HOT WATER BOILER VENTS PIPING SHOWN DASHED TO EXISTING CHIMNEY AND CAF.
				15	EXTEND NEW 1-1/2" GAS PIPING FROM EXISTING MAIN TO NEW WATER HEATERS IN PUMP ROOM.



P001-3 - WATER HEATER DETAIL

P001-1 - ENLARGED BOILER ROOM PLUMBING PLAN

P001-2 - ENLARGED PUMP ROOM PLUMBING PLAN

ARCHITECTNICS
architects • engineers • interior designers
510 Maine Street, Quincy, IL 62301 • 217-822-0554 • info@architectnics.com

PIPING REPLACEMENT AT: QUINCY JUNIOR HIGH SCHOOL
QUINCY PUBLIC SCHOOL DISTRICT #172
 100 SOUTH 14TH STREET, QUINCY, ILLINOIS

**INSTRUCTION
DOCUMENT
PHASE**

NOT FOR INSTRUCTION

DATE:	3/20/2020
REVISIONS	

PROJECT NUMBER: 5880

**TUNNEL/
BOILER
ROOM
PLUMBING
PLAN**

VG. NO.

P001

PLUMBING NOTES

- 1

EXTEND NEW 3/4" CW, HW PIPING EXPOSED ON WALL TO SERVE SINK
- 2

EXTEND 1-1/4" CW EXPOSED ON WALL TO SERVE NEW WC-1
- 3

REPLACE EXISTING EXPOSED CAST IRON NIPPLE TO EX. WATER CLOSET WITH NEW COPPER PIPING
- 4

DEMO EXISTING PIPING SHOWN DASHED. NO NEW PIPING
- 5

EXTEND NEW 3/4" CW, HW FROM NEW VALVES TO SERVE EXISTING CAN WASHER, NEW MF-1, AND CHEMICAL DISPENSER. EXTEND ON TO NEW CWC-1
- 6

EXTEND 3/4" CW PIPING WITH ISOLATION VALVE TO SERVE NEW FFH-1. VERIFY EXIST. WALL HOLE SIZE AND STEM LENGTH AND CORE DRILL LARGER HOLE IF REQUIRED.
- 7

EXTEND 1-1/2" CW, HW PIPING DOWN EXPOSED ON WALL. EXTEND 3/4" WITH ISOLATION VALVE AND SS BRAIDED HOSE TO FILTER. CONTINUE 1" CW, HW LOW ON WALL TO SERVE ADDITIONAL FIXTURES
- 8

EXTEND 1/2" CW, HW PIPING WITH ISOLATION VALVES AND SS BRAIDED HOSE TO SKILLET FAUCET.
- 9

EXTEND PIPING WITH ISOLATION VALVES AND CONNECT TO EXISTING PIPING THRU WALL. SEE PLAN FOR SIZES.
- 10

DEMO EXISTING PIPING TO ABANDONED SINK.
- 11

EXTEND 3/4" CW, HW TO NEW CWC-1.
- 12

EXTEND 1/2" CW, HW TO EXISTING SHOWER PIPING
- 13

EXTEND NEW 1-1/2" CW PIPING TO SERVE EXISTING WATER CLOSET.
- 14

EXTEND NEW 3/4" CW, HW PIPING AND CONNECT TO NEW F-1.
- 15

EXTEND NEW 1/2" CW PIPING WITH ISOLATION VALVES TO SERVE FILTER AND ICE MAKER
- 16

EXTEND NEW 1/2" CW PIPING WITH ISOLATION VALVE AND SS BRAIDED HOSE TO COFFEE MAKER
- 17

EXTEND 4" CW PIPING AND CONNECT TO EXISTING 4" VALVE
- 18

EXTEND 1" HWR PIPING AND CONNECT TO EXISTING PIPING UP THROUGH CEILING.
- 19

EXTEND 1-1/2" HWR PIPING AND CONNECT TO EXISTING PIPING UP THROUGH CEILING.
- 20

EXTEND 3/4" CW PIPING WITH HAPPER ARRESTOR AND CONNECT TO SPRAY RINSE AND GARBAGE DISPOSER
- 21

EXTEND 1" CW, HW PIPING WITH HAMMER ARRESTORS AND CONNECT TO BOOSTER HEATER AND CMA MODEL 66 DISHWASHER CONNECTIONS.
- 22

EXTEND 2" CW PIPING DOWN IN CHASE, 1-1/2" DOWN TO TUNNEL BELOW.
- 23

EXTEND 1" CW PIPING THRU WALL AND CONNECT TO EXISTING WC.
- 24

INSTALL NEW 1-1/2" VALVE AT WATER HEATER
- 25

EXTEND 1/2 CW, HW UP TO SINKS ABOVE.
- 26

EXTEND 1" CW UP TO FIXTURE ABOVE
- 27

EXTEND 1/2 CW, HW UP TO ABOVE.
- 28

EXTEND 1-1/2" CW PIPING OVER AND DOWN, CONTINUE 1" TO NEW WC-1.
- 29

EXTEND 1/2" CW,HW PIPING TO NEW L-1 RELOCATED AS SHOWN
- 30

EXTEND NEW 3/4" CW, HW PIPING TO NEW SH-1
- 31

NEW 4" CW VALVE
- 32

DEMO EXISTING LAVS. INSTALL NEW-6-1/2" DEEP X 62" LONG X 48" HIGH CHASE FRAMED WITH 2X6 AND WRAPPED IN DRYWALL AND FRP. INSTALL NEW WF-1 AND EXTEND NEW CW, HW, AND DRAIN PIPING AND CONNECT TO EXISTING. EXISTING DRAIN THRU WALL FROM ROOM 124 REMAINS. EXTEND NEW EXPOSED CONDUIT DOWN FROM RECEPTACLE ABOVE INTO CHASE TO NEW GFCI RECEPTACLE FOR WF-1.
- 33

COMPLETELY DEMO EXISTING EXPOSED SHOWER VALVES AND PIPING IN THIS ROOM.
- 34

EXTEND NEW ISOLATION VALVES IN CABINET AND REPLACE EXISTING SINK FAUCET WITH NEW F-3.
- 35

EXTEND VENT PIPING UP FROM WATER HEATERS BELOW UP TO MIN 9'-0" A.F.F. OFFSET OVER AND THROUGH EXTERIOR WALL. BUILD NEW CHASE AROUND PIPES FRAMED WITH 2X4 AND WRAPPED IN PLYWOOD AND FRP TO 8'-0" A.F.F. EXTEND CIRCUIT AND RELOCATE EXISTING SWITCH FROM COLUMN TO CHASE.
- 36

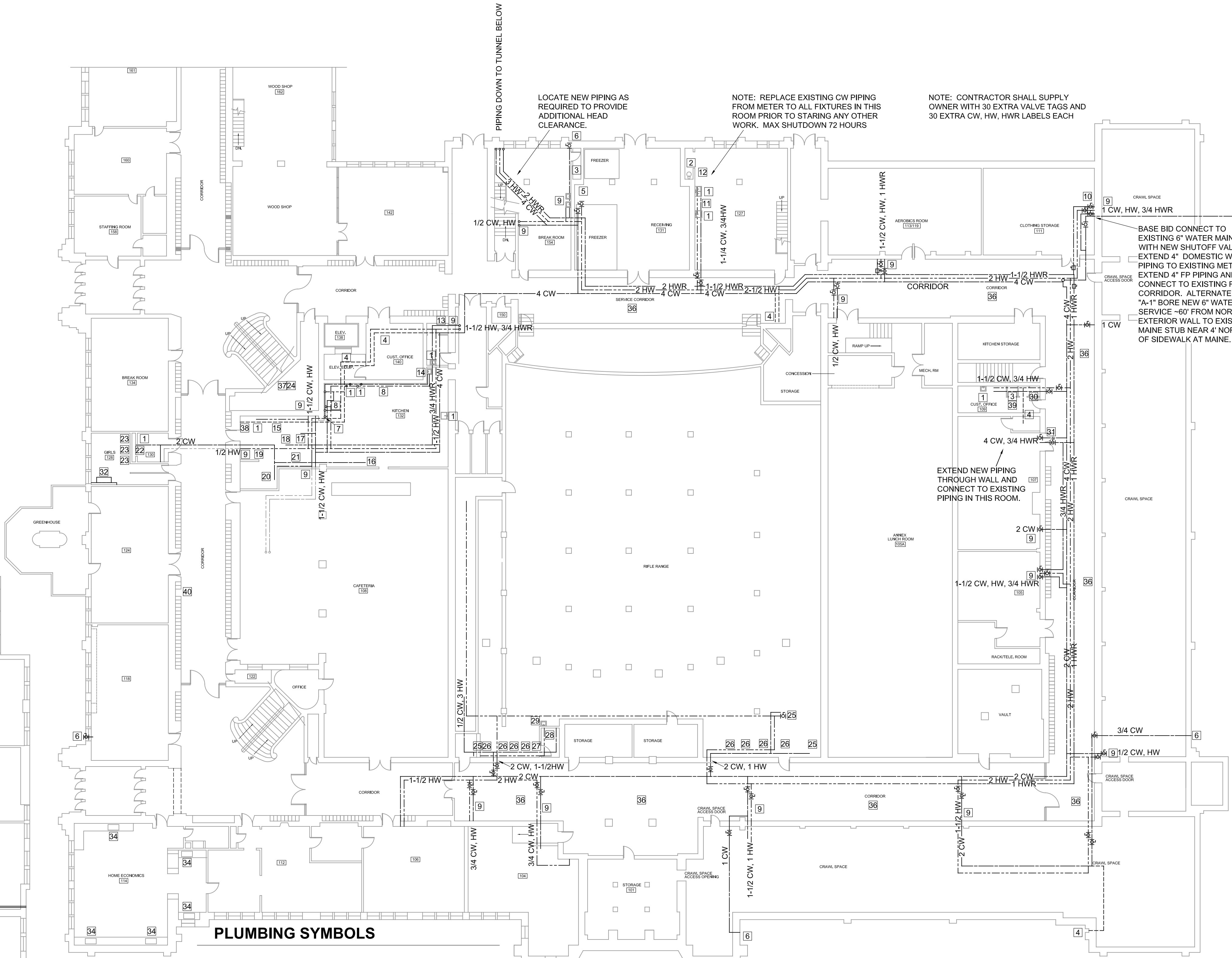
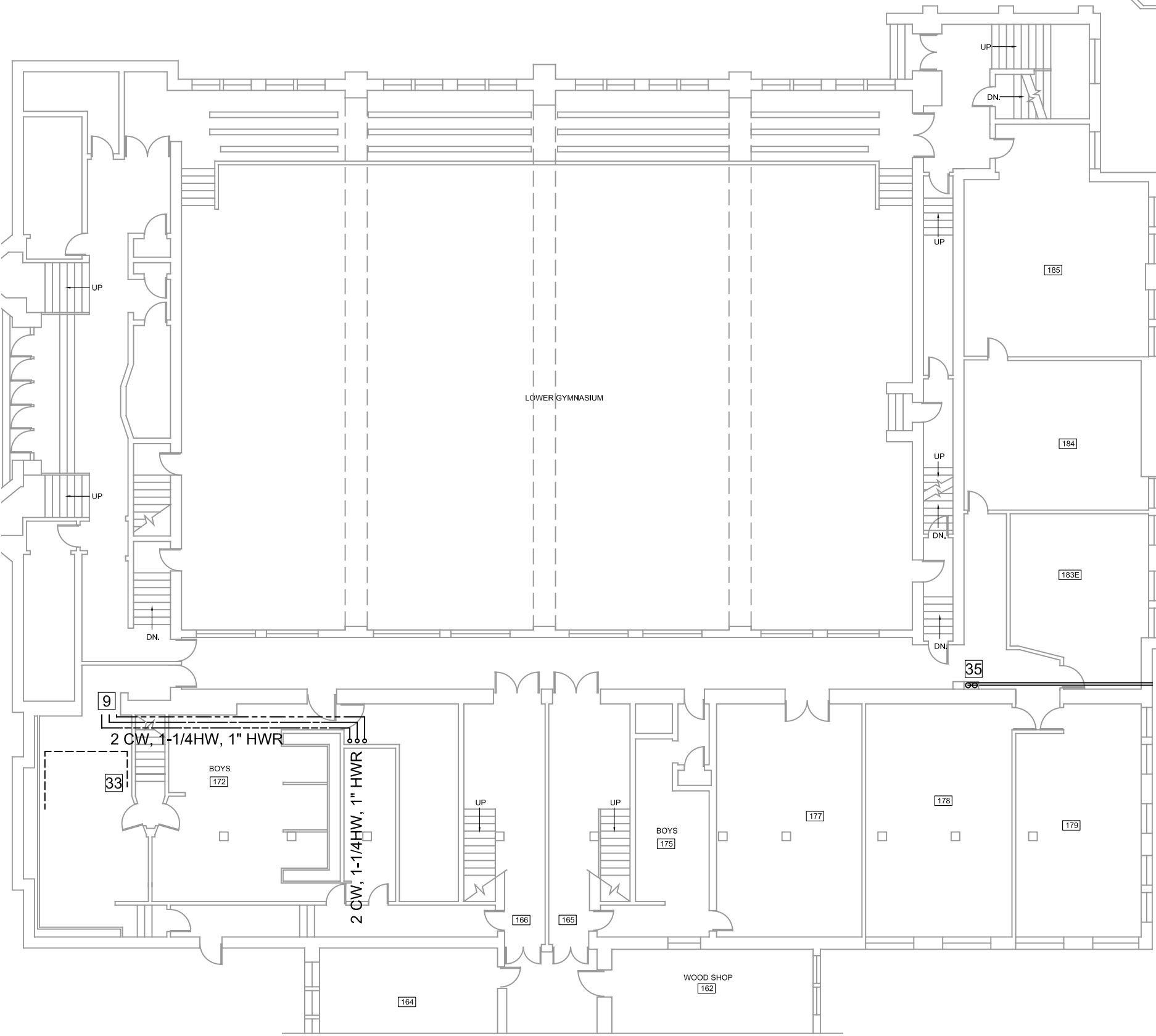
WHEN LABELING NEW DOMESTIC WATER PIPING LABEL ALL FP PIPING IN THIS CORRIDOR
- 37

INSTALL (2) NEW WH-2 AND CONNECT TO EXISTING PIPING AND POWER CIRCUIT.
- 38

DEMO EXISTING 4" CW PIPING SHOWN DASHED.
- 39

REPLACE EXISTING FLUSH VALVE WITH NEW FV-1
- 40

REMOVE EXISTING WATER COOLER AND INSTALL NEW EWC-1.



PLUMBING SYMBOLS

- DOMESTIC COLD WATER
- HOT WATER
- HOT WATER RECIRCULATION
- G-----

NATURAL GAS
- |-----

HAND VALVE (BALL)
- |-----

BALANCE VALVE

FIRST FLOOR PLUMBING PLAN

SCALE: 1/16" = 1'-0"



CURRENT DATE: XIX/2020

LICENSE EXPIRES: 11/30/21

HEALTH LIFE SAFETY WORK:
PIPING REPLACEMENT AT: QUINCY JUNIOR HIGH SCHOOL
QUINCY PUBLIC SCHOOL DISTRICT #172
100 SOUTH 14TH STREET, QUINCY, ILLINOIS

CONSTRUCTION
DOCUMENT
PHASE

NOT FOR
CONSTRUCTION

ISSUE DATE: 3/20/2020

REVISIONS

PROJECT NUMBER: 5880

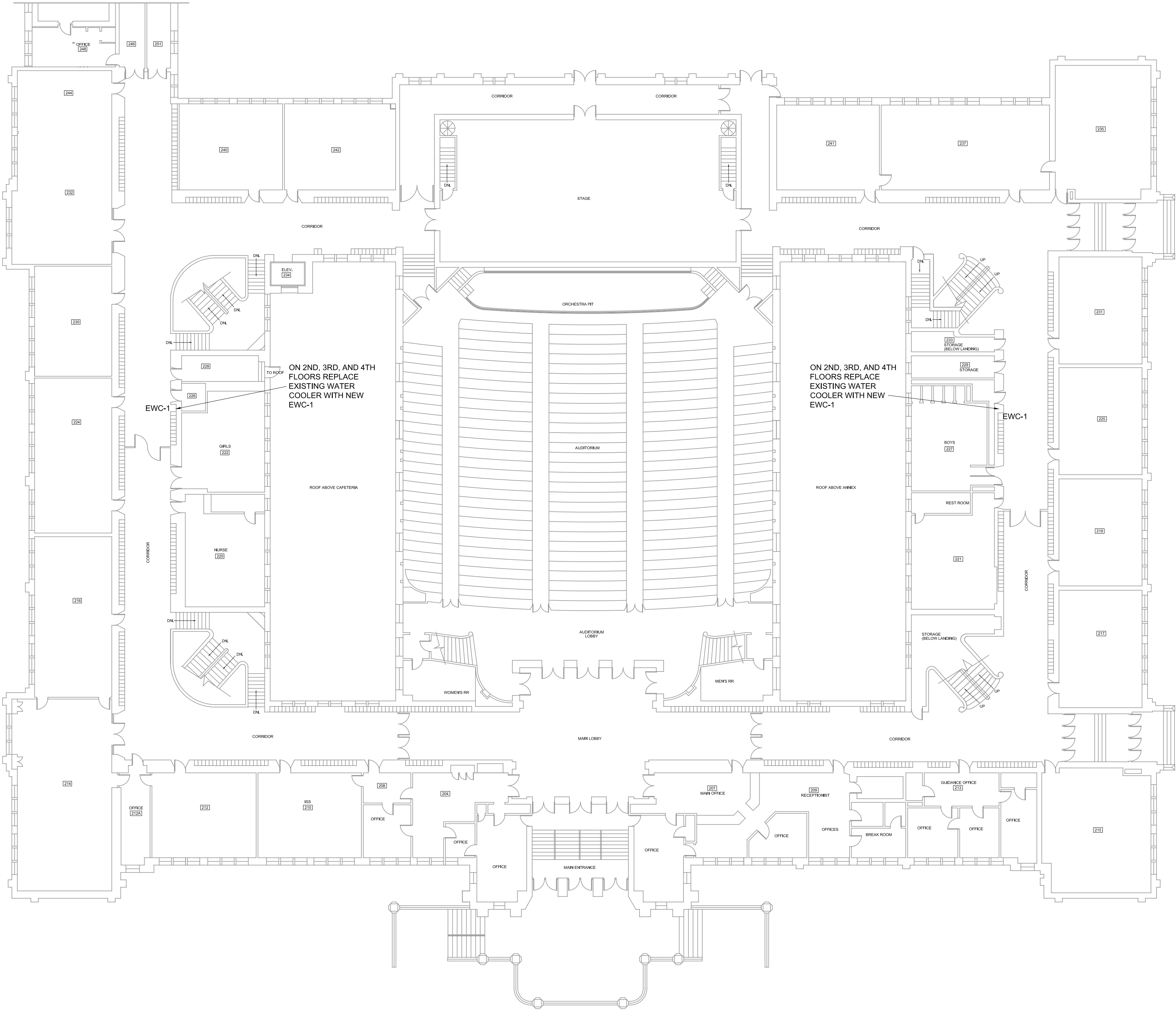
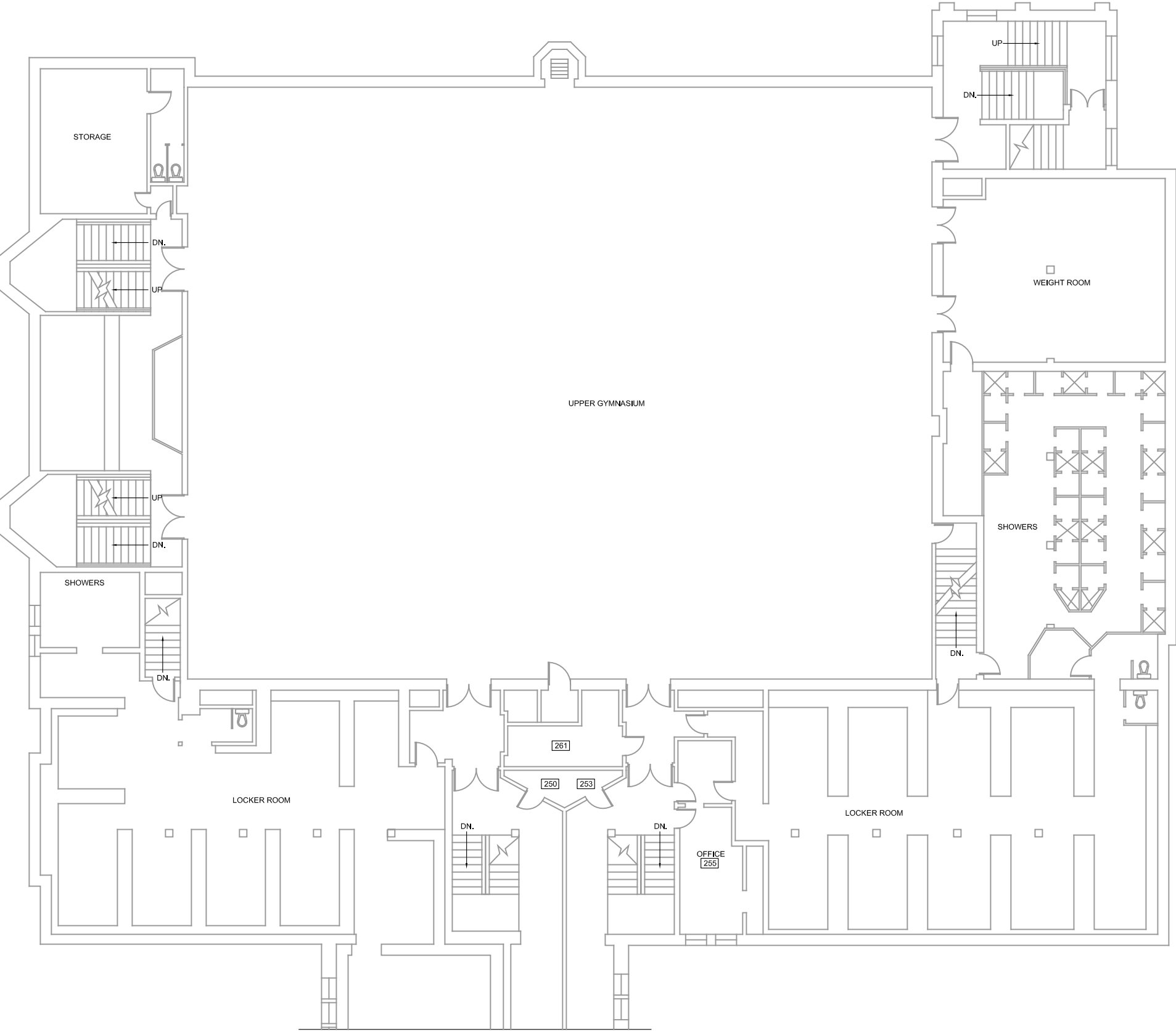
FIRST
FLOOR
PLUMBING
PLAN

DWG. NO.

P101

© ARCHITECHNICS INC.

PLUMBING FIXTURE SCHEDULE				
MK	FIXTURE /	MFGR	MODEL	NOTES / ACCESSORIES
WC-1	FLOOR MOUNTED WATER CLOSET - HANDICAP	KOHLER GERBER TOTO	K-4368 25-730 C1705L	10" ROUGH-IN; WHITE. FLUSH VALVE: ZURN #Z-6000 WS1WHITE, SEAT - BEAMIS #3155C OR APPROVED EQUAL
FV-1	FLUSH VALVE	ZURN	Z-6000 WS-1	VERIFY STEM LENGTH PRIOR TO SUBMITTING SHOP DWGS.
WF-1	WASH FOUNTAIN	BRADLEY	MF2949-JUV-IR-NSD-X-TMA	VANDAL RESISTANT. STAIN, BURN & IMPACT. RESISTANT. FRONT ACCESS PANEL IS REMOVABLE WITH A HEX KEY. ALL EQUIPMENT CONCEALED INSIDE PEDESTAL. COLOR BY ENGINEER
FPH-1	FROST PROOF HYDRANT	WOODFORD	MODEL 67	VERIFY WALL THICKNESS. WITH HEX KEY OPERATION
L-1	LAVATORY	KOHLER VORTENS TOTO	K-2196 3521V LT501	WHITE; FAUCET: CHICAGO FAUCET #3300-ABCP WITH GRID STRAINER (ADJUST TO (10) SECOND MAX FLOW); VERIFY FAUCET HOLES WITH LAV CONFIGURATION
F-1	FAUCET DRAIN	CHICAGO	631-E35RABCP	INSTALL ON EXISTING SINK. VERIFY COMPATIBILITY PRIOR TO SUBMITTING SHOP DWGS.
F-2	HOT/COLD HOSE FAUCET	CHICAGO	897 MP RCF	MOUNT TO COLUMN
F-3	KITCHEN FAUCET	CHICAGO	430-ABCP	SINGLE LEVER MIXING FAUCET
SH-1	SHOWER	BRADLEY WILLOUGHBY LEONARD	WS-1WCA CWSMS SS-PAM-204	WITH THERMOSTATIC MIXING VALVE, DELUXE SHOWERHEAD, SOAP DISH
WS-1	WATER SOFTENER	BRASSMASTER	B32	LOAD SYSTEM AND PROVIDE COMPLETE STOCK OF MEDIA FOR 1 RELOADING.
WH-1	WATER HEATER	NAVIEN	NPE-240	199 MBH, SUPPLY WITH ALL REQUIRED ACCESSORIES FOR COMBINED VENTING, ANTI-SCALE SYSTEM, GXXX001329 CONDENSATE NEUTRALIZATION KIT, WIFI LINK, AND CONTROLS AND CABLES FOR CONNECTING (5) TOTAL UNITS AND PROGRAM TO ACT AS ONE SYSTEM. INSTALL (1) AT EACH W2 PER MFGRS RECOMMENDATIONS.
ET-2	EXPANSION TANK	AMTROL	ST-2	208/SINGLE PHASE, (2) 4.5 KW ELEMENTS , 50 GAL STORAGE, EXTEND RELIEF TO FLOOR DRAIN. VERIFY POWER IS COMPATIBLE WITH EXISTING CIRCUIT PRIOR TO SUBMITTING SHOP DWGS.
ET-1	EXPANSION TANK	AMTROL	ST-80VC	COORDINATE LOCATION IN PUMP ROOM. SEE WATER HEATER DETAIL.
CWC-1	CLOTHES WASHER SUPPLY	WATTS	175C	MOUNT TO WALL.
EW-C1	WATER COOLER	WATTS	VRC8WSK	SINGLE UNIT, STAINLESS STEEL SHROUD, VANDAL RESISTANT, WITH BOTTLE FILLER
CIRC-1	CIRCULATOR	GRUNDFOS	ALPHA 2	



2ND, 3RD, 4TH FLOOR PLUMBING PLANS

SCALE: 1/16" = 1'-0"



CURRENT DATE: XIX/2020

LICENSE EXPIRES: 11/30/21

HEALTH LIFE SAFETY WORK:
PIPING REPLACEMENT AT: QUINCY JUNIOR HIGH SCHOOL
QUINCY PUBLIC SCHOOL DISTRICT #172
100 SOUTH 14TH STREET, QUINCY, ILLINOIS

CONSTRUCTION
DOCUMENT
PHASE

NOT FOR
CONSTRUCTION

ISSUE DATE: 3/20/2020

REVISIONS	

PROJECT NUMBER: 5880

2ND, 3RD, 4TH
FLOOR
PLUMBING
PLANS

DWG. NO.
P201