

SANITARY SEWER REPLACEMENT FOR:
MEREDOSIA-CHAMBERSBURG C.U.S.D. #11

830 MAIN STREET
MEREDOSIA, ILLINOIS

A.D.A. COMPLIANCE

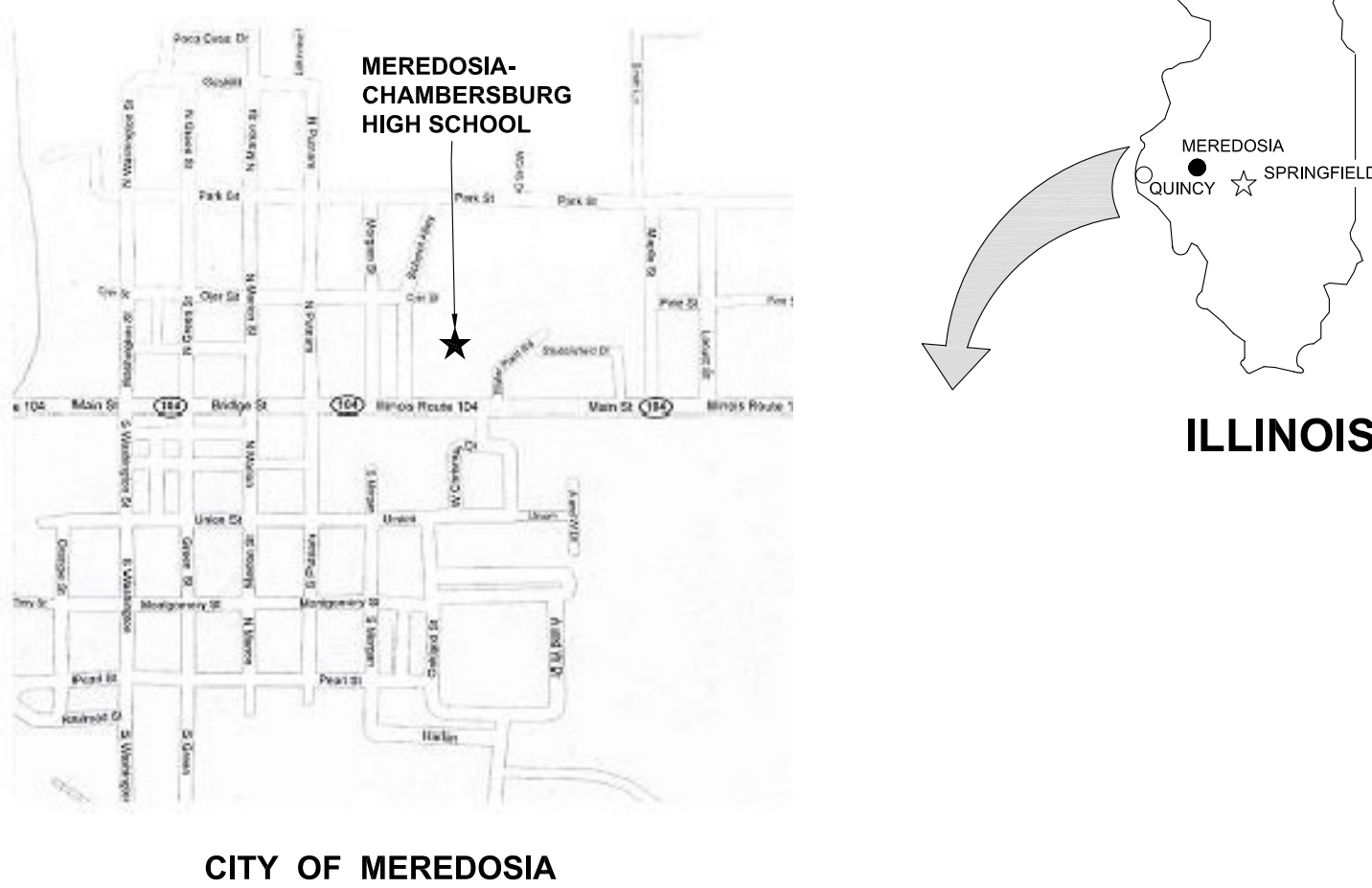
THIS PROJECT SHALL BE IN COMPLIANCE WITH GUIDELINES OF THE AMERICANS WITH DISABILITIES ACT (A.D.A.)

AMERICANS WITH DISABILITIES ACT (A.D.A.)

ARCHITECHNICS, TO THE BEST OF ITS ABILITY, HAS EXERCISED PROFESSIONAL EFFORTS TO INTERPRET THE INTENT OF THE "AMERICANS WITH DISABILITIES ACT", AND OTHER APPLICABLE FEDERAL, STATE AND LOCAL CODES AND REQUIREMENTS. ARCHITECHNICS CANNOT GUARANTEE TOTAL COMPLIANCE WITH ANY WORK DIRECTLY RELATED TO THE A.D.A., WHEN THE OWNER PERFORMS AND/OR AUTHORIZES WORK USING THESE DOCUMENTS AND/OR DRAWINGS.

GENERAL NOTES

- CONTRACTOR TO VERIFY ALL DIMENSIONS.
- ANY DISCREPANCIES BETWEEN STATED AND EXISTING CONDITIONS SHALL BE REPORTED IMMEDIATELY TO THE ARCHITECT.
- DISCREPANCIES OR CONFLICTS BETWEEN SPECIFICATIONS AND DRAWINGS SHALL BE MADE KNOWN TO THE ARCHITECT FOR CLARIFICATION.
- THE CONTRACTOR SHALL BE RESPONSIBLE FOR PROTECTING THOSE AREAS TO REMAIN UNDISTURBED DURING CONSTRUCTION.
- THE CONTRACTOR SHALL TAKE NECESSARY PRECAUTIONS, TO MAINTAIN SAFETY AT THE CONSTRUCTION SITE, AND HE IS SOLELY RESPONSIBLE FOR SAFETY MEASURES. THE CONTRACTOR IS ALSO SOLELY RESPONSIBLE FOR CONSTRUCTION MEANS, METHODS, AND TECHNIQUES REGARDING EXECUTION OF THE WORK.
- THE CONTRACTOR SHALL CONFORM TO ALL LOCAL AND STATE CODES AND RECEIVE LOCAL AND STATE APPROVAL WHERE NECESSARY PRIOR TO CONSTRUCTION.
- THE CONTRACTOR SHALL GIVE ALL NECESSARY NOTICES AND OBTAIN ALL PERMITS AND PAY ALL LEGAL FEES. HE SHALL ALSO COMPLY WITH ALL CITY, COUNTY, AND STATE BUILDING LAWS, ORDINANCES, OR REGULATIONS.
- THE CONTRACTOR SHALL BE RESPONSIBLE FOR ANY DAMAGE DONE TO THE PREMISES OR ADJACENT PREMISES, OR INJURIES TO THE PUBLIC DURING THE CONSTRUCTION OF THE WORK, CAUSED BY HIMSELF, HIS SUBCONTRACTOR, OR THE CARELESSNESS OF ANY OF HIS EMPLOYEES.
- THE CONTRACTOR MUST UNDERSTAND THAT THE WORK IS ENTIRELY AT HIS RISK UNTIL SAME IS ACCEPTED, AND HE WILL BE HELD RESPONSIBLE FOR ITS SAFETY.
- THE CONTRACTOR SHALL FURNISH AND INSTALL ALL NECESSARY TEMPORARY WORKS FOR THE PROTECTION OF THE WORK, INCLUDING BARRICADES, WARNING SIGNS, LIGHTS, ETC.
- THE CONTRACTOR SHALL PROVIDE THE ARCHITECT WITH ONE SET OF PRINTS MARKED WITH ANY CHANGES FROM ORIGINAL CONTRACT DOCUMENTS.



INDEX OF DRAWINGS

G001 COVER SHEET

C101 SITE PLAN

ABBREVIATIONS

ABV	ABOVE	EA	EACH	LG	LONG	SAN	SANITARY (SEWER)
A.F.F.	ABOVE FINISHED FLOOR	E.W.	EACH WAY	M.A.U.	MAKEUP AIR UNIT	SCHED.	SCHEDULE
ADDN.	ADDITION	E.M.R.	ELASTOMERIC MEMBRANE	M.H.	MANHOLE	SECT.	SECTION
A.C.	AIR CONDITIONING	ELEC.	ELECTRIC	MFR.	MANUFACTURER	SHT.	SHEET
A.H.U.	AIR HANDLING UNIT	E.P.	ELECTRIC PANEL BOARD	M.T.	MARBLE TILE	SM.	SIMILAR
ALT	ALTERNATE	E.W.C.	ELECTRIC WATER COOLER	MK	MARK	S.C.	SOLID CORE
ALUM	ALUMINUM	EL	ELEVATION	M.O.	MASONRY OPENING	SPEC.	SPECIFICATION
A.D.A.	AMERICANS WITH DISABILITIES ACT	ELEV.	ELEVATOR	MATL.	MATERIAL	S.S. V.	STAIN AND VARNISH
ANCS.	ANCHORS	EXH.	EXHAUST	MECH.	MECHANICAL	S.S.	STAINLESS STEEL
ATTEN	ATTENUATED	E.F.	EXHAUST FAN	MEMB	MEMBRANE	STD.	STANDARD
AUTO.	AUTOMATIC	EXIST	EXISTING	MTL.	METAL	STL.	STEEL
BM	BEAM	E.T.R.	EXISTING TO REMAIN	MIN.	MINIMUM	STOR.	STORAGE
BR'G.	BEARING	E. J.	EXPANSION JOINT	MISC.	MISCELLANEOUS	ST.	STORM (SEWER)
BTWN	BETWEEN	EXT	EXTERIOR	M.R.	MOISTURE RESISTANT	S.G.T.	STRUCTURAL GLAZED
BITUM.	BITUMINOUS	E.I.F.S.	EXTERIOR INSULATION FINISH SYSTEM	MTD.	MOUNTED		
BL'G.	BLOCKING	F.W.C.	FABRIC WALL COVERING	N.D.	NAPKIN DISPENSER	S.A.P.	SUSPENDED ACOUSTICAL
BD.	BOARD	F.V.	FIELD VERIFY	N.A.	NOT IN CONTRACT	T.B.	TACK BOARD
BTM.	BOTTOM	FIN.	FINISH	N.I.C.	NOT IN CONTRACT	T. & S.	TAPE AND SAND
B.P.	BRICK PAVERS	F.E.C.	FIRE EXTINGUISHER	NOM.	NOMINAL	T.D.D.	TELECOMMUNICATIONS
BLDG.	BUILDING	FIX.	FIXTURE	NO.	NUMBER		DEVICE FOR DEAF
BUR	BUILT-UP ROOF	FLR.	FLOOR	OFFC.	OFFICE	T.G.	TEMPERED GLASS
B.B.D.	BULLETTIN BOARD	F.D.	FLOOR DRAIN	O.C.	ON CENTER	T.R.G.	TEMPERED REFLECTIVE GLASS
CA.	CAST IRON	FL.	FLOW	OPG.	OPENING		
C.I.	CATALOG	F.TG.	FOOTING	OPP. HND.	OPPOSITE HAND	TZ.	TERRAZZO
CLG.	CEILING	FND.	FOUNDATION	PT.	PAINT	T.T.	TERRAZZO TILE
C.T.	CERAMIC TILE	G.F.M.	GALLONS PER MINUTE	PR.	PARTN.	TH/THK.	THICK/THICKNESS
C.W.B.	CHALK BOARD	GAUV.	GALVANIZED	PERF.	PERFORATED	THOLD	THRESHOLD
CLOS.	CLOSET	GA.	GAUGE	P.D.	PRESSURE DROP	T.P.	TOILET PAPER
C.O.	CLEAN OUT	G.W.T.	GLAZED WALL TILE	PLAS.	PLASTIC	T. & G.	TONGUE AND GROOVE
CO.	COMPANY	G.B.	GRAB BAR	P.S.	PLUMBING STACK	T. & B.	TOP AND BOTTOM
COMP.	COMPOSITION	G.F.B.	GROUND FACE BRICK	P.V.	PLUMBING VENT	TRANS.	TRANSITION
CONC	CONCRETE	GWB	GYPSUM WALLBOARD	P.V.WD.	PLYWOOD	T.	TREADS
C.M.U.	CONCRETE MASONRY UNIT	H.D.	HAIRHAND DRYER	P.I.	POINT OF INTERSECTION	TYP.	TYPICAL
COND	CONDENSATION	HC	HANDICAPPED	P.V.C.	POLYVINYL CHLORIDE	TING	TEMPERED TINTED GLASS
CONN.	CONNECTION	HR.	HANDICAPPED HANDRAIL	P.S.F.	POUNDS PER SQUARE FOOT	U.L.	UNDERWRITERS LABORATORIES
CONST.	CONSTRUCTION	HRD.	HARDENED	PREFIN.	PREFINISHED	U.N.O.	UNLESS NOTED OTHERWISE
C.J.	CONSTRUCTION JOINT	HOWE.	HARDWARE	PROJ. MAN.	PROJECT MANUAL	U.P.	UTILITY POLE
CONT	CONTINUOUS	H.V.A.C.	HEATING, VENTILATING, & AIR CONDITIONING	QTY.	QUANTITY	V.P.	VAPOR BARRIER
CONTR.	CONTRACTOR	HT.	HEIGHT	Q.T.B.	QUARRY TILE BASE	VERT.	VERTICAL
CORD	CORRUGATED	H.C.T.	HOLLOW CLAY TILE	RAD	RADIUS	VEST.	VESTIBULE
CORR.	CORRIDOR	H.M.	HOLLOW METAL	RECEP.	RECEPTACLE	V.C.T.	VINYL COMPOSITION TILE
CNTR.	COUNTER	HORIZ.	HORIZONTAL	REF.	REFERENCE	V.S.F.	VINYL SHEET FLOORING
C.R.	CRUSHED ROCK	I.A.C.	ILL. ACCESSIBILITY CODE	REINF.	REINFORCEMENT	V.W.F.	VINYL WALL FABRIC
C.F.M.	CUBIC FEET PER MINUTE	INC.	INCORPORATED	R.A.	RETURN AIR	V.C.P.	VITRIFIED CLAY PIPE
CTSG	CLEAR TEMPERED SAFETY GLASS	INSUL.	INSULATION	R.H.	RIGHT HAND	W.C.	WATER CLOSET
DEMO	DEMOLITION	INSUL.G.	INSULATED GLASS	R.	ROOF DRAIN	W.W.F.	WELDED WIRE FABRIC
DET	DETAIL	JAN.	JANITOR	R.D.	RUBBER BASE	W.BD.	WHITE BOARD
DIA	DIAMETER	JT.	JOINT	R.B.	RUBBER COVE BASE	W.	WIDTH
DISP.	DISPENSER	J.F.	JOINT FILLER	REQD.	REQUIRED	WDW.	WINDOW
DIV.	DIVISION	JST.	JOIST	R.O.W.	RIGHT OF WAY	WG.	WIRE GLASS
DR.	DOOR	J.B.	JUNCTION BOX	RM.	ROOM	W.	WITH
DBL	DOUBLE	LAM.	LAMINATE	R.I.	ROUGH IN	WO.	WITH OUT
D.S.	DOWN SPOUT	LAV.	LAVATORY	R.O.	ROUGH OPENING	WD.	WOOD
DWG	DRAWING			R.S.T.	RUBBER STAIR TREAD	T.	TREADS
DF	DRINKING FOUNTAIN			R.T.	RUBBER TILE	TYP.	TYPICAL
						U.L.	UNDERWRITERS
						U.N.O.	UNLESS NOTED OTHERWISE

MATERIALS

714	PROPERTY CORNER
714	EXISTING CONTOUR
714	NEW CONTOUR
714	EARTH
714	CRUSHED ROCK
714	CONCRETE
714	FACE BRICK
714	CONCRETE BLOCK
714	PARTITION, SEE CODE
714	DIMENSION LUMBER
714	FINISH LUMBER
714	GYPSUM WALLBOARD
714	PLYWOOD
714	BATT INSULATION
714	METALS

SANITARY SEWER REPLACEMENT FOR:
MEREDOSIA-CHAMBERSBURG CUSD #11
830 MAIN STREET MEREDOSIA, ILLINOIS

CONSTRUCTION
DOCUMENT
PHASE

ISSUE DATE: 04/21/2019

REVISIONS

NO.	Date	Description

PROJECT NUMBER: 5806

COVER
SHEET

DWG. NO.

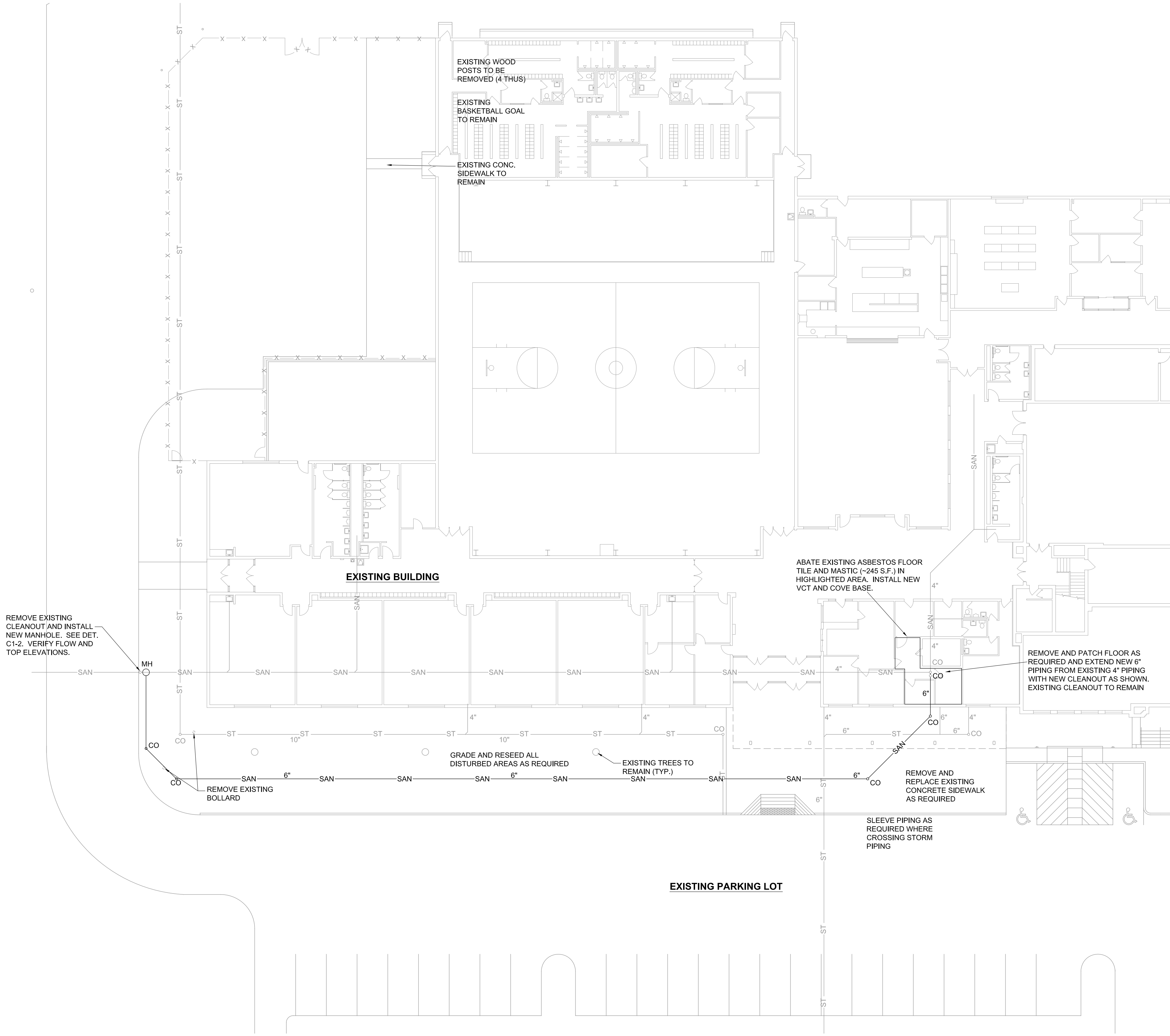
G001

ARCHITECHNICS
architects • engineers • interior designers
810 Main Street, Quincy, IL 62301 • 217-222-0554 • info@archtechinc.com

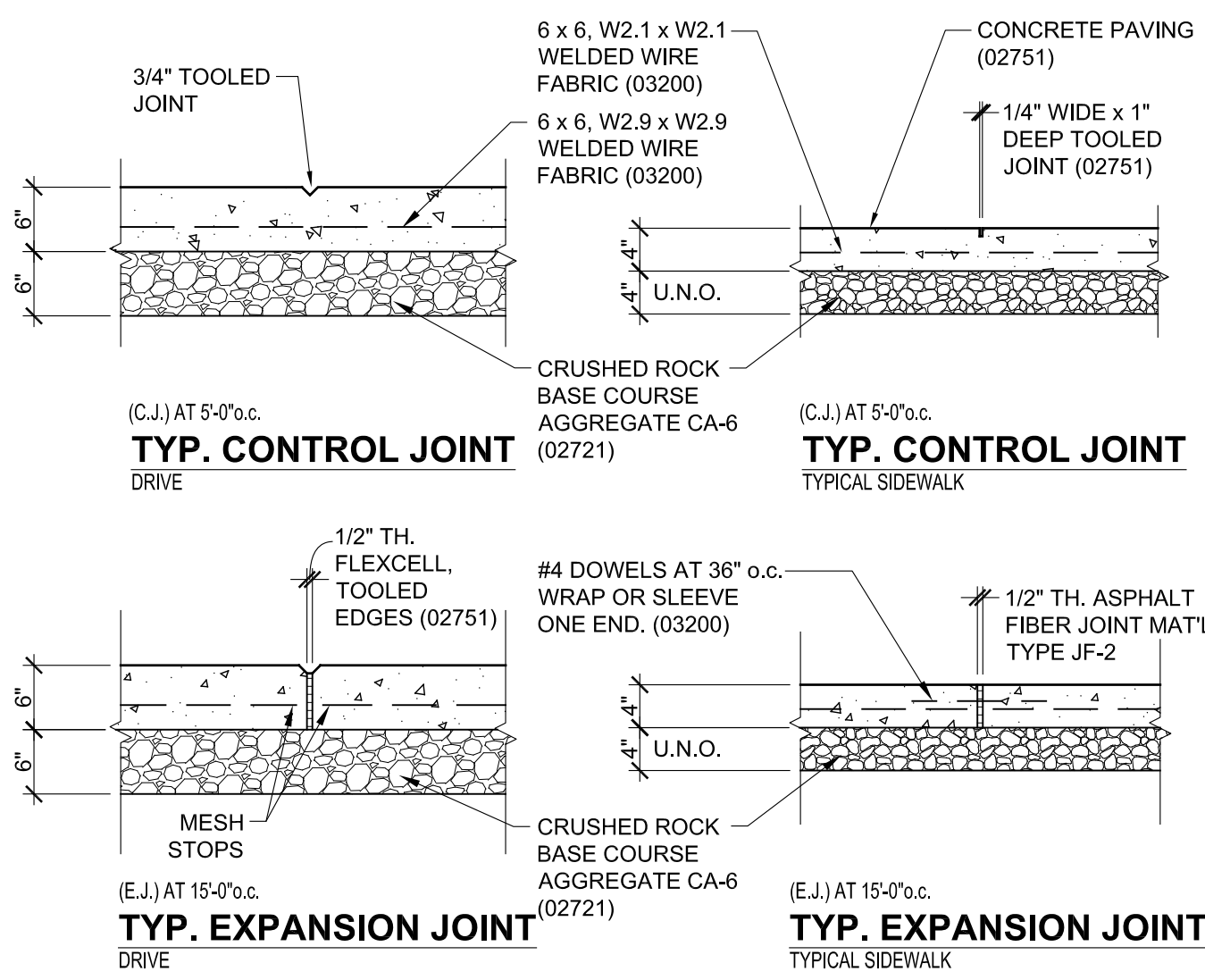
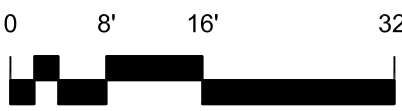
CURRENT DATE: 04/21/2019



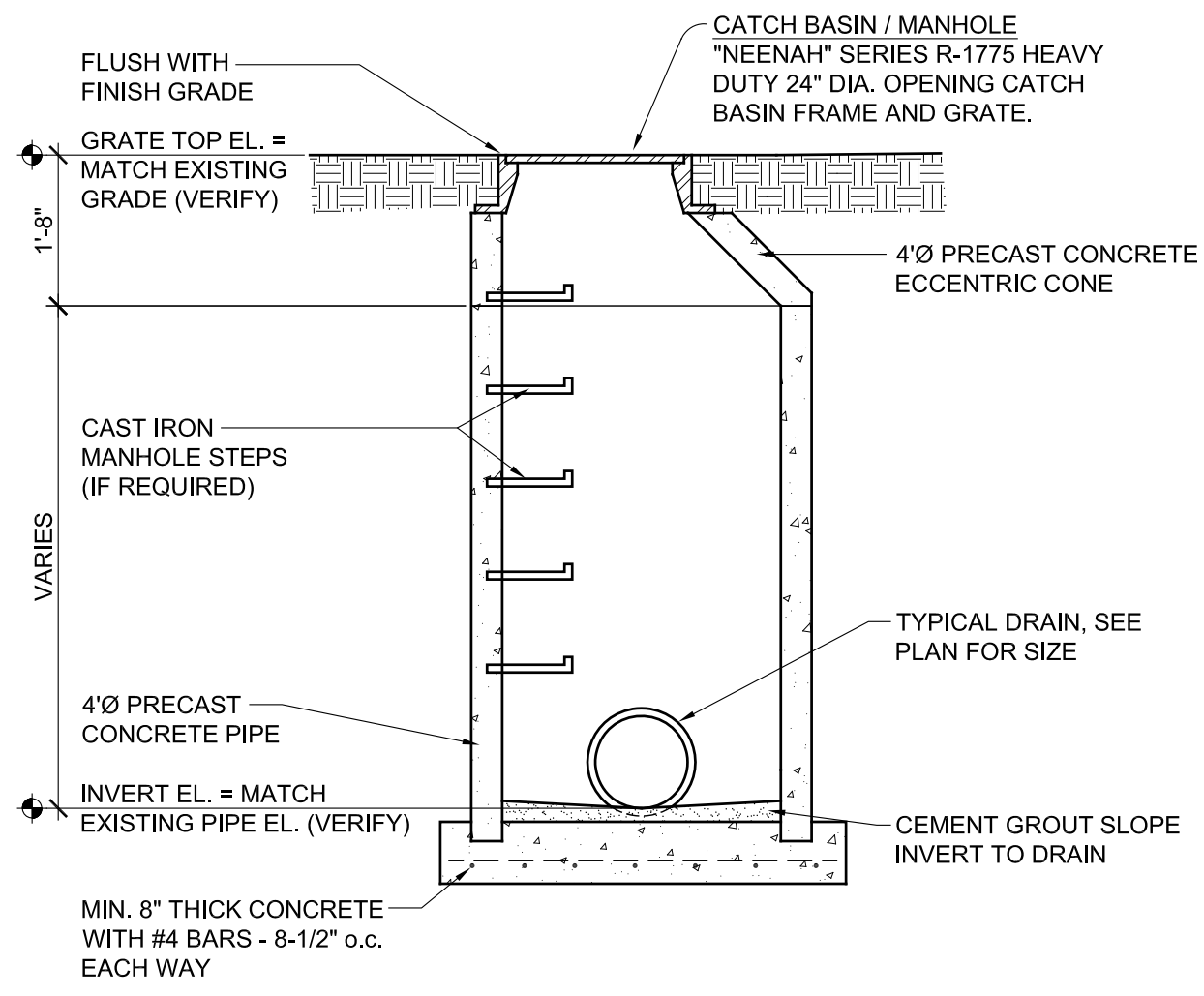
LICENSE EXPIRES: 11/30/19



ENLARGED SITE PLAN
SCALE: 1/16" = 1'-0"



CONCRETE PAVEMENT DETAIL C101-1
SCALE: 3/4"=1'-0"



MANHOLE DETAIL C101-2
SCALE: 1/2"=1'-0"

ARCHITECHNICS

architects • engineers • interior designers

510 Maine Street, Quincy, IL 62301 • 217-222-0554 • info@architectsinc.com

CURRENT DATE: 04/21/2019

LICENSE EXPIRES: 11/30/19

SANITARY SEWER REPLACEMENT FOR:
MEREDOSIA-CHAMBERSBURG CUSD #11
830 MAIN STREET MEREDOSIA, ILLINOIS

CONSTRUCTION
DOCUMENT
PHASE

ISSUE DATE: 04/21/2019

REVISIONS

NO.	Date	Description

PROJECT NUMBER: 5806

SITE PLAN

DWG. NO.
C101