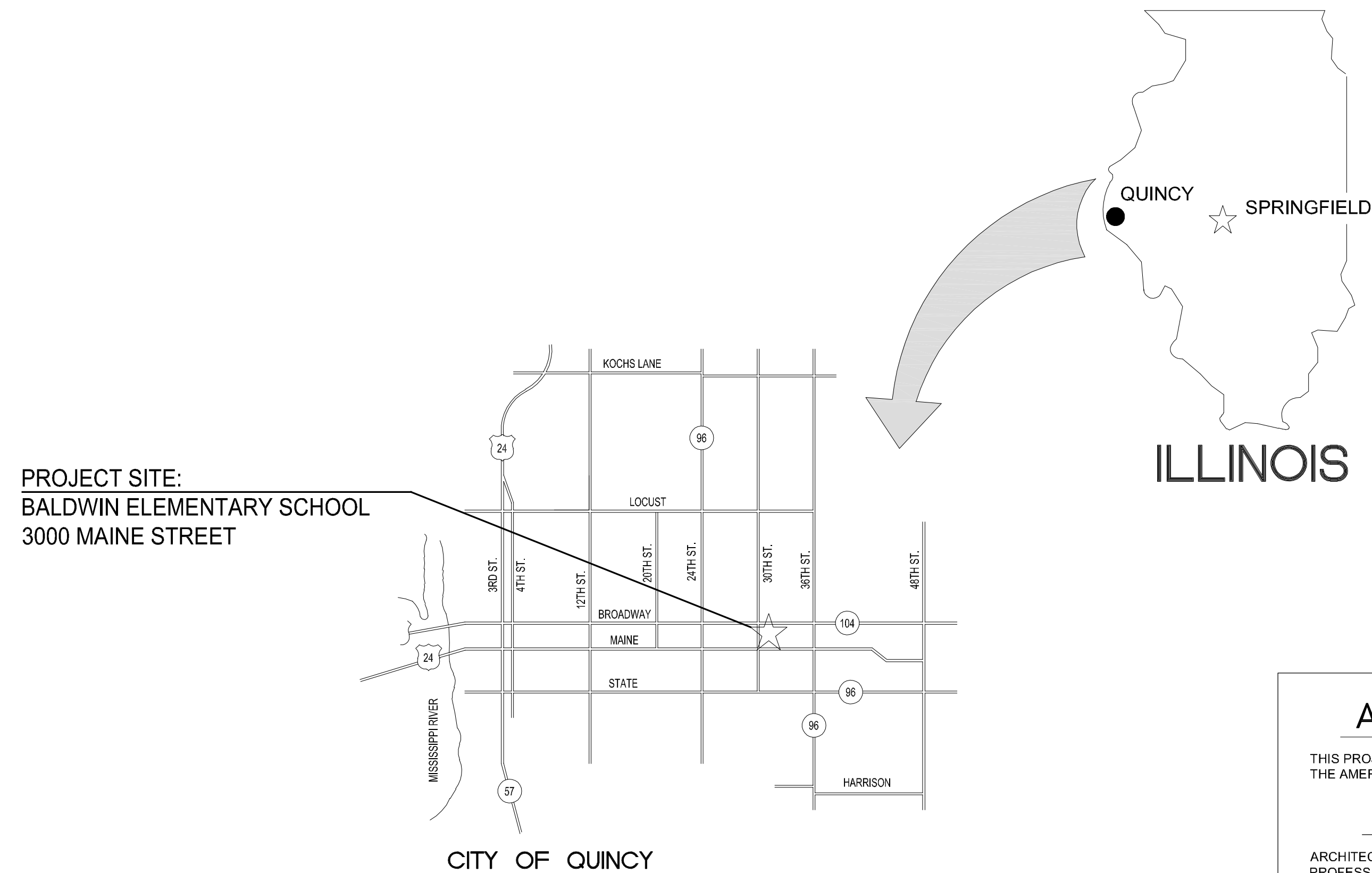


HEALTH LIFE SAFETY WORK:  
ROOF REPLACEMENT AT: BALDWIN ELEMENTARY SCHOOL  
QUINCY PUBLIC SCHOOL DISTRICT #172

3000 MAINE STREET, QUINCY, ILLINOIS



PROJECT SITE:  
BALDWIN ELEMENTARY SCHOOL  
3000 MAINE STREET

AREA LOCATION - MAP

A.D.A. COMPLIANCE

THIS PROJECT SHALL BE IN COMPLIANCE WITH GUIDELINES OF THE AMERICANS WITH DISABILITIES ACT (A.D.A.)

AMERICANS WITH DISABILITIES ACT (A.D.A.)

ARCHITECHNICS, TO THE BEST OF ITS ABILITY, HAS EXERCISED PROFESSIONAL EFFORTS TO INTERPRET THE INTENT OF THE "AMERICANS WITH DISABILITIES ACT", AND OTHER APPLICABLE FEDERAL, STATE AND LOCAL CODES AND REQUIREMENTS. ARCHITECHNICS CANNOT GUARANTEE TOTAL COMPLIANCE WITH ANY WORK DIRECTLY RELATED TO THE A.D.A., WHEN THE OWNER PERFORMS AND/OR AUTHORIZES WORK USING THESE DOCUMENTS AND/OR DRAWINGS.

NOTE:  
G.C. SHALL COORDINATE WITH MAAS CONSTRUCTION FOR ON-GOING PROJECT AT THE SITE FOR ROOF ACCESS, SITE STORAGE, ETC.

GENERAL NOTES

- CONTRACTOR TO VERIFY ALL DIMENSIONS.
- ANY DISCREPANCIES BETWEEN STATED AND EXISTING CONDITIONS SHALL BE REPORTED IMMEDIATELY TO THE ARCHITECT.
- DISCREPANCIES OR CONFLICTS BETWEEN SPECIFICATIONS AND DRAWINGS SHALL BE MADE KNOWN TO THE ARCHITECT FOR CLARIFICATION.
- THE CONTRACTOR SHALL BE RESPONSIBLE FOR PROTECTING THOSE AREAS TO REMAIN UNDISTURBED DURING CONSTRUCTION.
- THE CONTRACTOR SHALL TAKE NECESSARY PRECAUTIONS, TO MAINTAIN SAFETY AT THE CONSTRUCTION SITE, AND HE IS SOLELY RESPONSIBLE FOR SAFETY MEASURES. THE CONTRACTOR IS ALSO SOLELY RESPONSIBLE FOR CONSTRUCTION MEANS, METHODS, AND TECHNIQUES REGARDING EXECUTION OF THE WORK.
- THE CONTRACTOR SHALL CONFORM TO ALL LOCAL AND STATE CODES AND RECEIVE LOCAL AND STATE APPROVAL WHERE NECESSARY PRIOR TO CONSTRUCTION.
- THE CONTRACTOR SHALL GIVE ALL NECESSARY NOTICES AND OBTAIN ALL PERMITS AND PAY ALL LEGAL FEES. HE SHALL ALSO COMPLY WITH ALL CITY, COUNTY, AND STATE BUILDING LAWS, ORDINANCES, OR REGULATIONS.
- THE CONTRACTOR SHALL BE RESPONSIBLE FOR ANY DAMAGE DONE TO THE PREMISES OR ADJACENT PREMISES, OR INJURIES TO THE PUBLIC DURING THE CONSTRUCTION OF THE WORK, CAUSED BY HIMSELF, HIS SUBCONTRACTOR, OR THE CARELESSNESS OF ANY OF HIS EMPLOYEES.
- THE CONTRACTOR MUST UNDERSTAND THAT THE WORK IS ENTIRELY AT HIS RISK UNTIL SAME IS ACCEPTED, AND HE WILL BE HELD RESPONSIBLE FOR ITS SAFETY.
- THE CONTRACTOR SHALL FURNISH AND INSTALL ALL NECESSARY TEMPORARY WORKS FOR THE PROTECTION OF THE WORK, INCLUDING BARRICADES, WARNING SIGNS, LIGHTS, ETC.
- THE CONTRACTOR SHALL PROVIDE THE ARCHITECT WITH ONE SET OF PRINTS MARKED WITH ANY CHANGES FROM ORIGINAL CONTRACT DOCUMENTS.

INDEX OF DRAWINGS

- G1.0 COVER SHEET
- A1.0 ROOF PLAN
- A2.0 ENLARGED ROOF PLAN
- A3.0 ENLARGED ROOF PLAN
- A4.0 ROOF DETAILS
- A5.0 ROOF DETAILS
- A6.0 ROOF DETAILS

MATERIALS

	PROPERTY CORNER
	EXISTING CONTOUR
	NEW CONTOUR
	EARTH
	CRUSHED ROCK
	CONCRETE
	FACE BRICK
	CONCRETE BLOCK
	PARTITION, SEE CODE
	DIMENSION LUMBER
	FINISH LUMBER
	GYPSUM WALLBOARD
	PLYWOOD
	BATT INSULATION
	METALS

ABBREVIATIONS

ABV A.F.F. ADDN. A.C. A.H.U. ALT ALUM A.D.A.	ABOVE ABOVE FINISHED FLOOR ADDITION AIR CONDITIONING AIR HANDLING UNIT ALTERNATE ALUMINUM AMERICANS WITH DISABILITIES ACT ANCHORS AUTOMATIC BEAM BRG. BITUMINOUS BLK'G BLDG BD. BTM B.P. B.P. BLDG. BUR CA C.I. CAT CLG. C.T. C.W.B. C.B. CLOS. C.O. CO. COMP. CONC C.M.U.	DNWG D.F. EA. EACH E.W. E.M.R. ELEC. EL. ELEV. ELEVATOR EXH. EXHAUST FAN EXIST E.J. EXT E.I.F.S. F.W.C. F.V. FIN. F.E.C. FX. FL. F.D. FLOOR FTG. FND. G.P.M. GALV. GA. GAUGE G.W.T. G.B. G.F.B. GYP. BD. H.D. HC HR. HOWE. H.V.A.C. HT. H.C. H.M. HORIZ. INC. INSUL. INSUL.G. JAN. JT. J.F. JST. J.B. LAM. LAV. L.H. L.G.	DRAWING DRAWING FOUNTAIN EACH EACH WAY ELASTOMERIC MEMBRANE ROOFING ELECTRIC ELECTRIC PANELBOARD ELEVATION ELEVATOR EXHAUST EXHAUST FAN EXISTING EXPANSION JOINT EXTERIOR EXTERIOR INSULATION FINISH SYSTEM FABRIC WALL COVERING FIELD VERIFY FINISH FIRE EXTINGUISHER CABINET FIXTURE FLOOR FLOOR DRAIN FLOURESCENT FOOTING FOUNDATION GALLONS PER MINUTE GALVANIZED GAUGE GLAZED WALL TILE GRAB BAR GROUND FACE BRICK GYPSUM WALLBOARD HARDHAND DRYER HANDICAPPED HANDRAIL HARDWARE HEATING, VENTILATING, & AIR CONDITIONING HEIGHT HOLLOW CORE HOLLOW METAL HORIZONTAL INCORPORATED INSULATION INSULATED GLASS JANITOR JOINT JOINT FILLER JOIST JUNCTION BOX LAMINATE LAVATORY LEFT HAND LONG	M.A.U. M.H. MFG. M.T. MK. M.O. MATL. MECH. MET. MIN. MISC. M.R. MTD. N.D. N.I.C. NDM. NO. OFC. O.C. OPN. OPP. HND. OH. PT. PAIR PARTN. PERF. P.D. PLAS. PLS. P.L.B. P.V. PLYWD. P.V.C. P.S.F. PREFIN. PROJ. MAN. QTY. Q.T. RAD. RECEP. REF. R.A. R.H. R. RISERS R.D. R.B. R.C.B. REQD. R.O.W. RM. R.I. R.O. R.S.T. RUBBER TILE SAN. SCHED.	MAKEUP AIR UNIT MANHOLE MANUFACTURER MARBLE TILE MARK MASONRY OPENING MATERIAL MECHANICAL METAL MINIMUM MISCELLANEOUS MOISTURE RESISTANT MOUNTED NAPKIN DISPENSER NOT IN CONTRACT NOMINAL NUMBER OFFICE ON CENTER OPENING OPPOSITE HAND OVERHEAD PAINT FLOOR PARTITION PERFORATED PRESSURE DROP PLASTIC PLUMBING STACK PLUMBING VENT PLYWOOD POLYVINYL CHLORIDE POUNDS PER SQUARE FOOT PREFINISHED PROJECT MANUAL QUANTITY QUARRY TILE RADIUS RECEPTACLE REFERENCE RETURN AIR RIGHT HAND RISERS ROOF DRAIN RUBBER BASE RUBBER COVE BASE REQUIRED RIGHT OF WAY ROOM ROUGH IN ROUGH OPENING RUBBER STAIR TREAD RUBBER TILE SANITARY (SEWER) SCHEDULE	SECT. SHT. SIM. S.C. SPEC. S & V. S.S. STD. STL. STOR. ST. S. S.G.T. S.A.P. TACK BOARD T.B. T. & S. T.D.D. T.G. T.R.G. TZ. T.T. THK. THOLD T.P. T. & G. T. & B. TRANS. T. TYP. U.L. U.N.O. U.P. V.P. VERT. VEST. V.C.T. V.W.C. V.C.P. W.C. W.W.F. W. WDW. W.G. W/ W/O WD. T. TYP. U.L.	SECTION SHEET SIMILAR SOLID CORE SPECIFICATION STAIN AND VARNISH STAINLESS STEEL STANDARD STEEL STORAGE STORM SEWER STRUCTURAL GLAZED TILE SUSPENDED ACCOUSTICAL PANELS TACK BOARD TAPE AND SAND TELECOMMUNICATIONS DEVICE FOR DEAF TEMPERED GLASS TEMPERED REFLECTIVE GLASS TERRAZZO TERRAZZO TILE THICK/THICKNESS THRESHOLD TOILET PAPPER TONGUE AND GROOVE TOP AND BOTTOM TRANSITION TREADS TYPICAL UNDERWRITERS LABORATORIES UNLESS NOTED OTHERWISE UTILITY POLE VAPOR BARRIER VERTICAL VESTIBULE VINYL COMPOSITION TILE VINYL WALL COVERING VITRIFIED CLAY PIPE WATER CLOSET WELDED WIRE FABRIC WIDTH WINDOW WIRE GLASS WITH WITH OUT WOOD TREADS TYPICAL UNDERWRITERS
---	---	---	--	--	---	--	--

ARCHITECHNICS  
architects • engineers • interior designers  
5710 Maine Street, Quincy, IL 62301 • 217-292-0354 • info@architechtnics.com  
DESIGN FIRM NO. 184004061

CURRENT DATE: 1/17/2019



LICENSE EXPIRES: 11/30/19

HEALTH LIFE SAFETY WORK:  
ROOF REPLACEMENT AT: BALDWIN ELEMENTARY SCHOOL  
QUINCY PUBLIC SCHOOL DISTRICT #172  
3000 MAINE STREET, QUINCY, ILLINOIS

CONSTRUCTION  
DOCUMENT  
PHASE

ISSUED FOR  
CONSTRUCTION

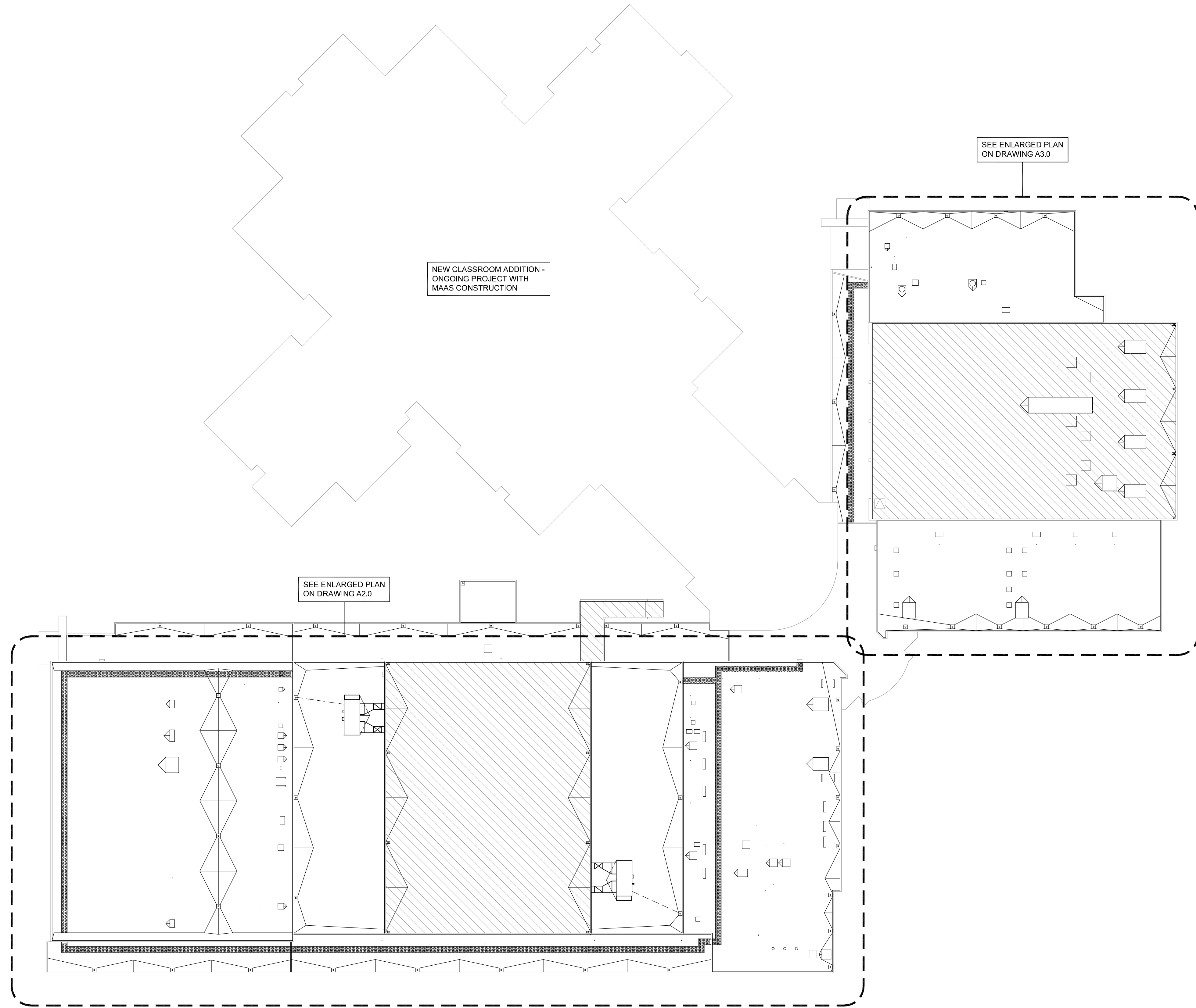
ISSUE DATE: 1/17/2019

REVISIONS	

PROJECT NUMBER: 5774

COVER SHEET

DWG. NO.  
G1.0



**OVERALL ROOF PLAN**  
SCALE: 1" = 30'-0"  
0 10' 20' 30' 60'



CURRENT DATE: 1/17/2019



LICENSE EXPIRES: 11/30/19

HEALTH LIFE SAFETY WORK:  
ROOF REPLACEMENT AT: BALDWIN ELEMENTARY SCHOOL  
**QUINCY PUBLIC SCHOOL DISTRICT #172**  
3000 MAINE STREET, QUINCY, ILLINOIS

CONSTRUCTION  
DOCUMENT  
PHASE

ISSUED FOR  
CONSTRUCTION

ISSUE DATE: 1/17/2019

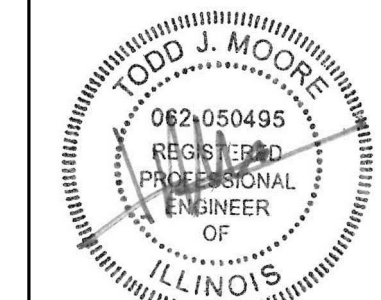
REVISIONS	

PROJECT NUMBER: 5774

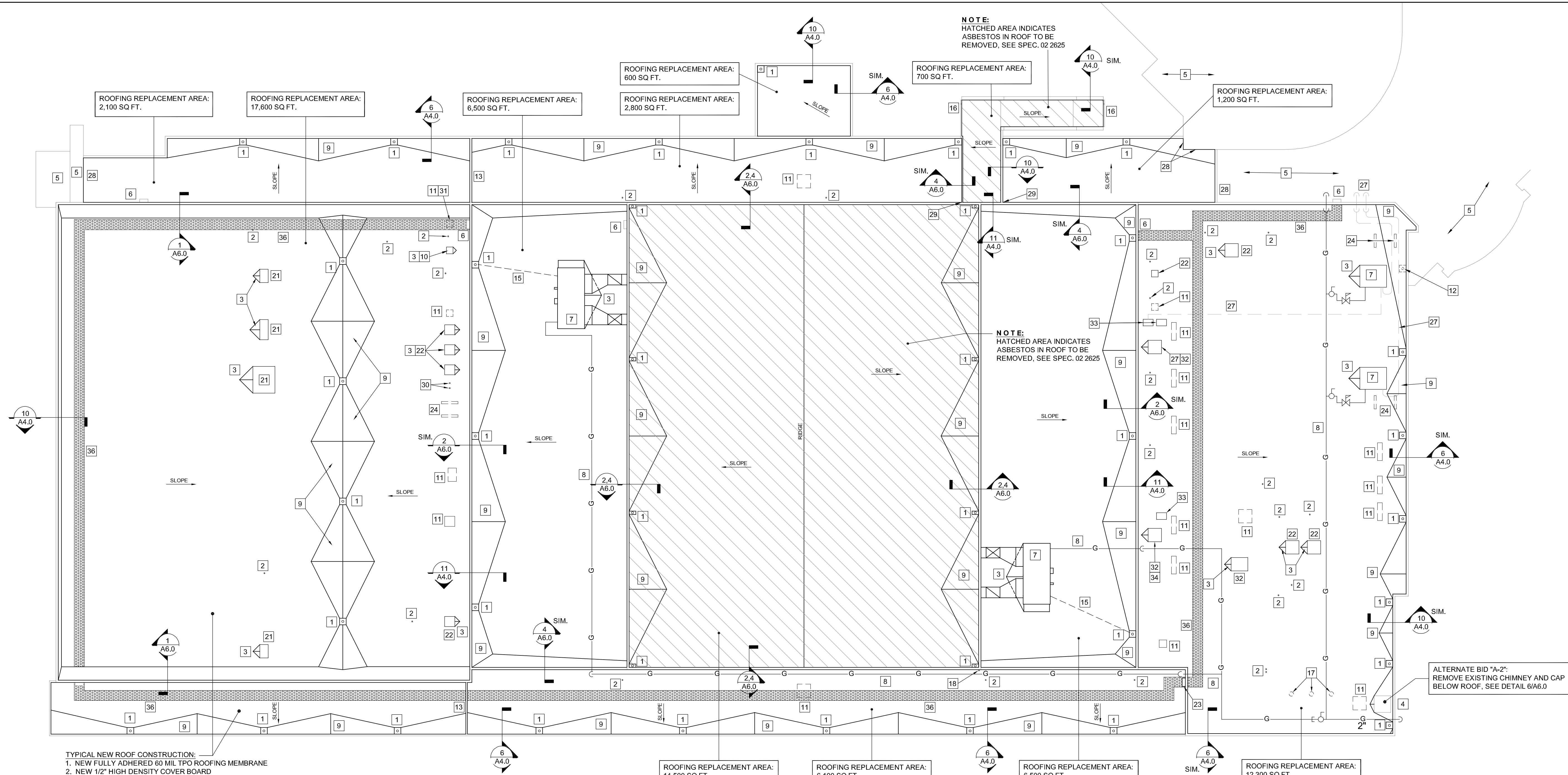
**OVERALL  
ROOF PLAN**

DWG. NO.  
**A1.0**





REVISIONS	



TYPICAL NEW ROOF CONSTRUCTION:  
1. NEW FULLY ADHERED 60 MIL TPO ROOFING MEMBRANE  
2. NEW 1/2" HIGH DENSITY COVER BOARD  
3. (2) LAYERS OF 2.4" POLYISO INSULATION  
4. AIR AND VAPOR BARRIER INSTALLED ATOP EXISTING ROOF CONSTRUCTION.  
NEW AIR AND VAPOR BARRIER SHALL BE FASTENED TO EXISTING METAL DECK CONSTRUCTION WITH MANUFACTURERS ADHESIVE SYSTEM. SEE SPEC. 07 5400

NOTE:  
ALTERNATE BID "A-1" - PROVIDE 30 YEAR WARRANTY ON ROOF SYSTEM, SEE SPEC. 07 5420

**ENLARGED ROOF PLAN**

SCALE: 1" = 16'-0"  
0 8' 16' 32'



NOTE:  
G.C. SHALL COORDINATE WITH MAAS CONSTRUCTION FOR ON-GOING PROJECT AT THE SITE FOR ROOF ACCESS, SITE STORAGE, ETC.

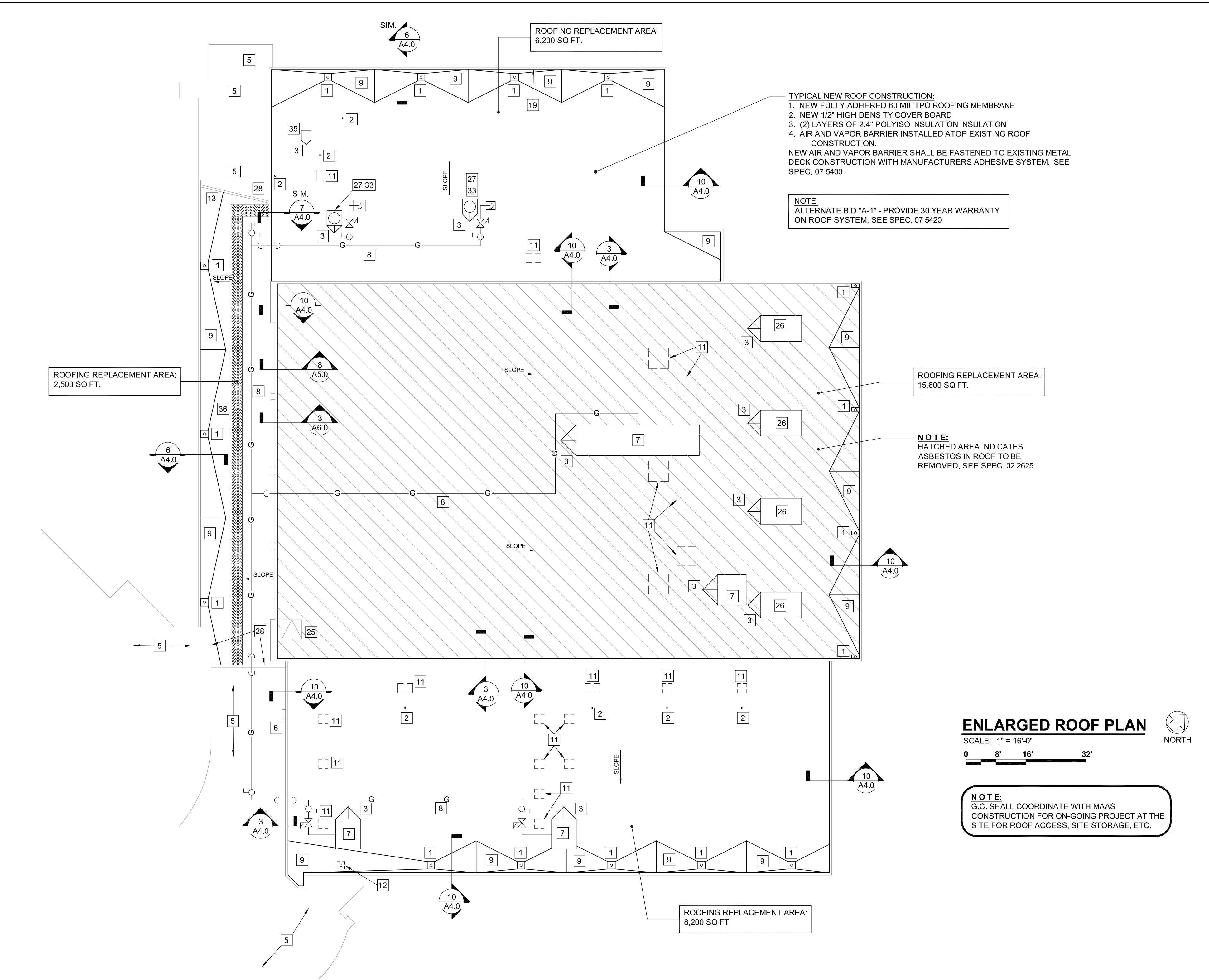
**KEYED CONSTRUCTION NOTES**

- |  |  |  |   |
|--|--|--|---|
| 1. EXISTING ROOF DRAIN LOCATION TO REMAIN, INSTALL NEW DRAIN AND STRAINER, SEE DETAIL 2/A4.0.  | 10. REMOVE EXISTING NORTH EXHAUST HOOD (SHOWN DASHED). INSTALL NEW RIGID METAL EXHAUST DUCT FROM (2) EXISTING EXHAUST FANS BELOW AND CONNECT TO EXISTING SOUTH EXHAUST HOOD TO REMAIN. | 20. INSTALL NEW TERM BAR FLASHING AT EXISTING WALL, SEE DETAIL 8/A4.0  | 30. EXISTING VENT PIPING TO BE REMOVED, CAP BELOW EXISTING ROOF DECK  |
| 2. NEW FLASHING AT EXISTING ROOF VENT PIPING, SEE DETAIL 4/A4.0 - MODIFY EXISTING VENT PIPING AS REQUIRED TO ADJUST VENT TO NEW ROOF CONSTRUCTION. INSTALL NEW PATE OR EQUAL PIPE PORTAL. VERIFY SIZE. SEE DETAIL 7/A5.0 | 11. DEMOLISH EXISTING VENT HOOD. PROVIDE NEW DECK CLOSURE, SEE DETAIL 9/A4.0.  | 21. EXISTING MECHANICAL UNIT TO REMAIN, FLASH AND SEAL AT BASE PER DETAIL 5/A4.0 (SIM)   | 31. RE-ROUTE EXISTING EXHAUST PIPING TO SINGLE POINT, SEE KEYED NOTE #10  |
| 3. INSTALL TAPERED INSULATION ROOF CRICKET AT HIGH SIDE OF EQUIPMENT CURB FOR PROPER DRAINAGE AS INDICATED   | 12. EXISTING ROOF DRAIN TO BE REMOVED, CAP EXISTING DRAIN PIPING BELOW ROOF DECK OR REMOVE ENTIRELY  | 22. EXISTING EXHAUST FAN TO REMAIN, FLASH AND SEAL AT BASE PER DETAIL 5/A4.0 (SIM)   | 32. EXISTING HOOD TO BE REMOVED, EXISTING CURB TO REMAIN - MEMBRANE TO RUN CONTINUOUS OVER TOP OF CURB, SEE DETAIL 6/A6.0 - PROVIDE SOLID BLOCKING FOR ATTACHMENT OF EXISTING DISCONNECT SWITCH |
| 4. EXISTING CHIMNEY TO REMAIN, SEE DETAIL 3/A4.0 (SIM) FOR MEMBRANE TERMINATION AT EXISTING MASONRY  | 13. NEW TPO MEMBRANE TO RUN CONTINUOUS UP AND OVER CURB, SEE DETAIL 7/A4.0   | 23. NEW TUBULAR LADDER WITH WALK THROUGH TO MATCH EXISTING, EQUAL TO: PRECISION LADDERS MODEL NO. FLH-04, FIELD VERIFY REQUIRED LADDER HEIGHT, SEE SPEC. 05 5000 | 33. EXISTING MECHANICAL UNIT AND CURB TO BE REMOVED AND REINSTALLED ATOP NEW ROOF MEMBRANE  |
| 5. EXISTING MEMBRANE ROOF SYSTEM TO REMAIN (N.I.C.)  | 14. INSTALL NEW TERM BAR FLASHING AT EXISTING MASONRY WALL, SEE DETAIL 3/A4.0  | 24. DEMOLISH EXISTING CURB SUPPORTS. PROVIDE NEW DECK CLOSURE, SEE DETAIL 9/A4.0 (SIM.)  | 34. EXISTING ELECTRICAL SERVICE AND PIPING TO REMAIN, FLASH AND SEAL WHERE REQUIRED PER ROOF MEMBRANE MANUFACTURER'S STANDARD DETAILS   |
| 6. EXISTING STEEL LADDER TO REMAIN, REMOVE AND REINSTALL AS REQUIRED   | 15. EXISTING CONDENSATE DRAIN PIPING TO REMAIN, REMOVE AND REINSTALL AS REQUIRED   | 25. EXISTING ROOF HATCH TO REMAIN  | 35. EXISTING EXHAUST HOOD TO REMAIN, FLASH AND SEAL AT BASE PER DETAIL 5/A4.0 (SIM)   |
| 7. EXISTING MECHANICAL ROOF TOP UNIT TO REMAIN, SEE DETAIL 5/A4.0  | 16. REMOVE EXISTING METAL GUTTER AND DOWNSPOUT AND PROVIDE NEW PREFIN. ALUM. GUTTER AND DOWNSPOUT, SEE DETAIL 5/A6.0 AND SPEC. 07 6200   | 26. EXISTING FIRE VENT TO REMAIN, FLASH AND SEAL AT BASE PER DETAIL 5/A4.0 (SIM)   | 36. NEW TPO WALKWAY ROLLS OR PADS.  |
| 8. EXISTING GAS PIPING TO REMAIN. TEMPORARILY SUPPORT TO ALLOW FOR NEW ROOF INSTALLATION. REINSTALL PIPE STANDS AFTER NEW ROOF IS INSTALLED. PROVIDE NEW PIPE STANDS AS REQUIRED   | 17. EXISTING EXHAUST PIPING TO BE REMOVED  | 27. EXISTING ELECTRICAL SERVICE AND CONDUIT TO REMAIN, REMOVE AND REINSTALL AS REQUIRED  |   |
| 9. ROOF INSULATION CRICKET, PROVIDE ADDITIONAL INSULATION AS REQUIRED AND SLOPE PER ROOF MEMBRANE MANUFACTURER'S TYPICAL DETAILS.  | 18. EXISTING ANTENNA AND ASSOCIATED WIRING TO BE REMOVED   | 28. SPLICE NEW MEMBRANE TO EXISTING, SEE DETAIL 5/A5.0   |   |
|  | 19. REMOVE EXISTING WEATHER VANE AND WOOD SUPPORT  | 29. EXISTING EXPANSION JOINT TO BE REMOVED, PROVIDE NEW JOINT FILLER AND COVER EQUAL TO: JOHNS MANSVILLE "EXPAND-O-FLASH"  |   |

**LEGEND**

- EXHAUST FAN
- PLUMBING VENT
- COMBUSTION VENT
- ROOF ACCESS PANEL
- MECHANICAL HOOD
- KEYED NOTES
- NOT IN CONTRACT
- INDICATES ROOF SLOPE
- DETAIL SECTION, SEE DETAILS SHEETS A4.0-A6.0



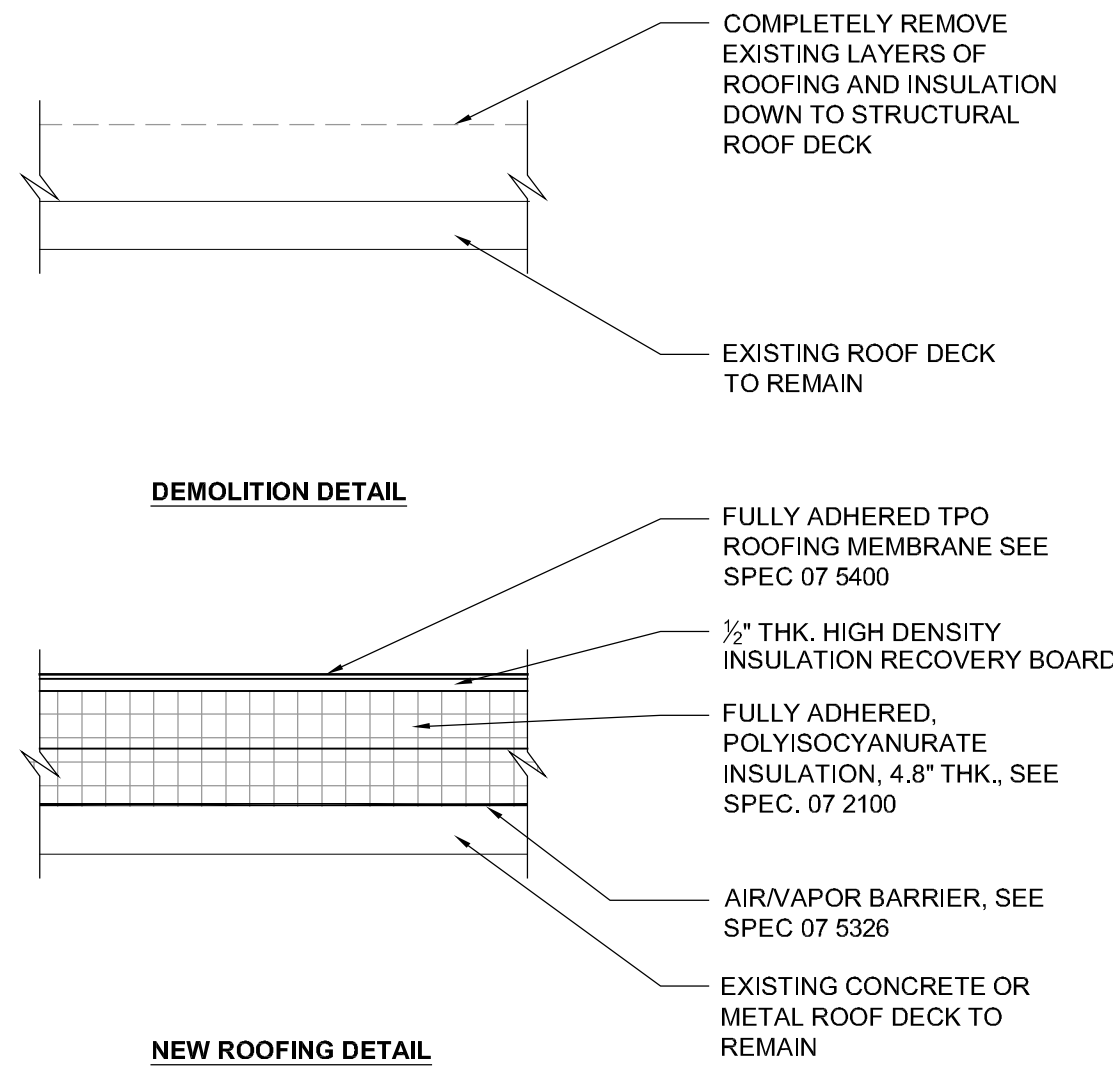


LEGEND	
	EXHAUST FAN
	PLUMBING VENT
	COMBUSTION VENT
	ROOF ACCESS PANEL
	MECHANICAL HOOD
	KEYED NOTES
	NOT IN CONTRACT
	INDICATES ROOF SLOPE
	DETAIL SECTION, SEE DETAILS SHEETS A4.0-A6.0

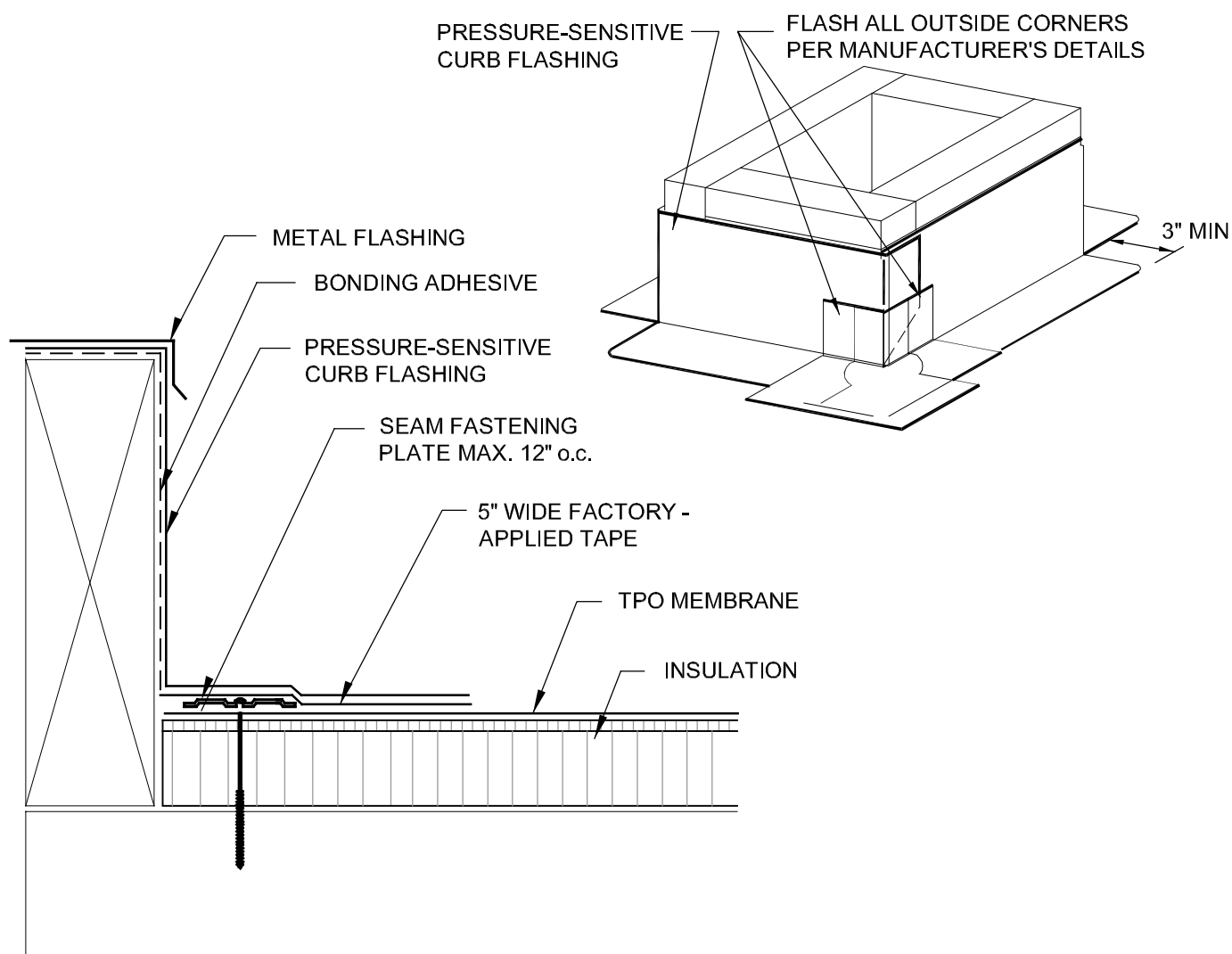


REVISIONS	

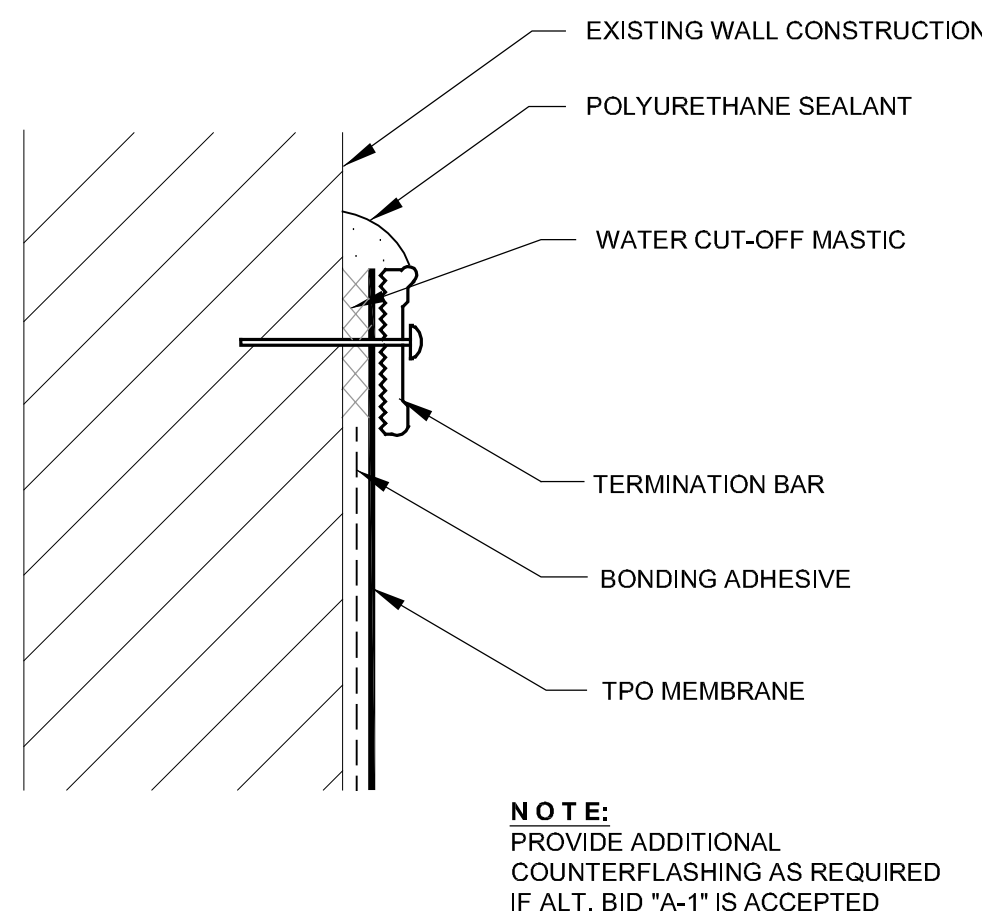




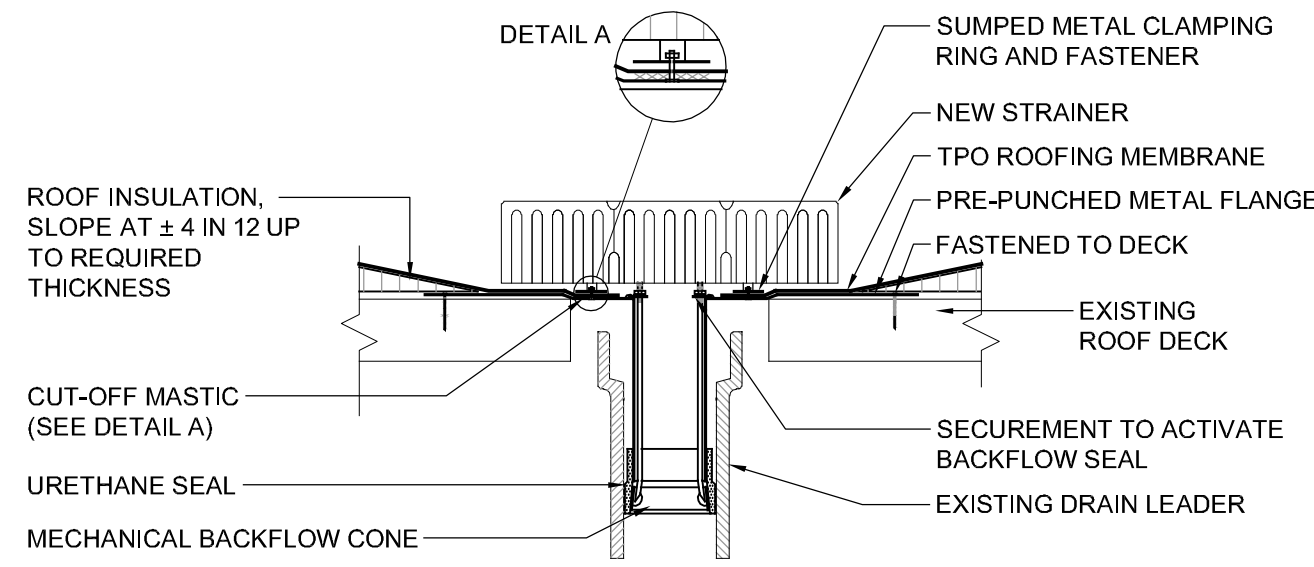
**1 TYPICAL ROOFING DETAIL**  
SCALE: 1 1/2" = 1'-0"



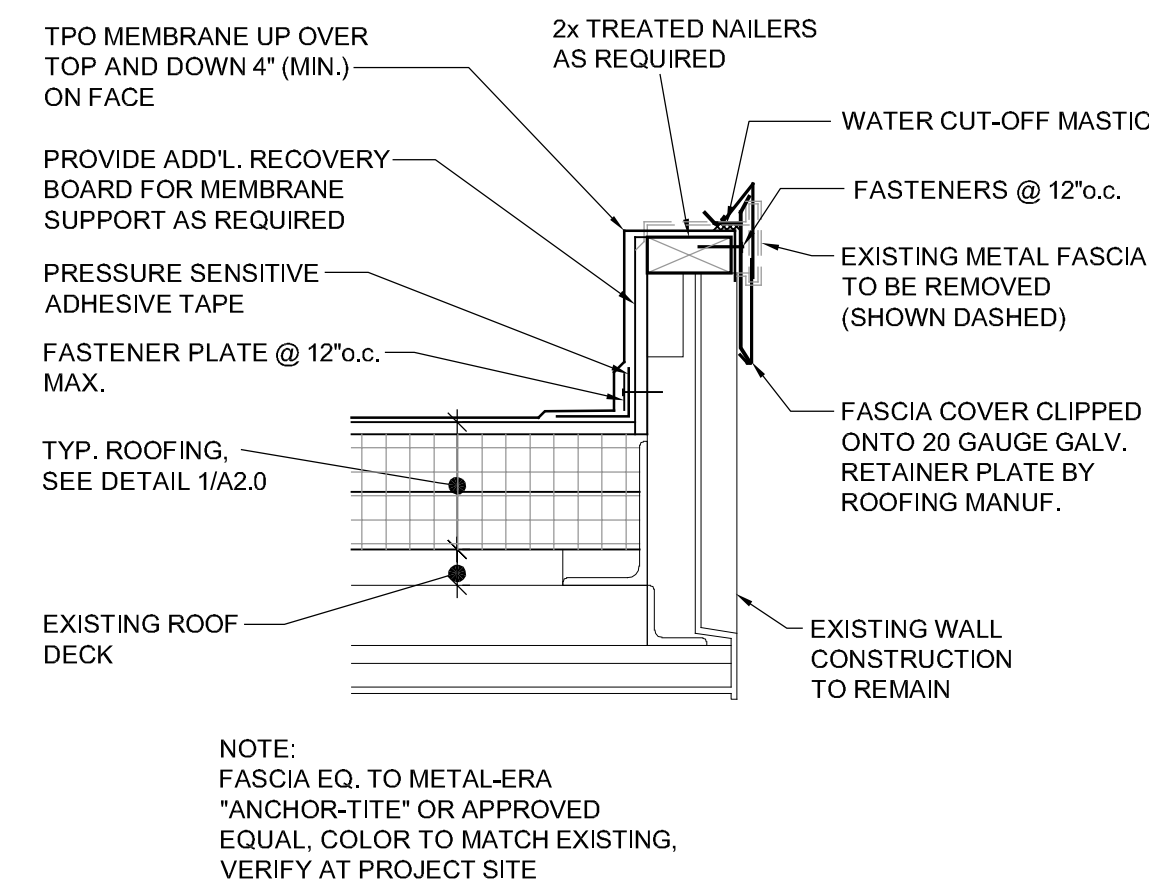
**5 ROOF CURB DETAIL**  
SCALE: N.T.S.



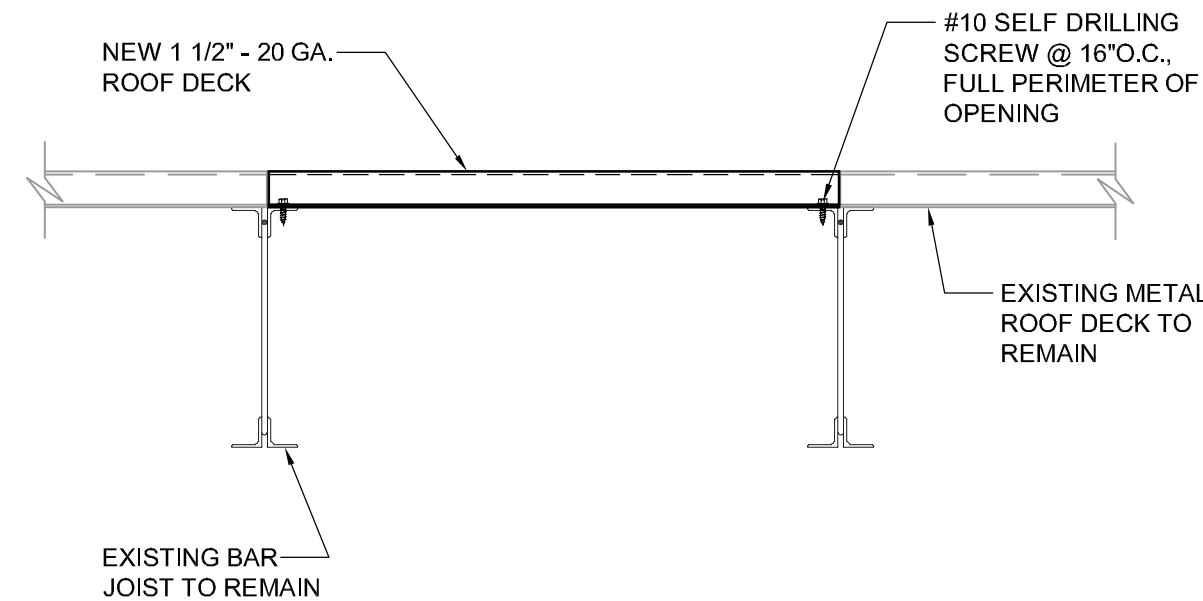
**8 TERMINATION BAR DETAIL**  
SCALE: N.T.S.



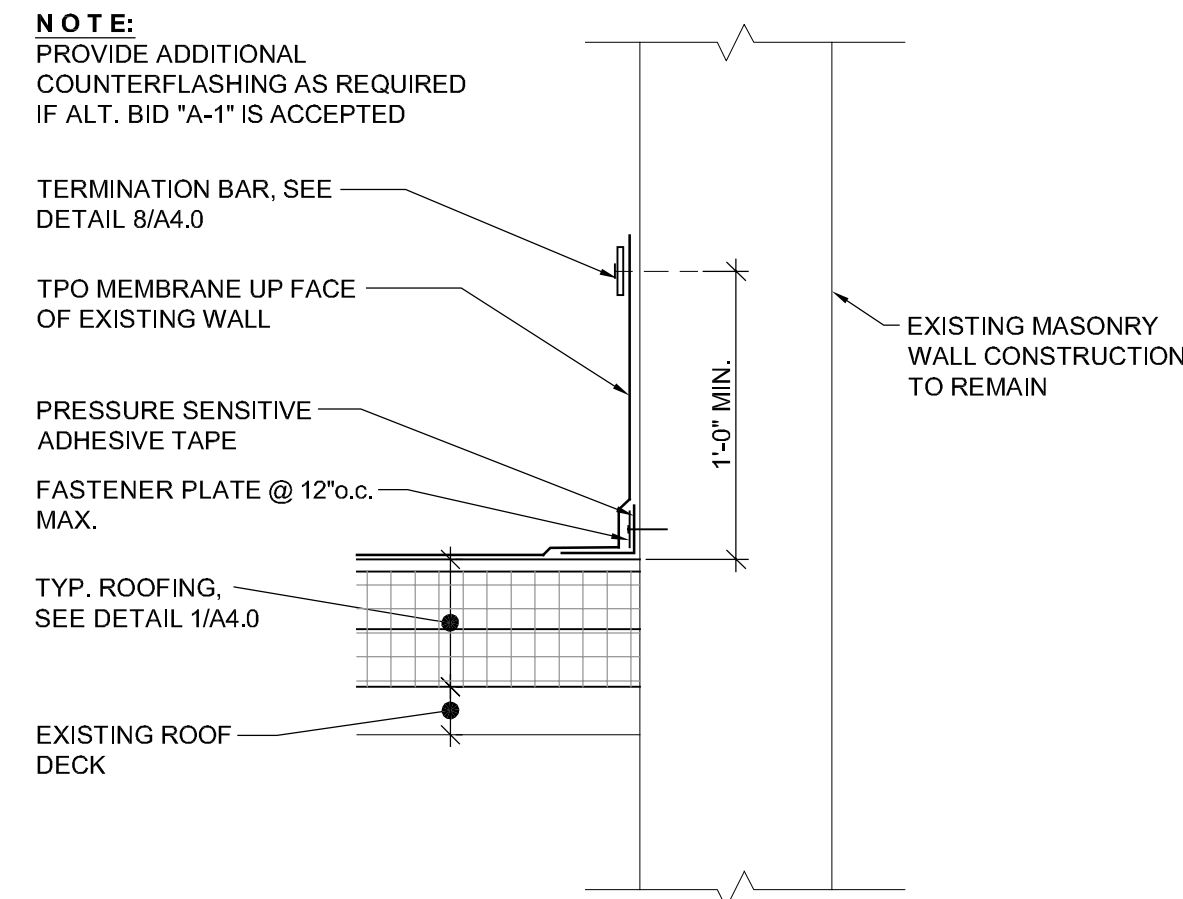
**2 ROOF DRAIN DETAIL**  
SCALE: 1 1/2" = 1'-0"



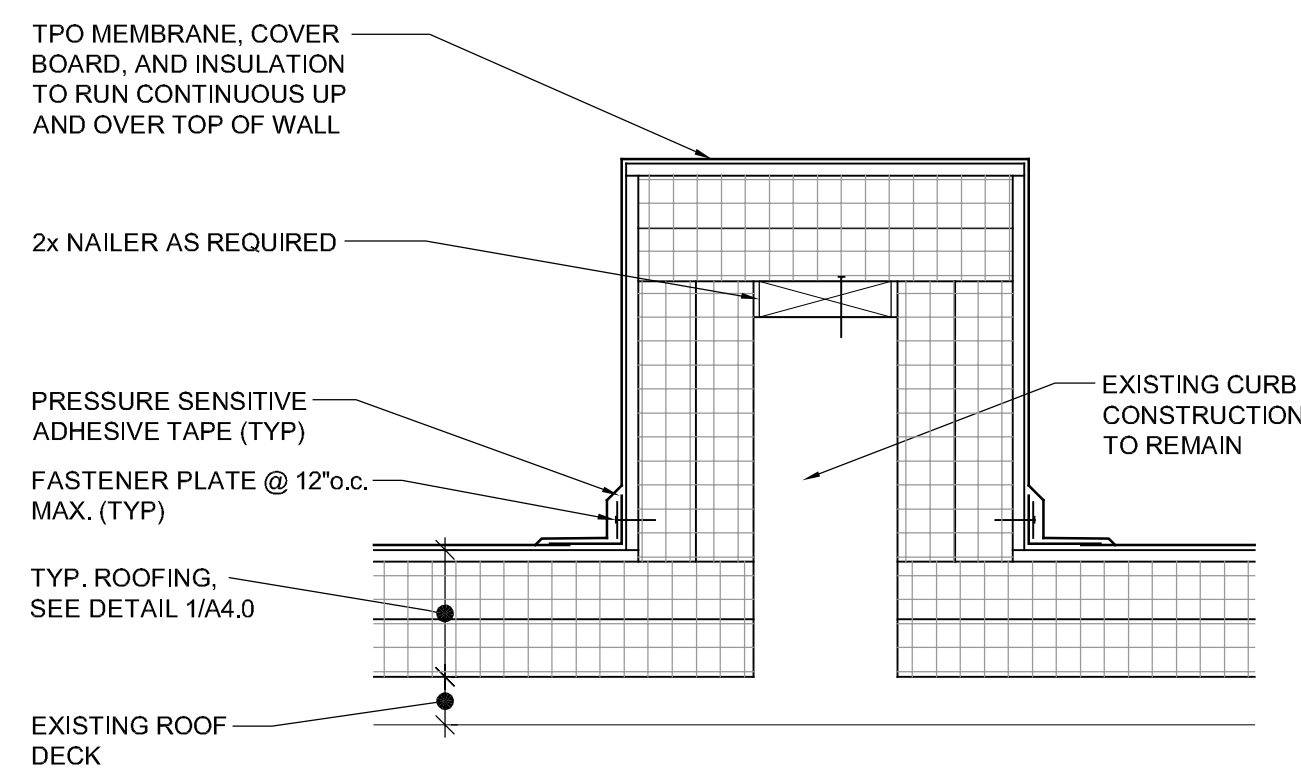
**6 EDGE FLASHING DETAIL**  
SCALE: 1 1/2" = 1'-0"



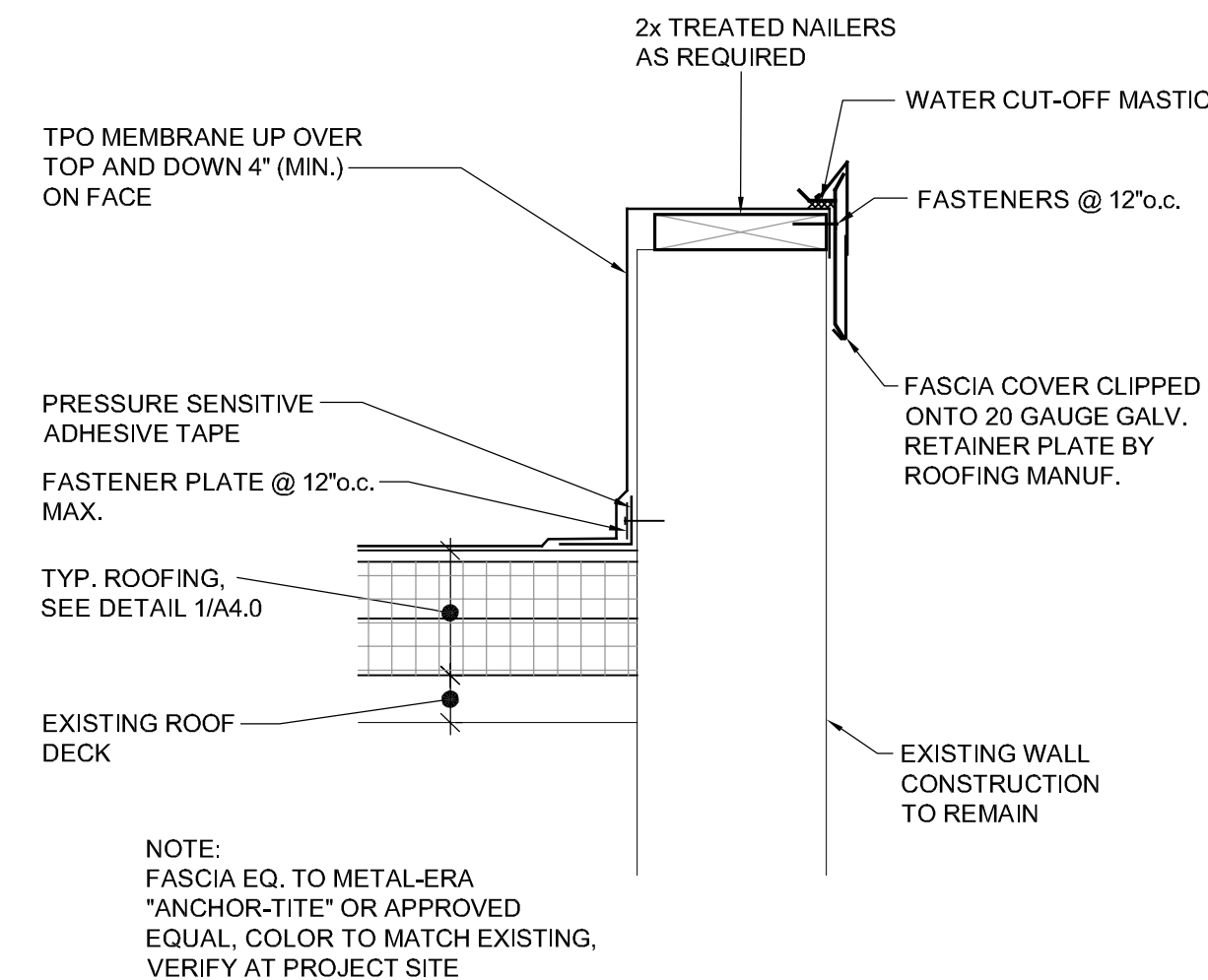
**9 EXISTING ROOF PENETRATION INFILL DETAIL**  
SCALE: 1 1/2" = 1'-0"



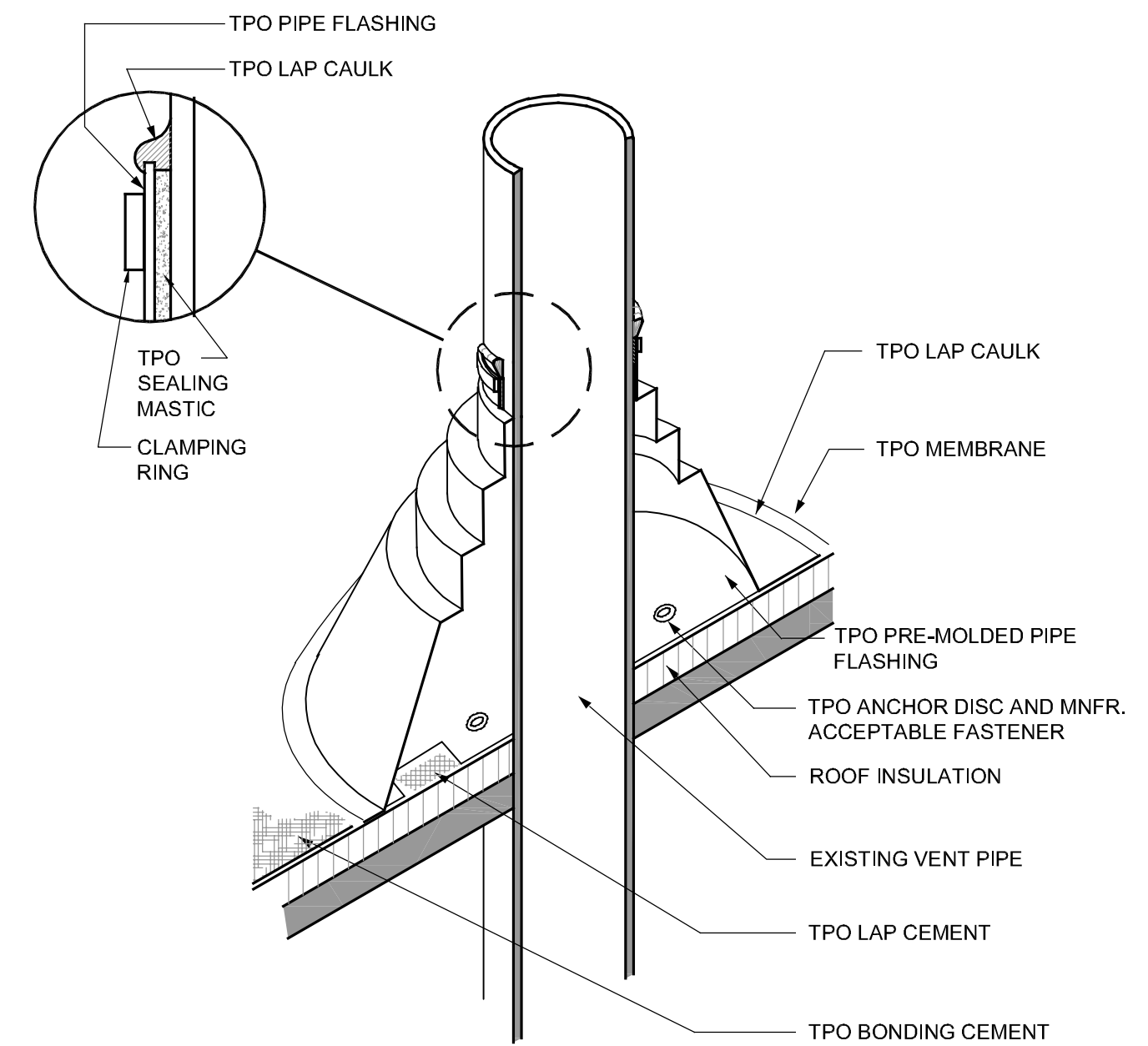
**3 EDGE FLASHING DETAIL**  
SCALE: 1 1/2" = 1'-0"



**7 CURB FLASHING DETAIL**  
SCALE: N.T.S.



**10 EDGE FLASHING DETAIL**  
SCALE: 1 1/2" = 1'-0"



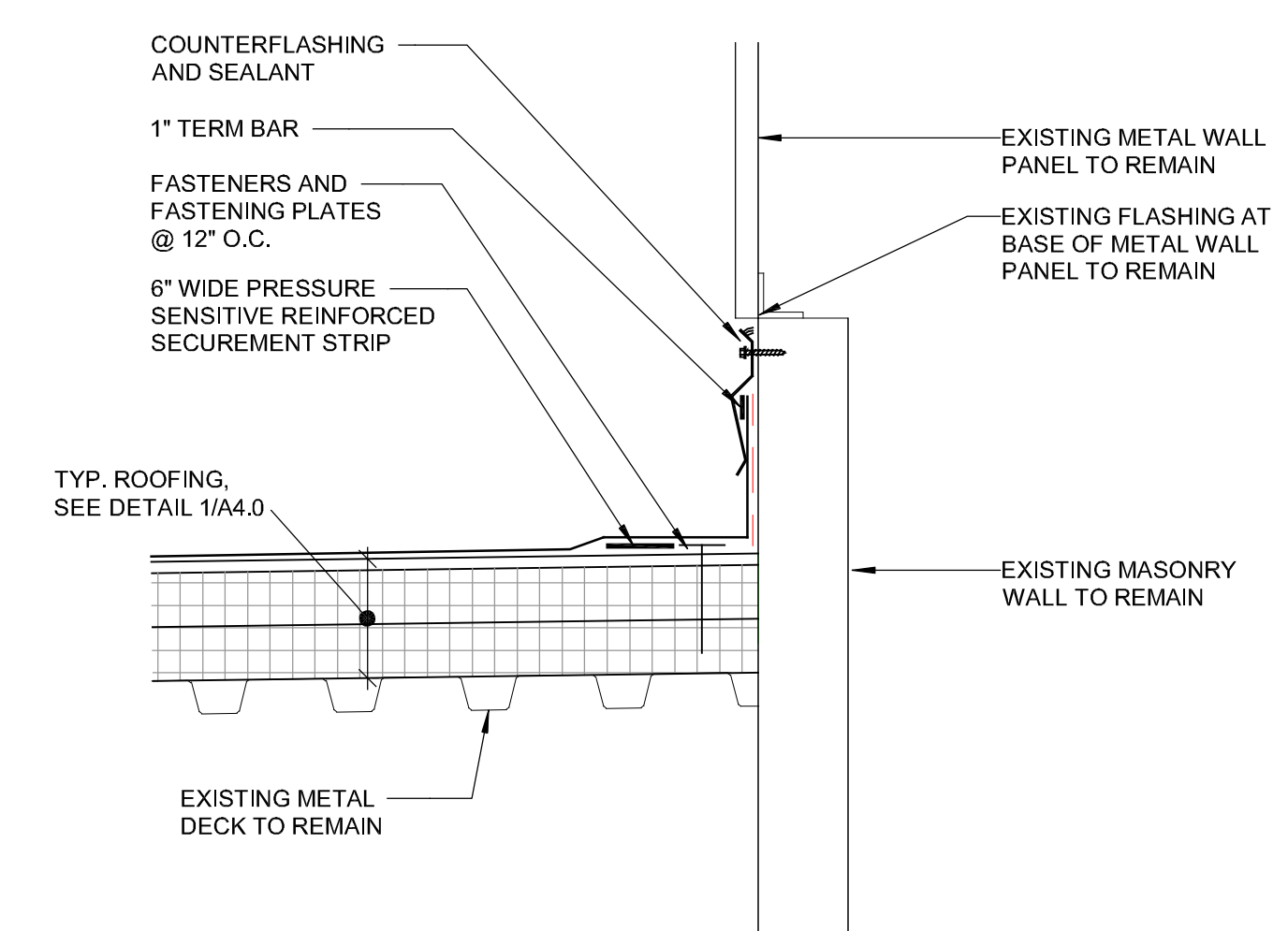
- NOTES:**
- DO NOT OVERLAP THE FLANGES FROM ADJACENT PIPE FLASHINGS.
  - ANY SEAM UNDER BOOT FLANGE TO BE TREATED AS T-JOINT.

**4 PIPE FLASHING DETAIL**  
SCALE: N.T.S.

## GENERAL NOTES:

TOUCH-UP PAINT ON EXISTING SURFACES NEXT TO NEW WORK AS REQ'D.

DETAILS SHOWN ARE FOR CONTRACTORS INFORMATION AND TO COMMUNICATE DESIGN INTENT. DETAILS SHOWN ARE BASED UPON BEST INFORMATION AVAILABLE AT TIME, CONTRACTOR SHALL FIELD VERIFY ALL EXISTING CONDITIONS. IN ORDER TO ACHIEVE MANUFACTURER'S WARRANTY, DETAILS MAY ALSO VARY BASED UPON MANUFACTURER'S SYSTEM AND DESIGN RECOMMENDATIONS. SHOP DRAWING SUBMITTALS REQUIRED.



**11 FLASHING DETAIL**  
SCALE: 1 1/2" = 1'-0"

CURRENT DATE: 1/17/2019



LICENSE EXPIRES: 11/30/19

**CONSTRUCTION DOCUMENT PHASE**

**ISSUED FOR CONSTRUCTION**

ISSUE DATE: 1/17/2019

REVISIONS

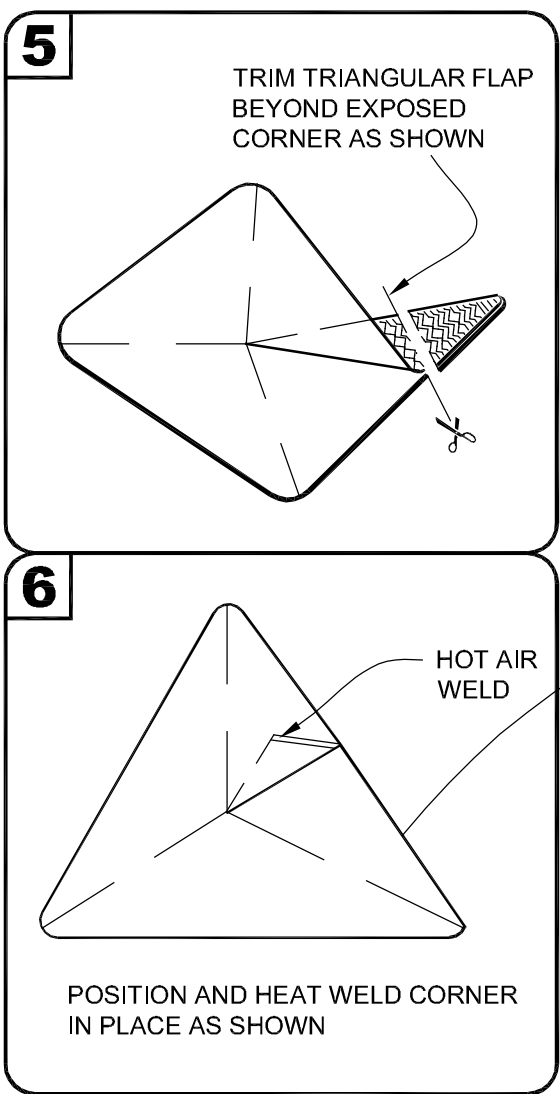
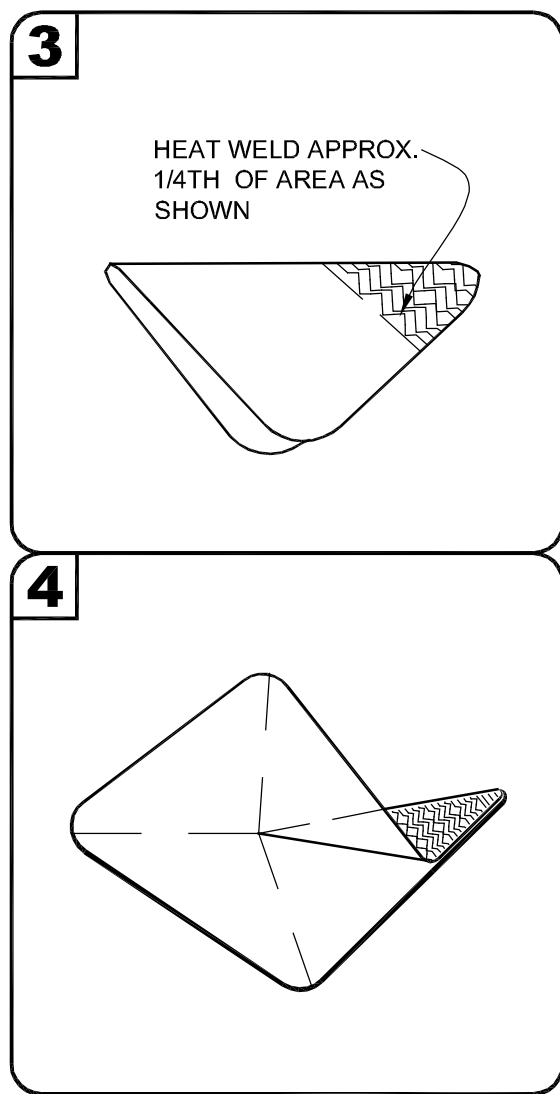
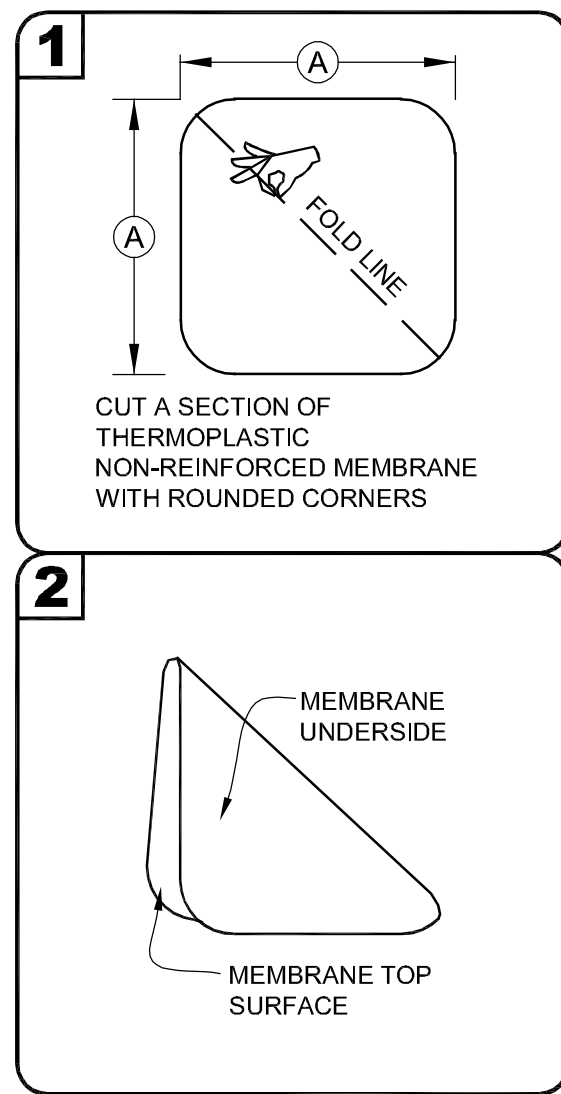
PROJECT NUMBER: 5774

**ROOF DETAILS**

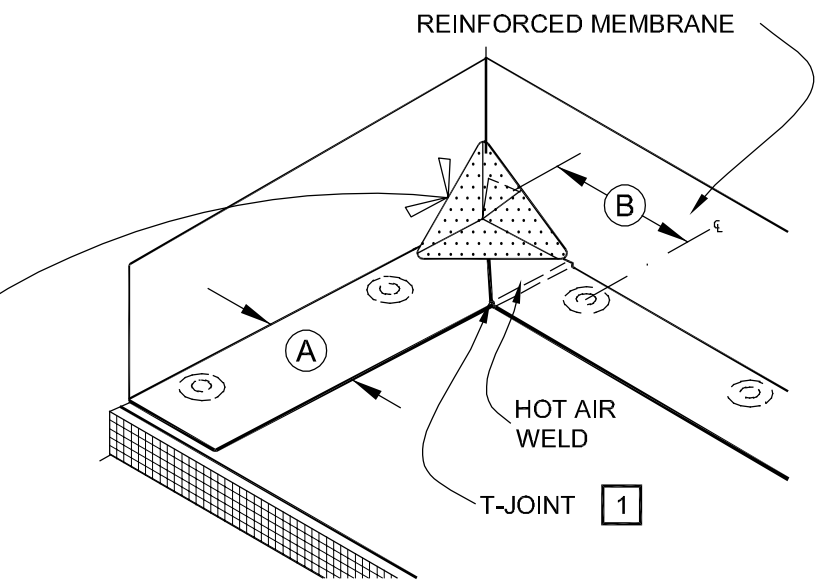
DWG. NO.

**A4.0**





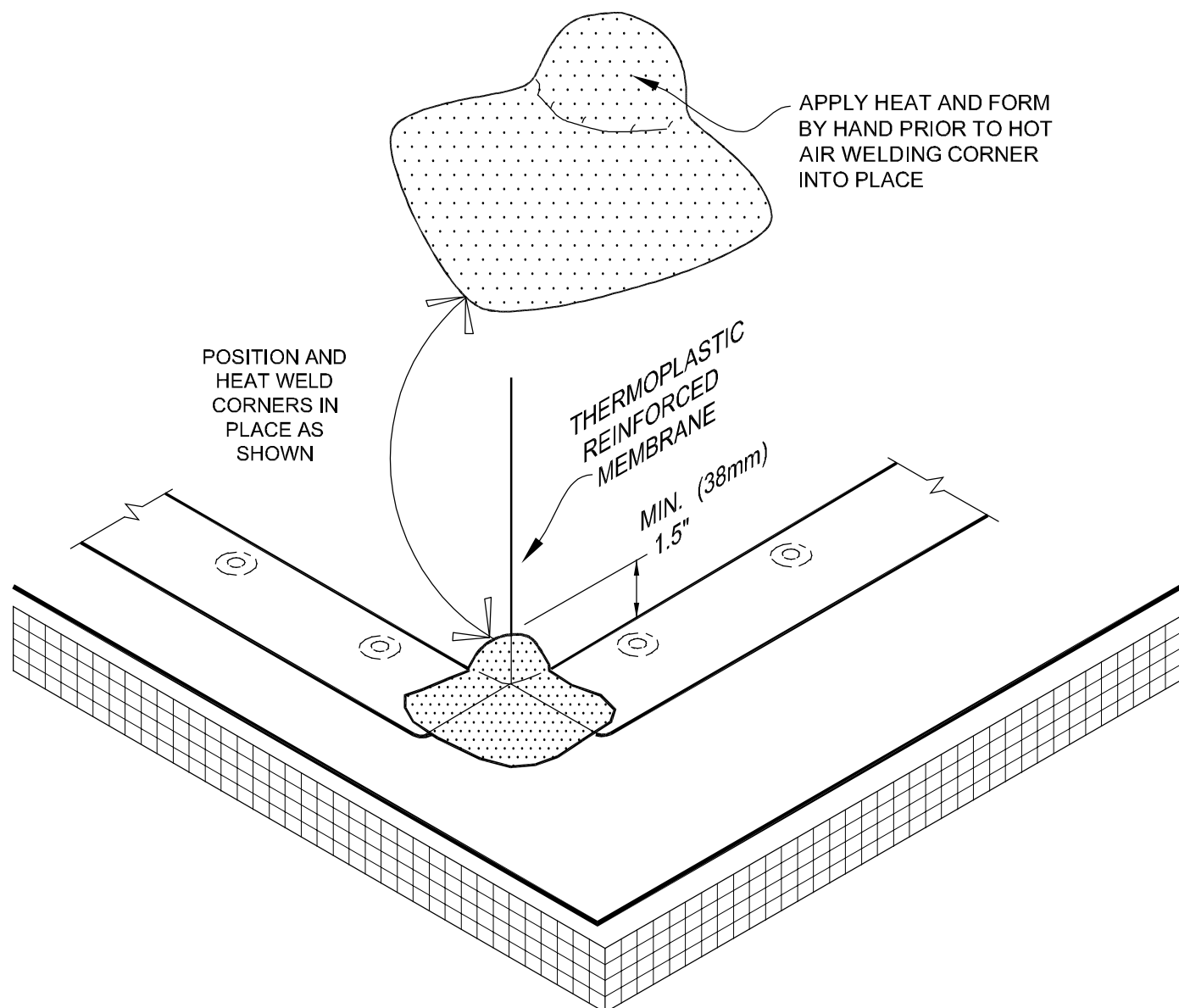
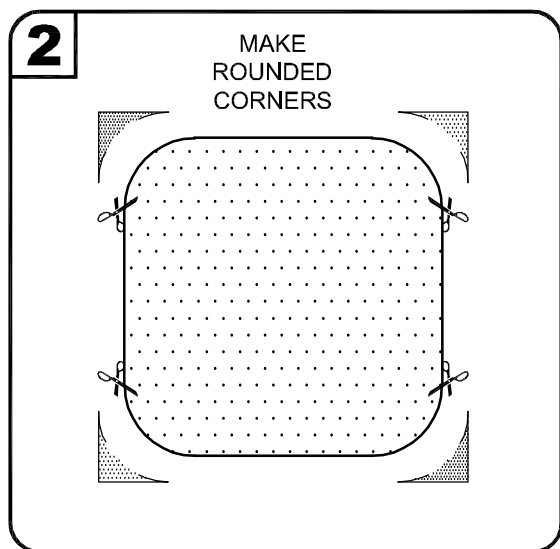
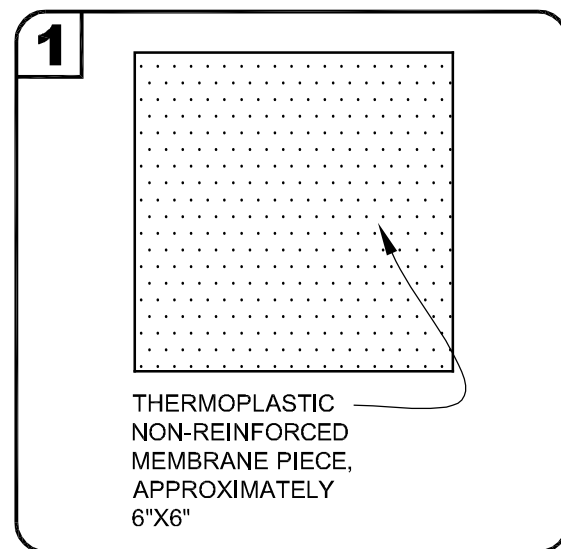
DIMENSIONS	mm	
(A)	6"	152
(B)	6"-9"	152-229



NOTE:  
WHEN USING 60 OR 80-MIL MEMBRANE, APPLY A 4 1/2" (114mm) DIAMETER "T-JOINT" COVER AT ALL FIELD SPLICE INTERSECTIONS.

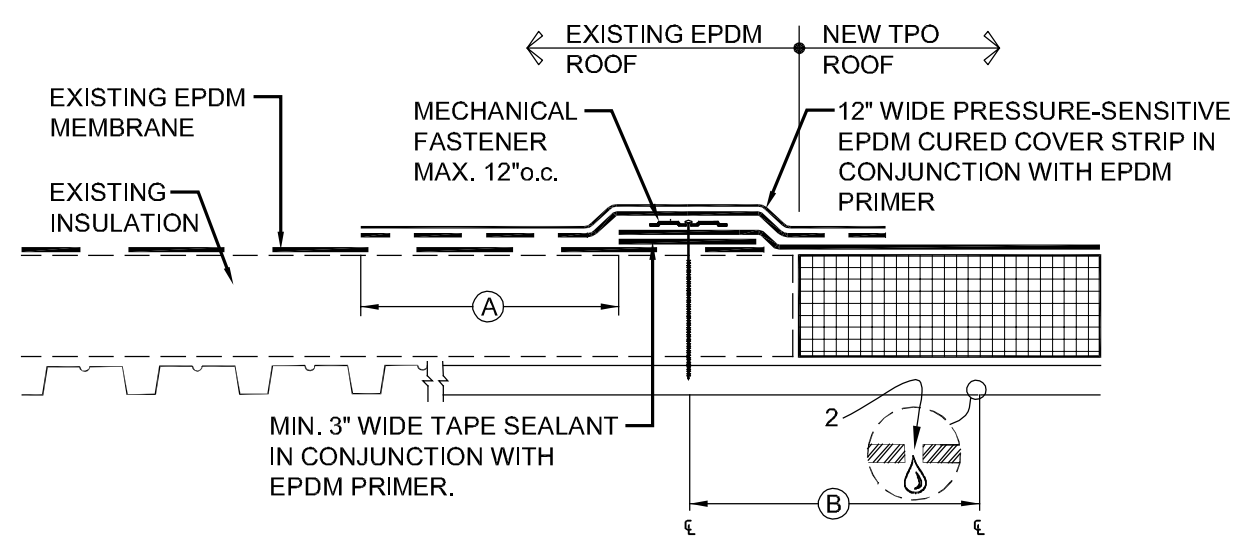
### 1 FIELD FABRICATED INSIDE CORNER FLASHING - BASE BID "A"

SCALE: 3" = 1'-0"



### 3 FIELD FABRICATED OUTSIDE CORNER FLASHING - BASE BID "A"

SCALE: 3" = 1'-0"



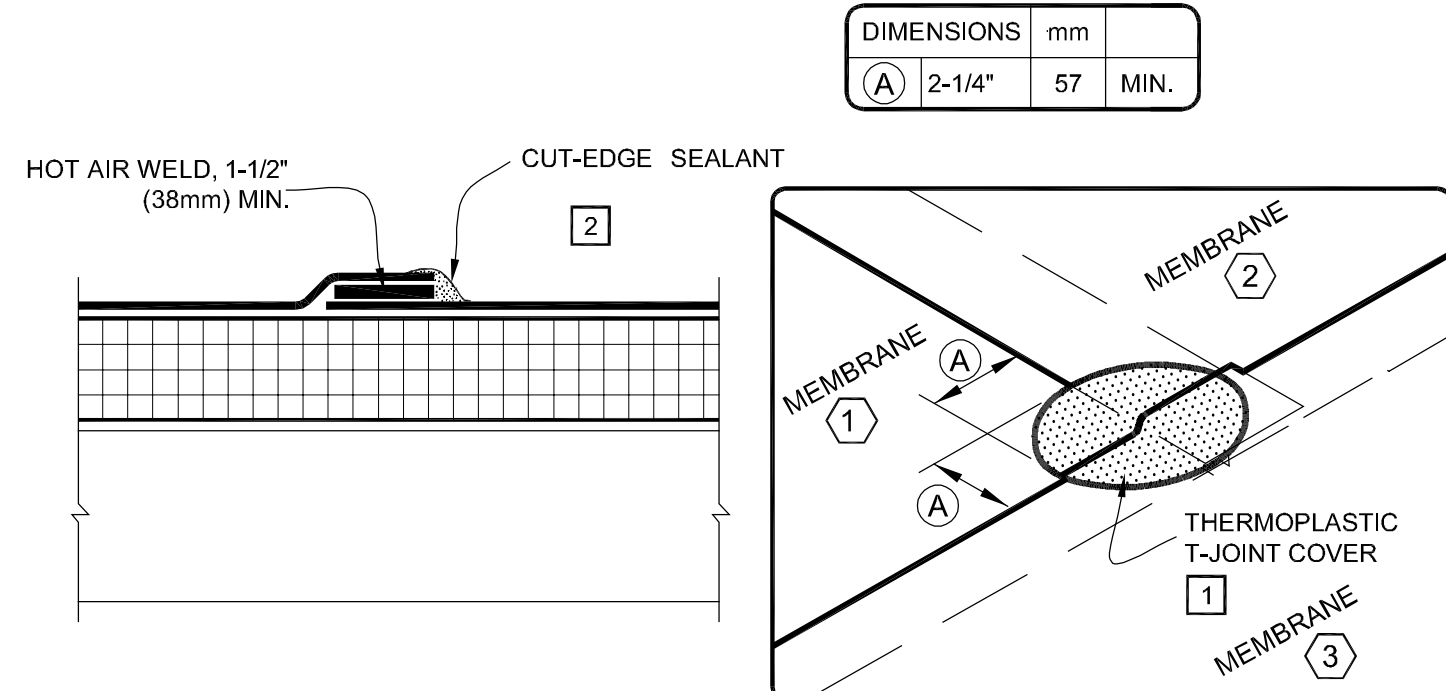
DIMENSIONS	mm
(A)	6"
(B)	6" MIN. 12" MAX.

NOTES:

- PRIOR TO SPLICING, CLEAN EXISTING EPDM MEMBRANE BY SCRUBBING THE SPLICE AREA WITH WEATHERED MEMBRANE CLEANER AND ALLOW TO DRY.
- DRILL A 3/8" (10mm) DIAMETER WEEP HOLE INTO THE BOTTOM FLUTES OF THE STEEL DECK ALONG THE PERIMETER OF THE TIE-IN 6" (152mm) MINIMUM TO 12" (305mm) MAXIMUM FROM THE SEAM FASTENING PLATE.
- ALL SPLICE INTERSECTIONS MUST BE OVERLAID WITH PRESSURE-SENSITIVE T-JOINT COVERS.

### 5 MEMBRANE TIE-IN DETAIL

SCALE: 3" = 1'-0"

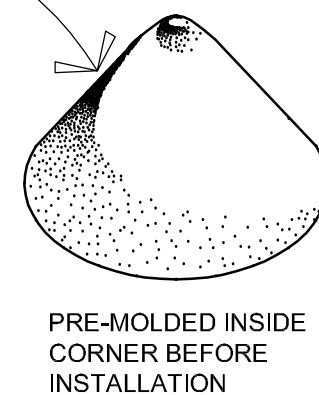
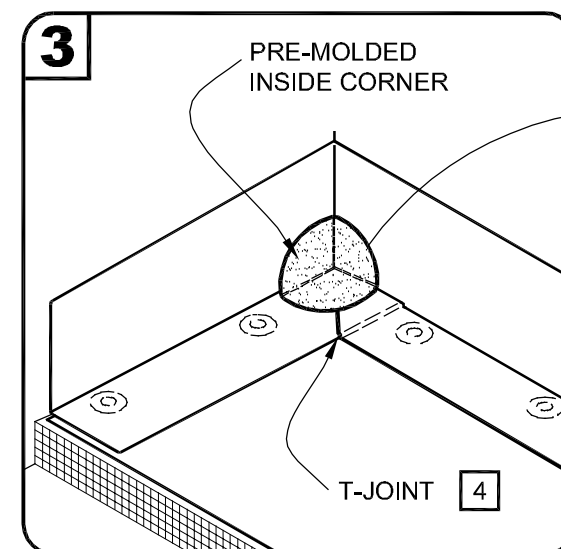
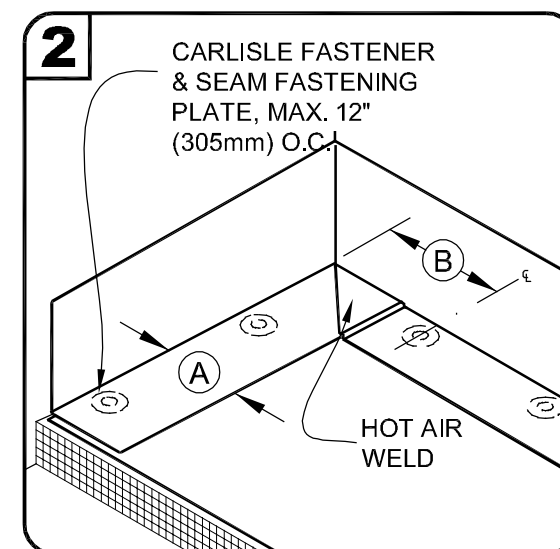
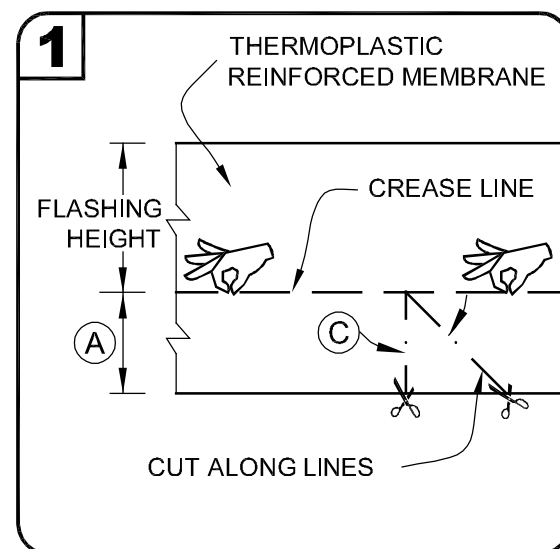


NOTES:

- WHEN USING 60 OR 80-MIL MEMBRANE, APPLY A 4-1/2" (114mm) DIAMETER "T-JOINT" COVER AT ALL FIELD SPLICE INTERSECTIONS.
- APPROXIMATELY 1/8" (3mm) DIAMETER BEAD OF CUT-EDGE SEALANT IS REQUIRED ON CUT EDGES OF REINFORCED TPO MEMBRANE AND RECOMMENDED ON CUT EDGES OF SURE-FLEX PVC MEMBRANE.

### 6 TPO MEMBRANE SPLICE DETAIL

SCALE: 3" = 1'-0"



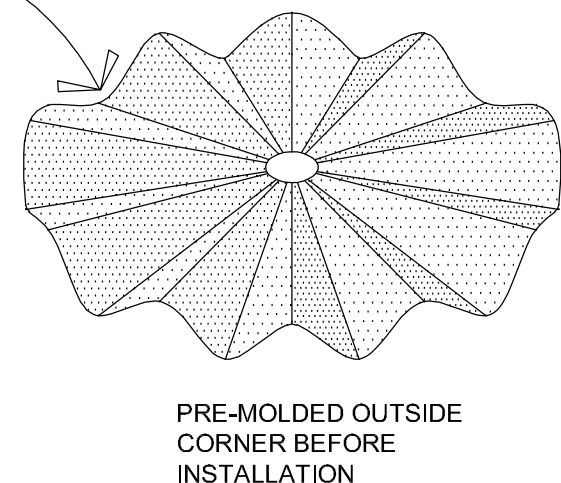
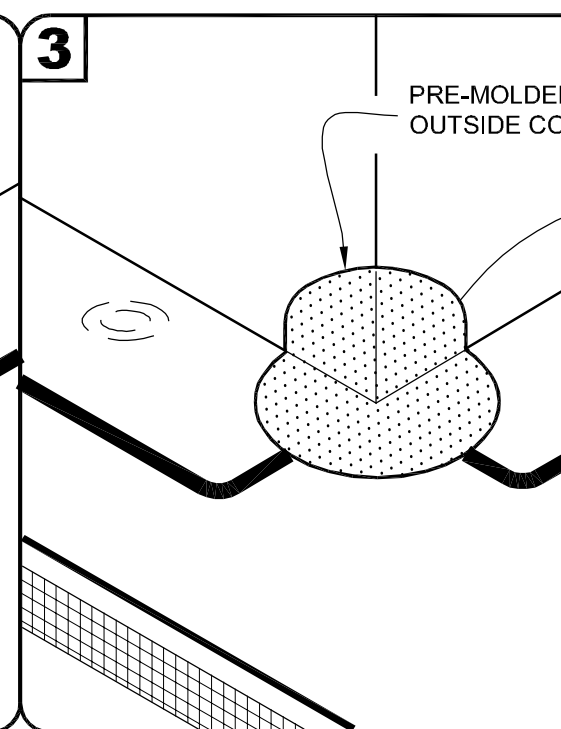
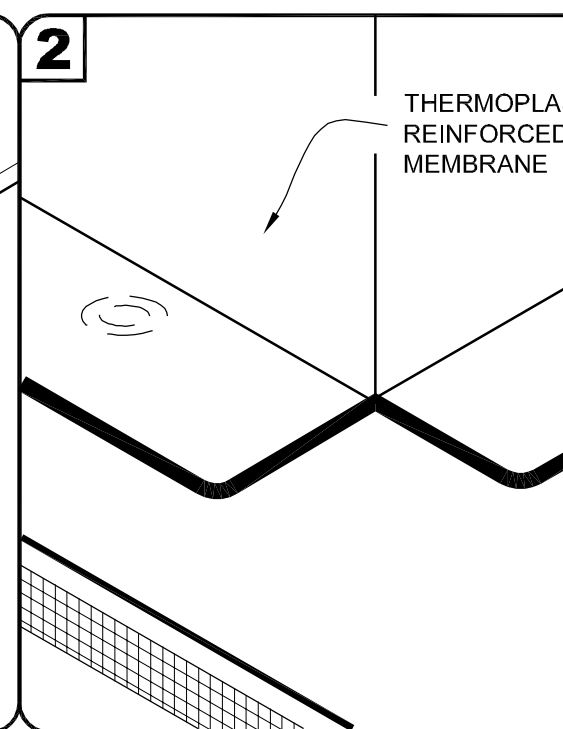
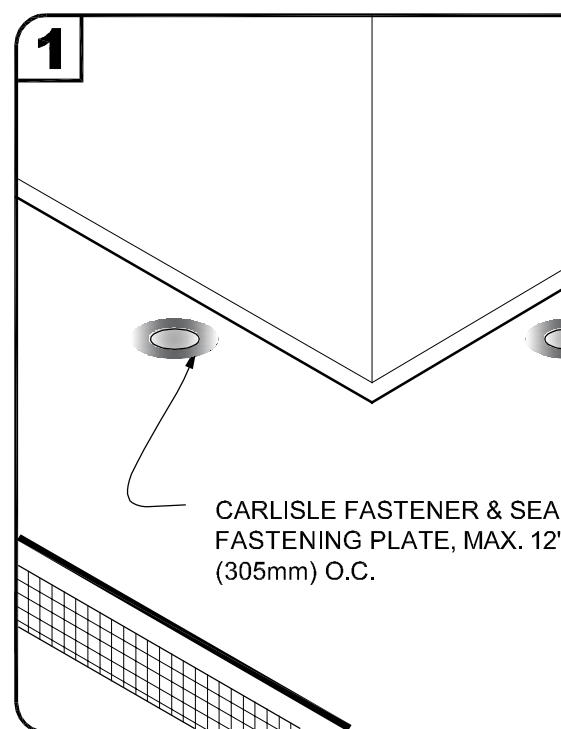
NOTES:

- POSITION FASTENING PLATES 6" TO 9" (152 TO 229mm) FROM THE CORNER AND 1/2" TO 1" (13 TO 25mm) FROM EDGE OF MEMBRANE.
- APPROXIMATELY 1/8" (3mm) DIAMETER BEAD OF CUT-EDGE SEALANT IS REQUIRED ON CUT EDGES OF REINFORCED TPO MEMBRANE AND RECOMMENDED ON CUT EDGES OF SURE-FLEX PVC MEMBRANE.
- REFER TO CARLISLE SPECIFICATIONS FOR ACCEPTABLE CARLISLE FASTENERS AND PLATES.
- WHEN USING 60 OR 80-MIL MEMBRANE, APPLY A 4-1/2" (114mm) DIAMETER "T-JOINT" COVER AT ALL FIELD SPLICE INTERSECTIONS.

DIMENSIONS	mm	
(A)	6"	152
(B)	6"-9"	152-229
(C)	45-DEGREES APPROX.	

### 2 PRE-MOLDED INSIDE CORNER FLASHING - ALTERNATE BID "A-1"

SCALE: 3" = 1'-0"

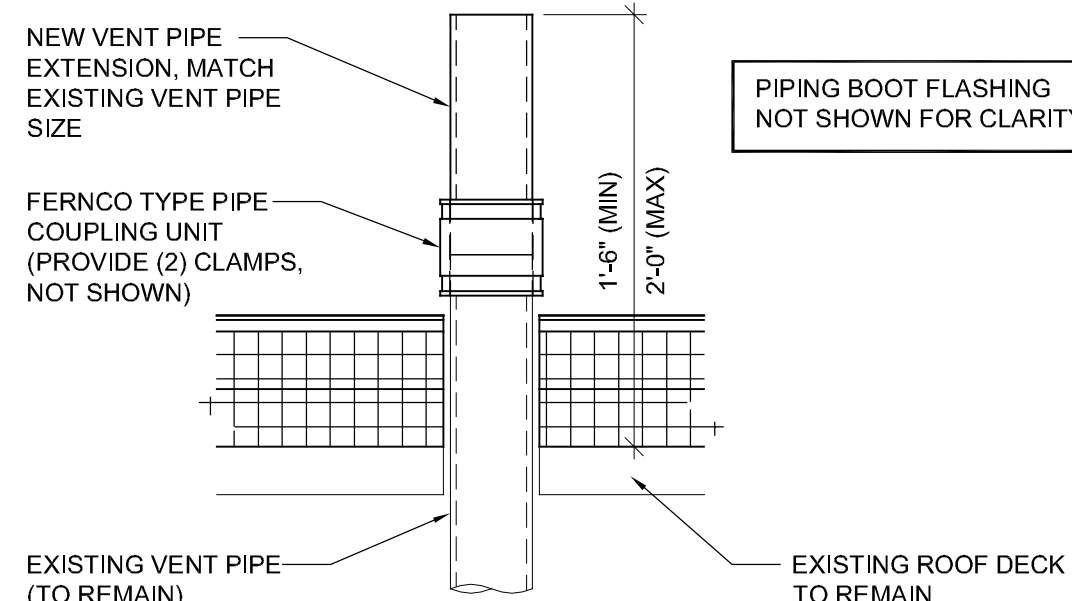


NOTES:

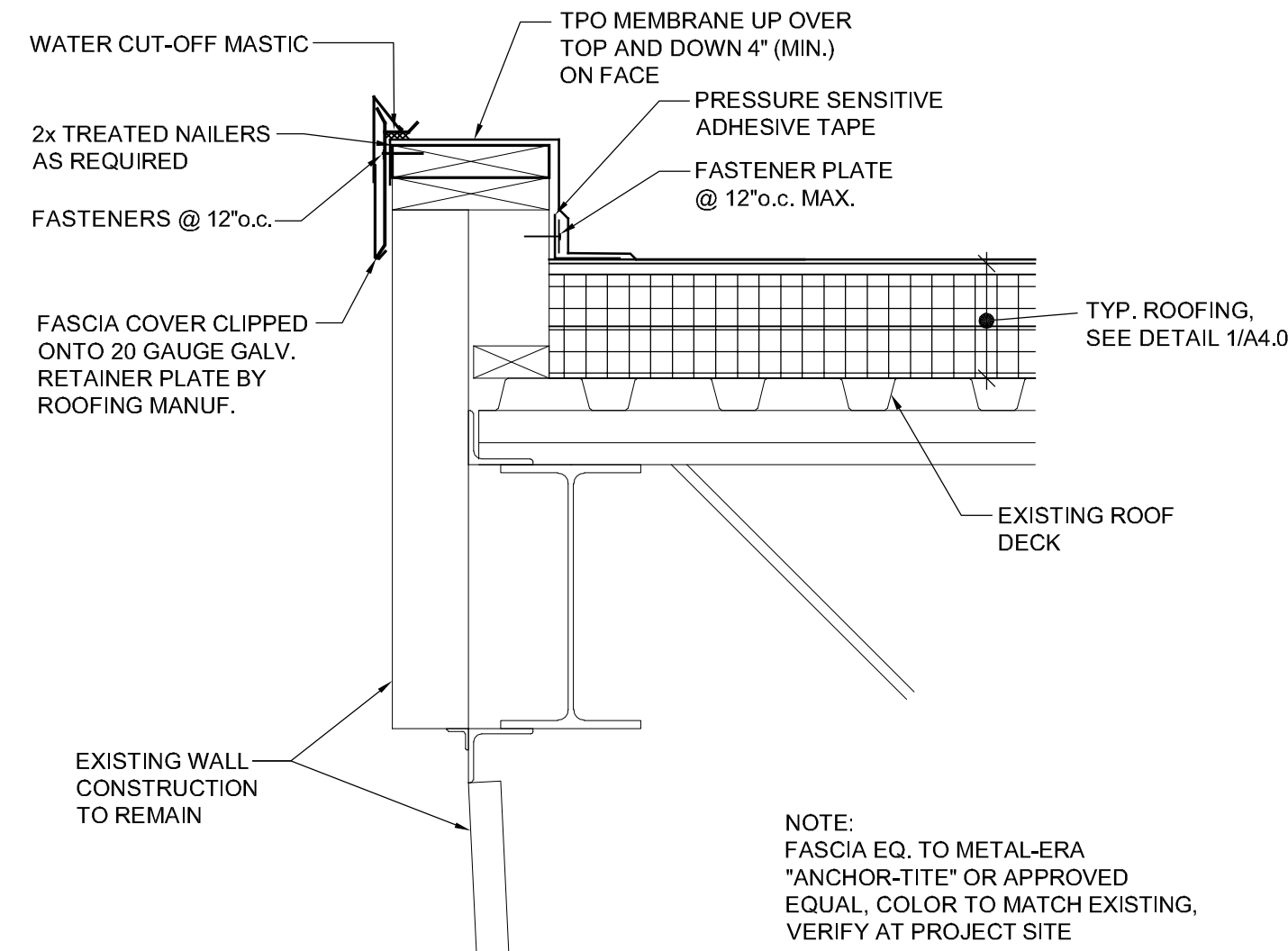
- POSITION FASTENING PLATES 6" (152mm) FROM THE CORNER AND 1/2" TO 1" (13 TO 25mm) FROM EDGE OF MEMBRANE.
- APPROXIMATELY 1/8" (3mm) DIAMETER BEAD OF CUT-EDGE SEALANT IS REQUIRED ON CUT EDGES OF REINFORCED TPO MEMBRANE AND RECOMMENDED ON CUT EDGES OF SURE-FLEX PVC MEMBRANE.
- REFER TO CARLISLE SPECIFICATIONS FOR ACCEPTABLE CARLISLE FASTENERS AND PLATES.

### 4 PRE-MOLDED OUTSIDE CORNER FLASHING - ALTERNATE BID "A-1"

SCALE: 3" = 1'-0"



PIPING BOOT FLASHING NOT SHOWN FOR CLARITY



NOTE: FASCIA EQ. TO METAL-ERA "ANCHOR-TITE" OR APPROVED EQUAL, COLOR TO MATCH EXISTING, VERIFY AT PROJECT SITE

### 7 PLUMBING VENT EXTENSION

SCALE: 1 1/2" = 1'-0"

### 8 ROOF FLASHING DETAIL

SCALE: 1 1/2" = 1'-0"

CURRENT DATE: 1/17/2019



LICENSE EXPIRES: 11/30/19

HEALTH LIFE SAFETY WORK:  
ROOF REPLACEMENT AT: BALDWIN ELEMENTARY SCHOOL  
**QUINCY PUBLIC SCHOOL DISTRICT #172**  
3000 MAINE STREET, QUINCY, ILLINOIS

CONSTRUCTION  
DOCUMENT  
PHASE

ISSUED FOR  
CONSTRUCTION

ISSUE DATE: 1/17/2019

REVISIONS

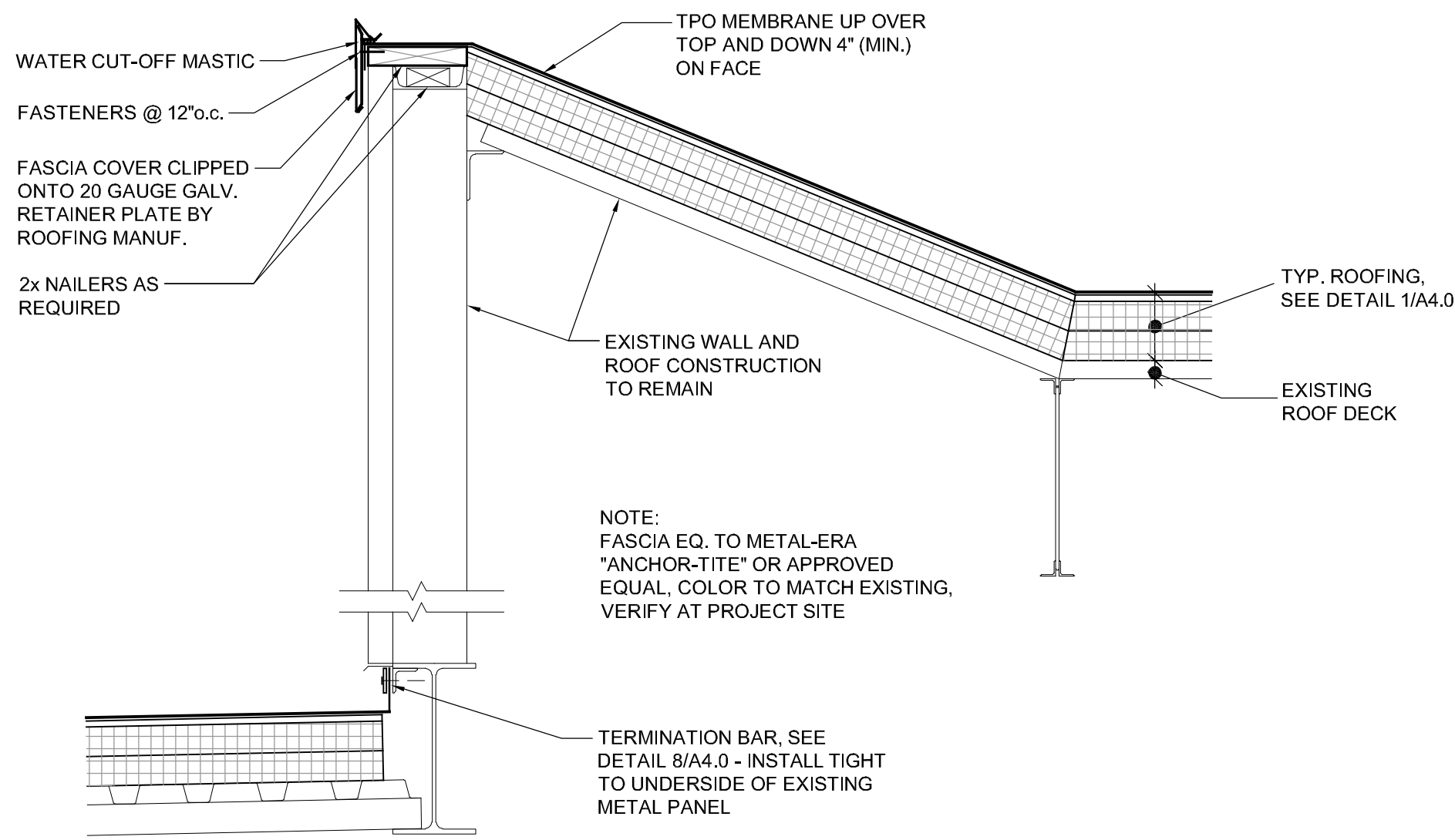
PROJECT NUMBER: 5774

ROOF  
DETAILS

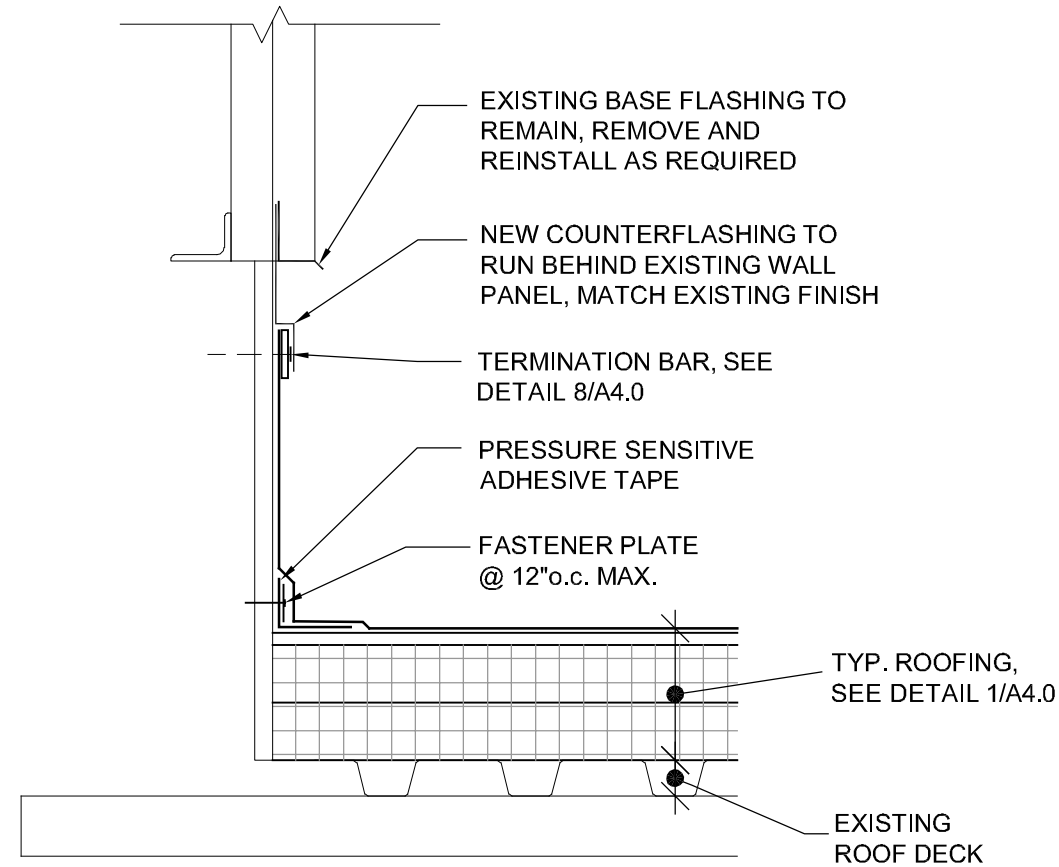
DWG. NO.

**A5.0**

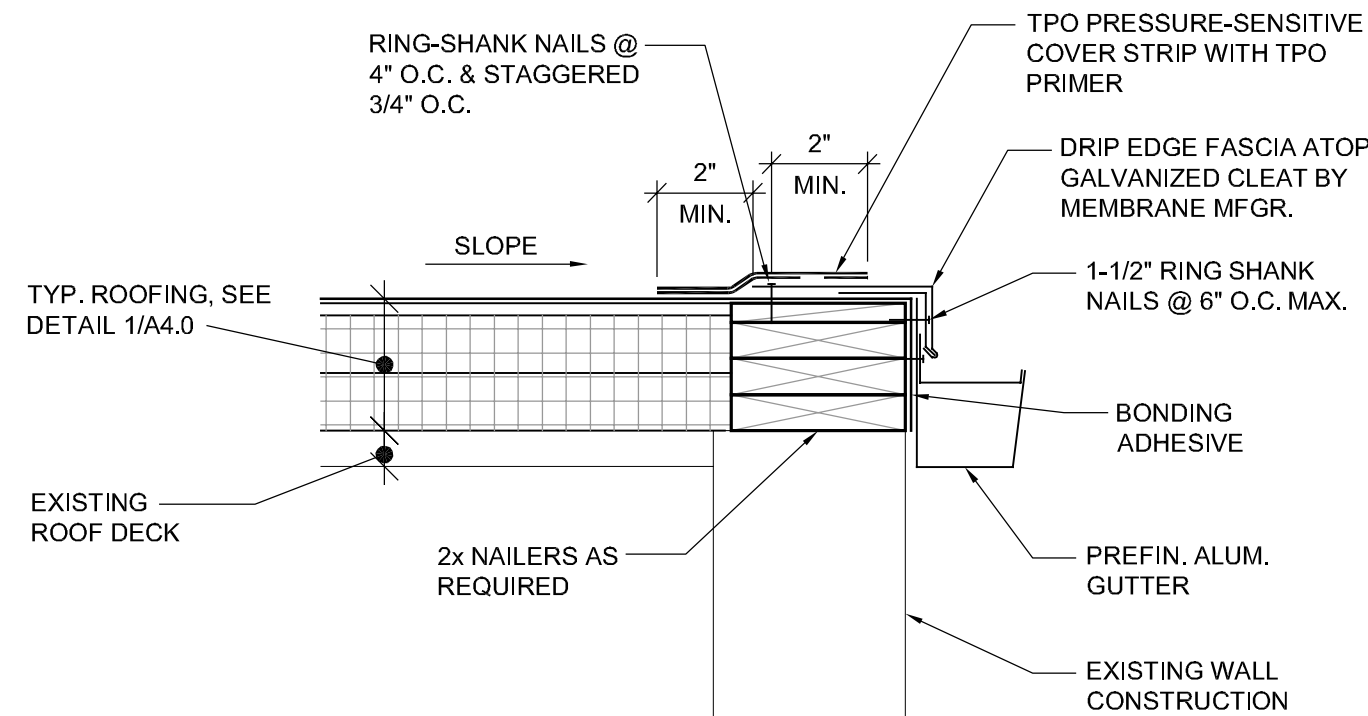




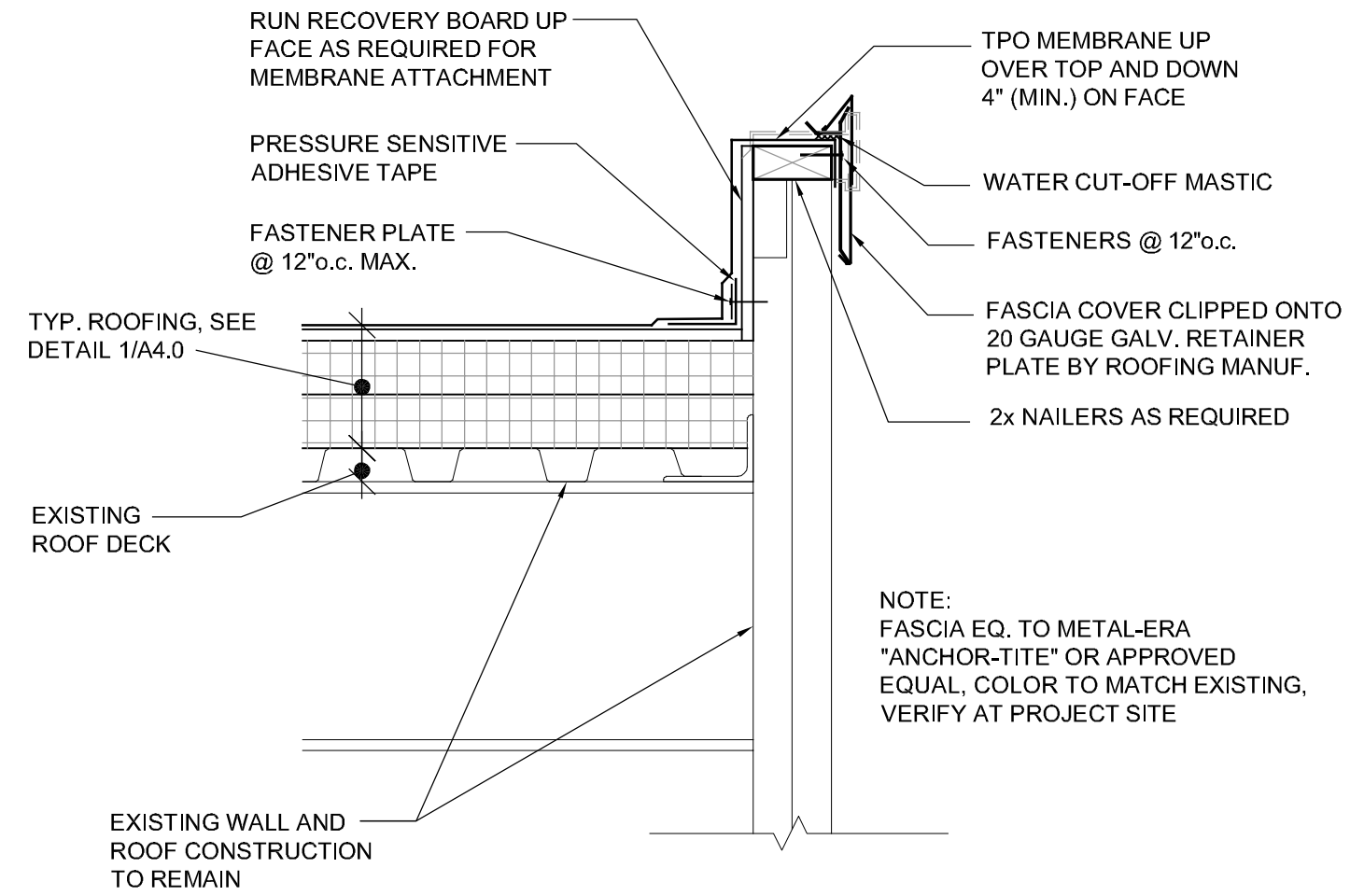
**1 ROOF FLASHING DETAIL**  
SCALE: 1" = 1'-0"



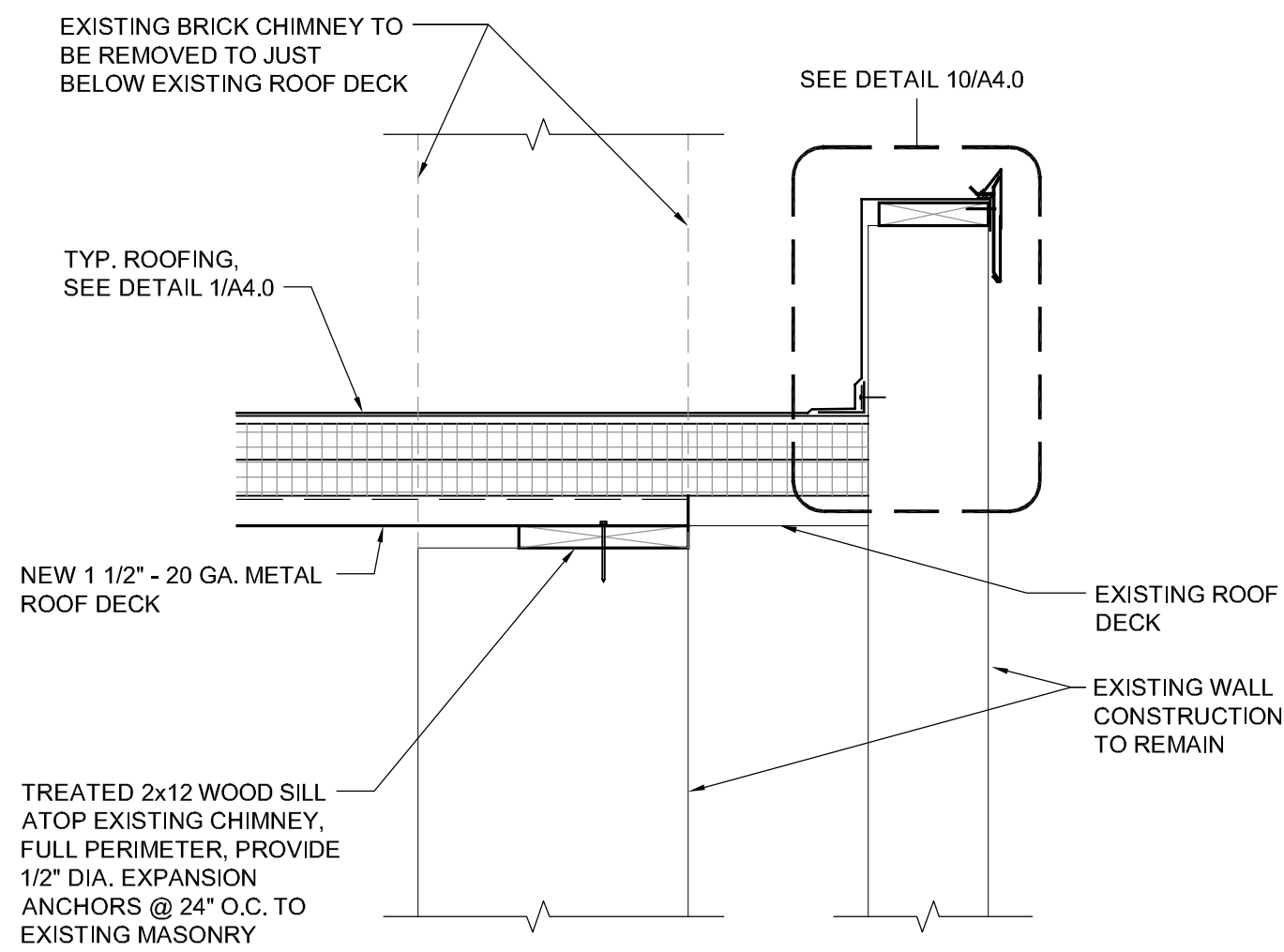
**4 ROOF FLASHING DETAIL**  
SCALE: 1 1/2" = 1'-0"



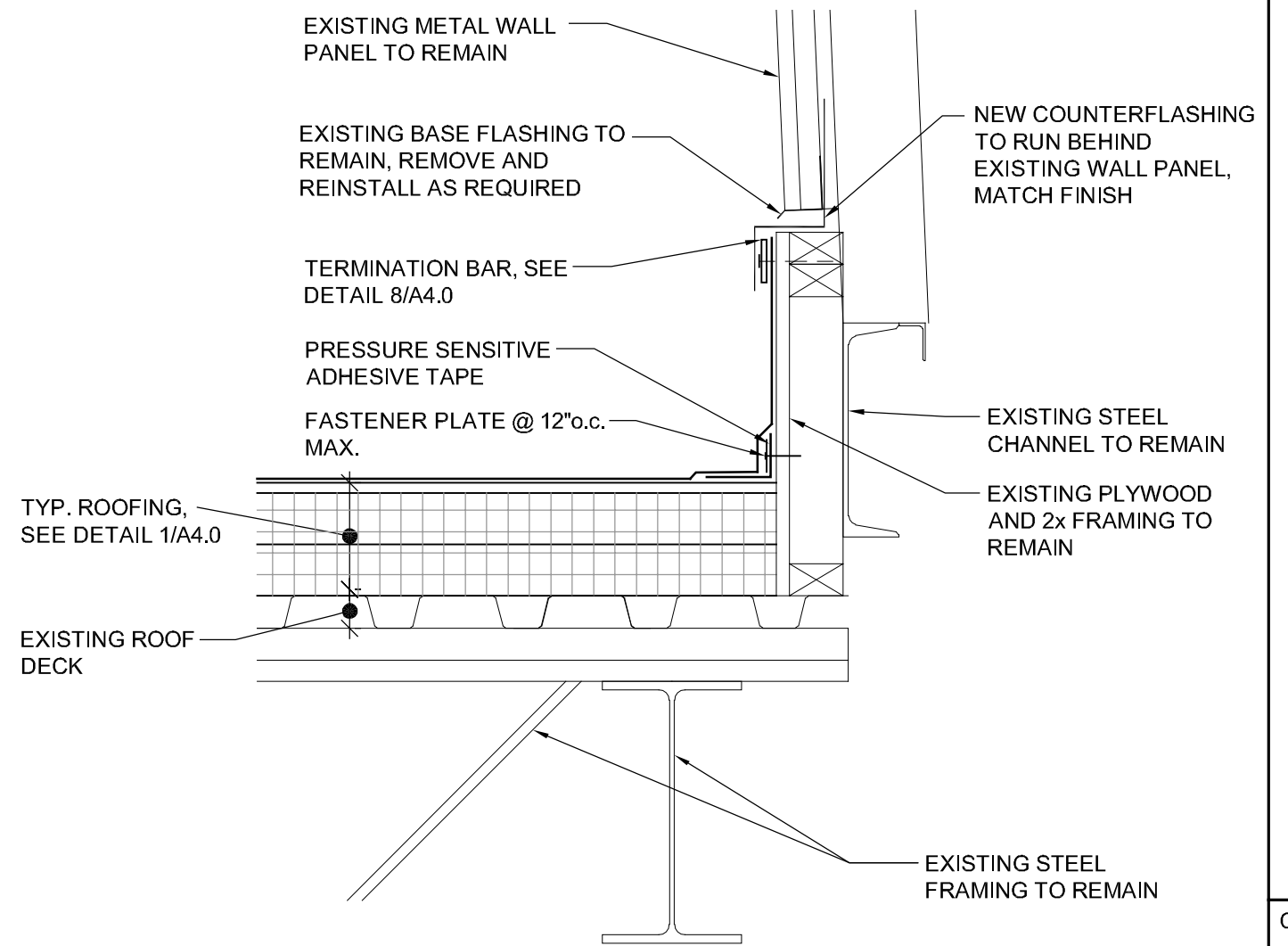
**5 ROOF GUTTER DETAIL**  
SCALE: 1 1/2" = 1'-0"



**2 ROOF FLASHING DETAIL**  
SCALE: 1 1/2" = 1'-0"



**ALTERNATE BID "A-2" CHIMNEY DETAIL**  
SCALE: 1" = 1'-0"



**3 FLASHING DETAIL**  
SCALE: 1 1/2" = 1'-0"

NO.	DESCRIPTION	DATE